


Anti-alpha 1 Sodium Potassium ATPase (phospho Y10) antibody [EPR2375(2)] ab124677

重组 RabMAb

1 References 2 图像

概述

产品名称	Anti-alpha 1 Sodium Potassium ATPase (phospho Y10)抗体[EPR2375(2)]
描述	兔单克隆抗体[EPR2375(2)] to alpha 1 Sodium Potassium ATPase (phospho Y10)
宿主	Rabbit
经测试应用	适用于: WB 不适用于: Flow Cyt, ICC/IF or IHC-P
种属反应性	与反应: Human 预测可用于: Mouse, Rat 
免疫原	Synthetic peptide. This information is proprietary to Abcam and/or its suppliers.
阳性对照	HeLa cell lysate, treated with Pervanadate.
常规说明	This product is a recombinant monoclonal antibody, which offers several advantages including: <ul style="list-style-type: none"> - High batch-to-batch consistency and reproducibility - Improved sensitivity and specificity - Long-term security of supply - Animal-free production For more information see here . Our RabMAb [®] technology is a patented hybridoma-based technology for making rabbit monoclonal antibodies. For details on our patents, please refer to RabMAb[®] patents .

性能

形式	Liquid
存放说明	Shipped at 4°C. Store at -20°C. Stable for 12 months at -20°C.
存储溶液	pH: 7.2 Preservative: 0.05% Sodium azide Constituents: 40% Glycerol (glycerin, glycerine), 9.85% Tris glycine, 50% Tissue culture supernatant
纯度	Protein A purified
克隆	单克隆

克隆编号 EPR2375(2)

同种型 IgG

应用

The Abpromise guarantee **Abpromise™**承诺保证使用ab124677于以下的经测试应用

“应用说明”部分 下显示的仅为推荐的起始稀释度;实际最佳的稀释度/浓度应由使用者检定。

应用	Ab评论	说明
WB		1/10000 - 1/50000. Detects a band of approximately 100 kDa (predicted molecular weight: 113 kDa).

应用说明 Is unsuitable for Flow Cyt, ICC/IF or IHC-P.

靶标

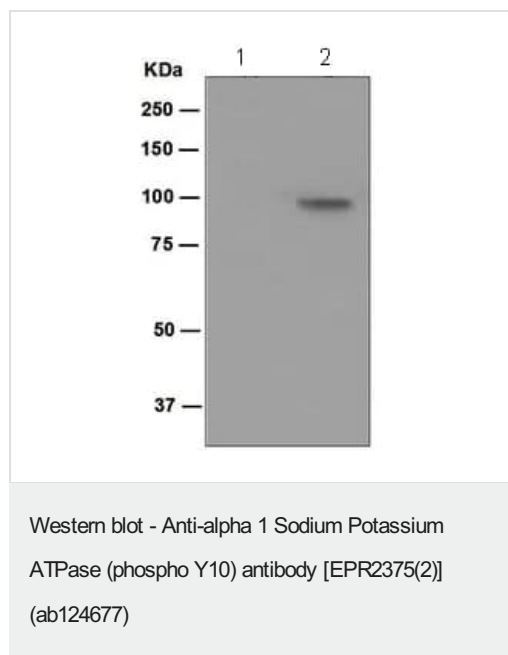
功能 This is the catalytic component of the active enzyme, which catalyzes the hydrolysis of ATP coupled with the exchange of sodium and potassium ions across the plasma membrane. This action creates the electrochemical gradient of sodium and potassium ions, providing the energy for active transport of various nutrients.

序列相似性 Belongs to the cation transport ATPase (P-type) (TC 3.A.3) family. Type IIc subfamily.

翻译后修饰 Phosphorylation on Tyr-10 modulates pumping activity.

细胞定位 Cell membrane. Melanosome. Identified by mass spectrometry in melanosome fractions from stage I to stage IV.

图片



All lanes : Anti-alpha 1 Sodium Potassium ATPase (phospho Y10) antibody [EPR2375(2)] (ab124677) at 1/10000 dilution

Lane 1 : HeLa cell lysate

Lane 2 : HeLa cell lysate, treated with Pervanadate

Lysates/proteins at 10 µg per lane.

Secondary

All lanes : Goat anti-Rabbit HRP at 1/2000 dilution

Predicted band size: 113 kDa

Observed band size: 100 kDa

Why choose a recombinant antibody?



Research with confidence
Consistent and reproducible results



Long-term and scalable supply
Recombinant technology



Success from the first experiment
Confirmed specificity



Ethical standards compliant
Animal-free production

Anti-alpha 1 Sodium Potassium ATPase (phospho Y10) antibody [EPR2375(2)] (ab124677)

Please note: All products are "FOR RESEARCH USE ONLY. NOT FOR USE IN DIAGNOSTIC PROCEDURES"

Our Abpromise to you: Quality guaranteed and expert technical support

- Replacement or refund for products not performing as stated on the datasheet
- Valid for 12 months from date of delivery
- Response to your inquiry within 24 hours
- We provide support in Chinese, English, French, German, Japanese and Spanish
- Extensive multi-media technical resources to help you
- We investigate all quality concerns to ensure our products perform to the highest standards

If the product does not perform as described on this datasheet, we will offer a refund or replacement. For full details of the Abpromise, please visit <https://www.abcam.cn/abpromise> or contact our technical team.

Terms and conditions

- Guarantee only valid for products bought direct from Abcam or one of our authorized distributors