

Anti-alpha 1 Fetoprotein antibody [1G7] ab54745

1 Abreviews 3 References 4 图像

| | |
|-------|--------------------------------------------------------------------------------------------------------------------------------------------------------------------------------------------------------------------------------------------------------------------------------------------------------------------------------------------------------------------------------------------------------------------------------------------------------------------------------------------------------------------------------------------------------------------------------------------------------------------------------------------------------------------------------------------------------------------------------------------------------------------------------------------------------------------------------------------------------------------------|
| 概述 | |
| 产品名称 | Anti-alpha 1 Fetoprotein抗体[1G7] |
| 描述 | 小鼠单克隆抗体[1G7] to alpha 1 Fetoprotein |
| 宿主 | Mouse |
| 经测试应用 | 适用于: WB, IHC-P, Sandwich ELISA, ICC/IF |
| 种属反应性 | 与反应: Human |
| 免疫原 | Recombinant fragment, corresponding to amino acids 500-610 of Human alpha 1 Fetoprotein |
| 常规说明 | <p>This product was changed from ascites to tissue culture supernatant on 13 May 2019. Please note that the dilutions may need to be adjusted accordingly. If you have any questions, please do not hesitate to contact our scientific support team.</p> <p>The Life Science industry has been in the grips of a reproducibility crisis for a number of years. Abcam is leading the way in addressing this with our range of recombinant monoclonal antibodies and knockout edited cell lines for gold-standard validation. Please check that this product meets your needs before purchasing.</p> <p>If you have any questions, special requirements or concerns, please send us an inquiry and/or contact our Support team ahead of purchase. Recommended alternatives for this product can be found below, along with publications, customer reviews and Q&As</p> |
| 性能 | |
| 形式 | Liquid |
| 存放说明 | Shipped at 4°C. Upon delivery aliquot and store at -20°C or -80°C. Avoid repeated freeze / thaw cycles. |
| 存储溶液 | pH: 7.40 |
| 纯化说明 | Purified from TCS. |
| 克隆 | 单克隆 |
| 克隆编号 | 1G7 |
| 同种型 | IgG |
| 轻链类型 | kappa |

The Abpromise guarantee **Abpromise™**承诺保证使用ab54745于以下的经测试应用

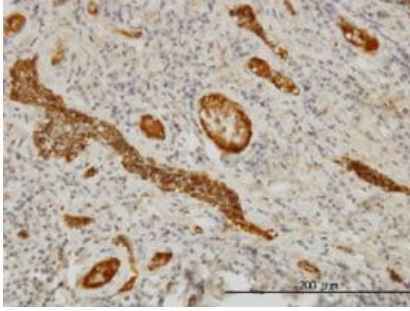
“应用说明”部分 下显示的仅为推荐的起始稀释度;实际最佳的稀释度/浓度应由使用者检定。

| 应用 | Ab评论 | 说明 |
|----------------|------|------------------------------------------------------------------------------------------------------------------------------------------|
| WB | | Use at an assay dependent concentration. Predicted molecular weight: 69 kDa. |
| IHC-P | | Use at an assay dependent concentration. |
| Sandwich ELISA | | Use at an assay dependent concentration. For sandwich ELISA, use this antibody as Capture at 1 µg/ml with ab8201 as Detection. |
| ICC/IF | | Use at an assay dependent concentration. |

靶标

| | |
|-------|--------------------------------------------------------------------------------------------------------------------------------------------------------------------------------------------------------------------------------------------------------------------------------------------------------------------|
| 功能 | Binds copper, nickel, and fatty acids as well as, and bilirubin less well than, serum albumin. Only a small percentage (less than 2%) of the human AFP shows estrogen-binding properties. |
| 组织特异性 | Plasma. Synthesized by the fetal liver and yolk sac. |
| 序列相似性 | Belongs to the ALB/AFP/VDB family. Contains 3 albumin domains. |
| 发展阶段 | Occurs in the plasma of fetuses more than 4 weeks old, reaches the highest levels during the 12th-16th week of gestation, and drops to trace amounts after birth. The serum level in adults is usually less than 40 ng/ml. AFP occurs also at high levels in the plasma and ascitic fluid of adults with hepatoma. |
| 翻译后修饰 | Independent studies suggest heterogeneity of the N-terminal sequence of the mature protein and of the cleavage site of the signal sequence. Sulfated. |
| 细胞定位 | Secreted. |

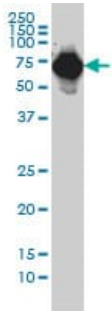
图片



Immunohistochemistry (Formalin/PFA-fixed paraffin-embedded sections) - Anti-alpha 1 Fetoprotein antibody [1G7] (ab54745)

alpha 1 Fetoprotein antibody (ab54745) used in immunohistochemistry at 3ug/ml on formalin fixed and paraffin embedded human tonsil.

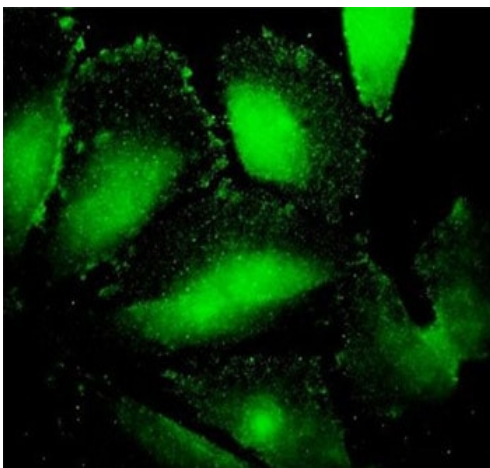
This image was generated using the ascites version of the product.



Western blot - Anti-alpha 1 Fetoprotein antibody [1G7] (ab54745)

alpha 1 Fetoprotein antibody (ab54745) at 1ug/lane + HepG2 cell lysate at 25ug/lane.

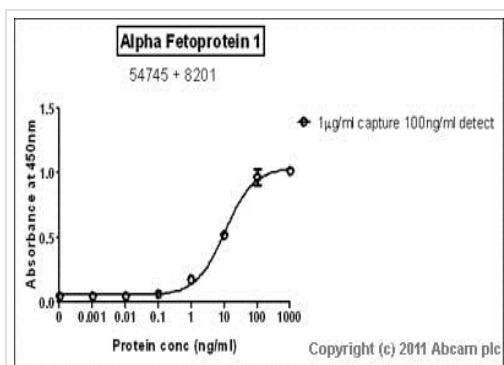
This image was generated using the ascites version of the product.



Immunocytochemistry/ Immunofluorescence - Anti-alpha 1 Fetoprotein antibody [1G7] (ab54745)

ab54745 at 10 ug/ml staining alpha Fetoprotein in human HeLa cells by Immunocytochemistry / Immunofluorescence.

This image was generated using the ascites version of the product.



Sandwich ELISA - Anti-alpha 1 Fetoprotein antibody
[1G7] (ab54745)

Standard Curve for Alpha 1 Fetoprotein dilution range 1pg/ml to 1ug/ml using Capture Antibody Mouse monoclonal to alpha 1 Fetoprotein (ab54745) at 1ug/ml and Detector Antibody Rabbit polyclonal to alpha 1 Fetoprotein (**ab8201**) at 0.1ug/ml

This image was generated using the ascites version of the product.

Please note: All products are "FOR RESEARCH USE ONLY. NOT FOR USE IN DIAGNOSTIC PROCEDURES"

Our Abpromise to you: Quality guaranteed and expert technical support

- Replacement or refund for products not performing as stated on the datasheet
- Valid for 12 months from date of delivery
- Response to your inquiry within 24 hours
- We provide support in Chinese, English, French, German, Japanese and Spanish
- Extensive multi-media technical resources to help you
- We investigate all quality concerns to ensure our products perform to the highest standards

If the product does not perform as described on this datasheet, we will offer a refund or replacement. For full details of the Abpromise, please visit <https://www.abcam.cn/abpromise> or contact our technical team.

Terms and conditions

- Guarantee only valid for products bought direct from Abcam or one of our authorized distributors