

Alkaline Phosphatase Anti-HA tag antibody [16B12] ab81656

1 图像

概述

产品名称	Alkaline Phosphatase Anti-HA tag抗体[16B12]
描述	Alkaline Phosphatase小鼠单克隆抗体[16B12] to HA tag
宿主	Mouse
偶联物	Alkaline Phosphatase
经测试应用	适用于: WB
种属反应性	与反应: Species independent
免疫原	Synthetic peptide: CYPYDVPDYASL

 [Run BLAST with](#)

 [Run BLAST with](#)

表位	The HA.11 antibody recognizes the influenza hemagglutinin epitope (YPYDVPDYA) which has been used extensively as a general epitope tag in expression vectors. The HA.11 antibody recognizes HA epitopes located in the middle of protein sequences as well as at the N- or C-terminus.
----	--

常规说明	<p>The Life Science industry has been in the grips of a reproducibility crisis for a number of years. Abcam is leading the way in addressing this with our range of recombinant monoclonal antibodies and knockout edited cell lines for gold-standard validation. Please check that this product meets your needs before purchasing.</p> <p>If you have any questions, special requirements or concerns, please send us an inquiry and/or contact our Support team ahead of purchase. Recommended alternatives for this product can be found below, along with publications, customer reviews and Q&As</p>
------	---

性能

形式	Liquid
存放说明	Shipped at 4°C. Store at +4°C short term (1-2 weeks). Store at -20°C or -80°C. Avoid freeze / thaw cycle.
存储溶液	pH: 7.20 Preservative: 0.013% Sodium azide Constituents: 0.87% Sodium chloride, 0.3025% Tris
纯度	Size exclusion
克隆	单克隆

克隆编号	16B12
同种型	IgG1

应用

The Abpromise guarantee **Abpromise™**承诺保证使用ab81656于以下的经测试应用

“应用说明”部分 下显示的仅为推荐的起始稀释度;实际最佳的稀释度/浓度应由使用者检定。

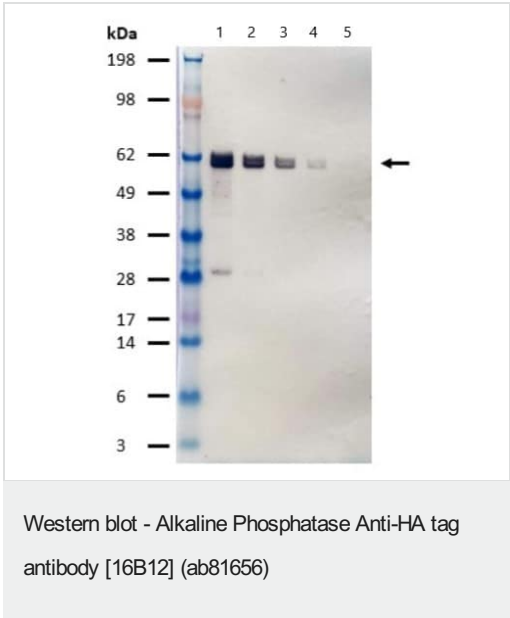
应用	Ab评论	说明
WB		1/5000.

靶标

相关性

Human influenza hemagglutinin (HA) is a surface glycoprotein required for the infectivity of the human virus. The HA tag is derived from the HA molecule corresponding to amino acids 98-106 has been extensively used as a general epitope tag in expression vectors. Many recombinant proteins have been engineered to express the HA tag, which does not appear to interfere with the bioactivity or the biodistribution of the recombinant protein. This tag facilitates the detection, isolation, and purification of the proteins.

图片



All lanes : Alkaline Phosphatase Anti-HA tag antibody [16B12] (ab81656) at 1/10000 dilution

- Lane 1 :** 60 kDa HA-tagged protein at 0.3 µg
- Lane 2 :** 60 kDa HA-tagged protein at 0.01 µg
- Lane 3 :** 60 kDa HA-tagged protein at 0.03 µg
- Lane 4 :** 60 kDa HA-tagged protein at 0.001 µg
- Lane 5 :** 60 kDa HA-tagged protein at 0.003 µg

Imaged using stabilized Alkaline Phosphatase substrate.

Please note: All products are "FOR RESEARCH USE ONLY. NOT FOR USE IN DIAGNOSTIC PROCEDURES"

Our Abpromise to you: Quality guaranteed and expert technical support

- Replacement or refund for products not performing as stated on the datasheet

- Valid for 12 months from date of delivery
- Response to your inquiry within 24 hours
- We provide support in Chinese, English, French, German, Japanese and Spanish
- Extensive multi-media technical resources to help you
- We investigate all quality concerns to ensure our products perform to the highest standards

If the product does not perform as described on this datasheet, we will offer a refund or replacement. For full details of the Abpromise, please visit <https://www.abcam.cn/abpromise> or contact our technical team.

Terms and conditions

- Guarantee only valid for products bought direct from Abcam or one of our authorized distributors