


# Alexa Fluor® 647 Anti-Cytokeratin 19 antibody [EP1580Y] ab192980

敲除验证 重组 RabMAb

★★★★★ [2 Abreviews](#) [2 References](#) [4 图像](#)

### 概述

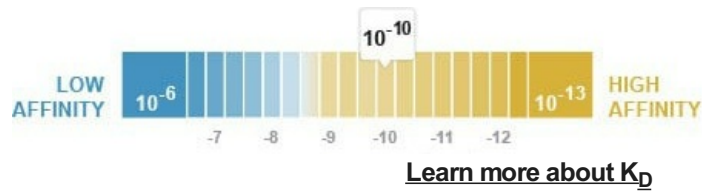
产品名称	Alexa Fluor® 647荧光Anti-Cytokeratin 19抗体[EP1580Y]
描述	Alexa Fluor® 647荧光兔单克隆抗体[EP1580Y] to Cytokeratin 19
宿主	Rabbit
偶联物	Alexa Fluor® 647. Ex: 652nm, Em: 668nm
经测试应用	适用于: ICC/IF, Flow Cyt (Intra)
种属反应性	与反应: Human 预测可用于: Mouse 
免疫原	Synthetic peptide. This information is proprietary to Abcam and/or its suppliers.
阳性对照	ICC/IF - HeLa, Flow Cyt (intra) - HeLa ICC/IF KO: MCF7 cells (MCF7-KRT19 KO used as a negative cell line).
常规说明	<p>Our RabMAb® technology is a patented hybridoma-based technology for making rabbit monoclonal antibodies. For details on our patents, please refer to <a href="#">RabMAb® patents</a>.</p> <p>Alexa Fluor® is a registered trademark of Molecular Probes, Inc, a Thermo Fisher Scientific Company. The Alexa Fluor® dye included in this product is provided under an intellectual property license from Life Technologies Corporation. As this product contains the Alexa Fluor® dye, the purchase of this product conveys to the buyer the non-transferable right to use the purchased product and components of the product only in research conducted by the buyer (whether the buyer is an academic or for-profit entity). As this product contains the Alexa Fluor® dye the sale of this product is expressly conditioned on the buyer not using the product or its components, or any materials made using the product or its components, in any activity to generate revenue, which may include, but is not limited to use of the product or its components: (i) in manufacturing; (ii) to provide a service, information, or data in return for payment (iii) for therapeutic, diagnostic or prophylactic purposes; or (iv) for resale, regardless of whether they are sold for use in research. For information on purchasing a license to this product for purposes other than research, contact Life Technologies Corporation, 5781 Van Allen Way, Carlsbad, CA 92008 USA or <a href="mailto:outlicensing@thermofisher.com">outlicensing@thermofisher.com</a>.</p>

### 性能

**形式** Liquid

**存放说明** Shipped at 4°C. Store at +4°C short term (1-2 weeks). Upon delivery aliquot. Store at -20°C. Avoid freeze / thaw cycle. Stable for 12 months at -20°C. Store In the Dark.

**解离常数 (K<sub>D</sub>)** K<sub>D</sub> = 3.70 x 10<sup>-10</sup> M



**存储溶液** pH: 7.40  
Preservative: 0.02% Sodium azide  
Constituents: 30% Glycerol (glycerin, glycerine), 1% BSA, PBS

**纯度** Protein A purified

**克隆** 单克隆

**克隆编号** EP1580Y

**同种型** IgG

## 应用

**The Abpromise guarantee** **Abpromise™** 承诺保证使用 ab192980 于以下的经测试应用

“应用说明”部分 下显示的仅为推荐的起始稀释度; 实际最佳的稀释度/浓度应由使用者检定。

应用	Ab评论	说明
ICC/IF		1/50. Signal can be observed in cells fixed with either methanol or paraformaldehyde.
Flow Cyt (Intra)		Use 0.2µl for 10 <sup>6</sup> cells. <b>ab199093</b> - Rabbit monoclonal IgG (Alexa Fluor® 647), is suitable for use as an isotype control with this antibody.

## 靶标

**功能** Involved in the organization of myofibers. Together with KRT8, helps to link the contractile apparatus to dystrophin at the costameres of striated muscle.

**组织特异性** Expressed in a defined zone of basal keratinocytes in the deep outer root sheath of hair follicles. Also observed in sweat gland and mammary gland ductal and secretory cells, bile ducts, gastrointestinal tract, bladder urothelium, oral epithelia, esophagus, ectocervical epithelium (at protein level). Expressed in epidermal basal cells, in nipple epidermis and a defined region of the hair follicle. Also seen in a subset of vascular wall cells in both the veins and artery of human umbilical cord, and in umbilical cord vascular smooth muscle. Observed in muscle fibers accumulating in the costameres of myoplasm at the sarcolemma in structures that contain dystrophin and spectrin.

**序列相似性** Belongs to the intermediate filament family.

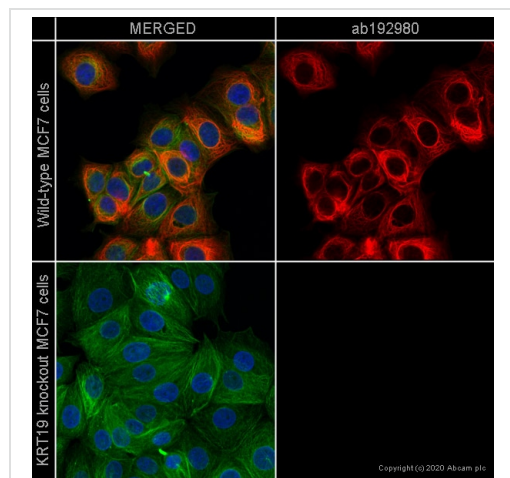
## 发展阶段

Present in hair follicles at all stages of development.

## 结构域

This keratin differs from all other IF proteins in lacking the C-terminal tail domain.

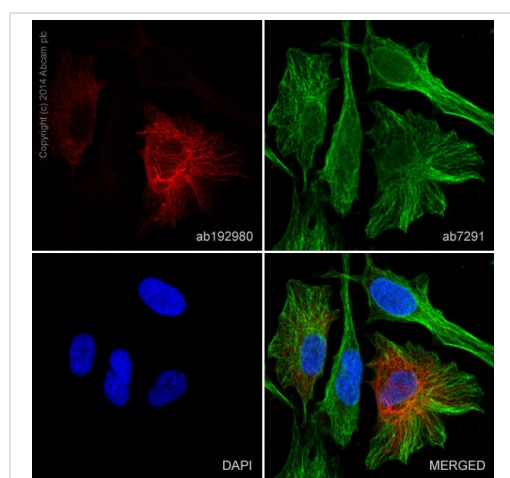
## 图片



Immunocytochemistry/ Immunofluorescence - Alexa Fluor® 647 Anti-Cytokeratin 19 antibody [EP1580Y] (ab192980)

ab192980 staining Cytokeratin 19 in wild-type MCF7 cells (top panel) and KRT19 knockout MCF7 cells (bottom panel). The cells were fixed with 4% paraformaldehyde (10 min), permeabilized with 0.1% Triton X-100 for 5 minutes and then blocked with 1% BSA/10% normal goat serum/0.3M glycine in 0.1% PBS-Tween for 1h. The cells were then incubated with ab192980 at 1/100 dilution (shown in red) and [ab195887](#) (Mouse monoclonal to alpha Tubulin - Alexa Fluor® 488) at 1/250 dilution (shown in green) overnight at +4°C. Nuclear DNA was labelled in blue with DAPI.

Image was taken with a confocal microscope (Leica-Microsystems, TCS SP8).

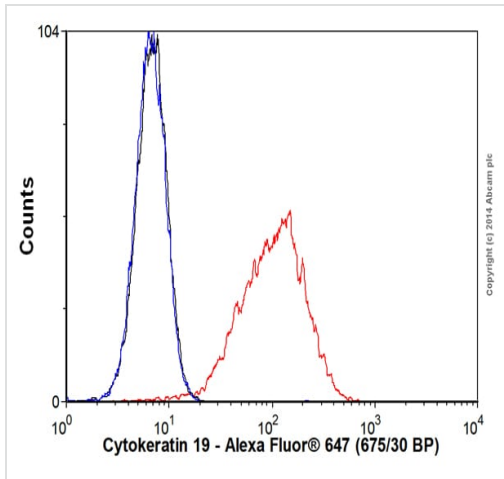


Immunocytochemistry/ Immunofluorescence - Alexa Fluor® 647 Anti-Cytokeratin 19 antibody [EP1580Y] (ab192980)

ab192980 staining Cytokeratin 19 in HeLa cells. The cells were fixed with 100% methanol (5 min) and then blocked in 1% BSA/10% normal goat serum/0.3M glycine in 0.1% PBS-Triton X-100 for 1hr. The cells were then incubated with ab192980 at a working dilution of 1 in 50 (shown in red) and [ab7291](#) (Mouse monoclonal [DM1A] to alpha Tubulin) at 1 µg/ml overnight at +4°C, followed by a further incubation at room temperature for 1hr with an AlexaFluor® 488 Goat anti-mouse IgG (H&L - preadsorbed) secondary ([ab150117](#)) at 2 µg/ml (shown in green). Nuclear DNA was labelled in blue with DAPI.

This product gave a positive signal in 4% formaldehyde (10 min) fixed HeLa cells under the same testing conditions

Image was taken with a Confocal microscope (Leica microsystems, TCS SP8).







Flow Cytometry (Intracellular) - Alexa Fluor® 647  
Anti-Cytokeratin 19 antibody [EP1580Y] (ab192980)

Overlay histogram showing HeLa cells stained with ab192980 (red line). The cells were fixed with 80% methanol (5 min) and then permeabilized with 0.1% PBS-Tween for 20 min. The cells were then incubated in 1x PBS / 10% normal goat serum / 0.3M glycine to block non-specific protein-protein interactions followed by the antibody (ab192980, 0.2µl/1x10<sup>6</sup> cells) for 30 min at 22°C. Isotype control antibody (black line) was rabbit IgG (monoclonal) (Alexa Fluor® 647) (0.1µg/1x10<sup>6</sup> cells) for 30 min at 22°C. Unlabelled sample (blue line) was also used as a control.

Acquisition of >5,000 events were collected using a 25mW red solid state diode laser (635nm) and 675/30 bandpass filter.

This antibody gave a positive signal in HeLa fixed with 4% formaldehyde (10 min)/permeabilized with 0.1% PBS-Tween for 20 min used under the same conditions.

**Why choose a recombinant antibody?**

 <b>Research with confidence</b> Consistent and reproducible results	 <b>Long-term and scalable supply</b> Recombinant technology
 <b>Success from the first experiment</b> Confirmed specificity	 <b>Ethical standards compliant</b> Animal-free production

Alexa Fluor® 647 Anti-Cytokeratin 19 antibody  
[EP1580Y] (ab192980)

**Please note:** All products are "FOR RESEARCH USE ONLY. NOT FOR USE IN DIAGNOSTIC PROCEDURES"

**Our Abpromise to you: Quality guaranteed and expert technical support**

- Replacement or refund for products not performing as stated on the datasheet
- Valid for 12 months from date of delivery

- Response to your inquiry within 24 hours
- We provide support in Chinese, English, French, German, Japanese and Spanish
- Extensive multi-media technical resources to help you
- We investigate all quality concerns to ensure our products perform to the highest standards

If the product does not perform as described on this datasheet, we will offer a refund or replacement. For full details of the Abpromise, please visit <https://www.abcam.cn/abpromise> or contact our technical team.

### **Terms and conditions**

---

- Guarantee only valid for products bought direct from Abcam or one of our authorized distributors