


### Alexa Fluor® 488 Anti-MSI2 antibody [EP1305Y] ab199067

重组 RabMAb

#### 3 图像

#### 概述

产品名称	Alexa Fluor® 488荧光Anti-MSI2抗体[EP1305Y]
描述	Alexa Fluor® 488荧光兔单克隆抗体[EP1305Y] to MSI2
宿主	Rabbit
偶联物	Alexa Fluor® 488. Ex: 495nm, Em: 519nm
经测试应用	适用于: ICC/IF
种属反应性	与反应: Rat 预测可用于: Mouse, Human 
免疫原	Synthetic peptide. This information is proprietary to Abcam and/or its suppliers.
表位	Based on the immunogen sequence for this antibody, it is not predicted to detect the shorter isoforms of MSI2.
阳性对照	ICC/IF: PC12 and B35 cells
常规说明	<p>Our RabMAb® technology is a patented hybridoma-based technology for making rabbit monoclonal antibodies. For details on our patents, please refer to <a href="#">RabMAb® patents</a>.</p> <p>Alexa Fluor® is a registered trademark of Molecular Probes, Inc, a Thermo Fisher Scientific Company. The Alexa Fluor® dye included in this product is provided under an intellectual property license from Life Technologies Corporation. As this product contains the Alexa Fluor® dye, the purchase of this product conveys to the buyer the non-transferable right to use the purchased product and components of the product only in research conducted by the buyer (whether the buyer is an academic or for-profit entity). As this product contains the Alexa Fluor® dye the sale of this product is expressly conditioned on the buyer not using the product or its components, or any materials made using the product or its components, in any activity to generate revenue, which may include, but is not limited to use of the product or its components: (i) in manufacturing; (ii) to provide a service, information, or data in return for payment (iii) for therapeutic, diagnostic or prophylactic purposes; or (iv) for resale, regardless of whether they are sold for use in research. For information on purchasing a license to this product for purposes other than research, contact Life Technologies Corporation, 5781 Van Allen Way, Carlsbad, CA 92008 USA or <a href="mailto:outlicensing@thermofisher.com">outlicensing@thermofisher.com</a>.</p>

#### 性能

形式	Liquid
存放说明	Shipped at 4°C. Store at +4°C short term (1-2 weeks). Upon delivery aliquot. Store at -20°C. Avoid freeze / thaw cycle. Store In the Dark.
存储溶液	pH: 7.40 Preservative: 0.02% Sodium azide Constituents: PBS, 30% Glycerol (glycerin, glycerine), 1% BSA
纯度	Protein A purified
克隆	单克隆
克隆编号	EP1305Y
同种型	IgG

## 应用

**The Abpromise guarantee**      **Abpromise™** 承诺保证使用 ab199067 于以下的经测试应用

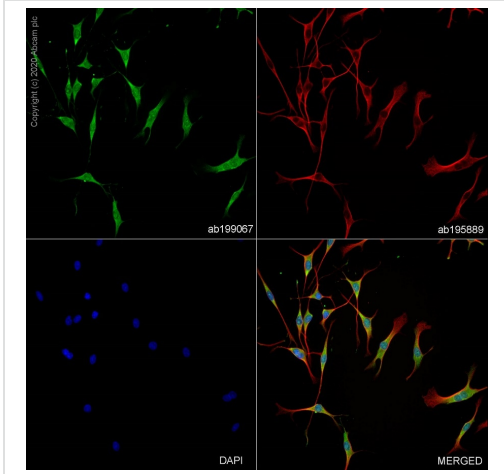
“应用说明”部分下显示的仅为推荐的起始稀释度；实际最佳的稀释度/浓度应由使用者检定。

应用	Ab 评论	说明
ICC/IF		1/50.

## 靶标

功能	RNA binding protein that regulates the expression of target mRNAs at the translation level. May play a role in the proliferation and maintenance of stem cells in the central nervous system.
组织特异性	Ubiquitous; detected at low levels.
疾病相关	Note=Chromosomal aberrations involving MSI2 may contribute to disease progression in chronic myeloid leukemia. Translocation t(7;17)(p15;q23) with HOXA9; translocation t(7;17)(q32-34;q23).
序列相似性	Belongs to the Musashi family. Contains 2 RRM (RNA recognition motif) domains.
翻译后修饰	Phosphorylated.
细胞定位	Cytoplasm. Associated with polysomes.

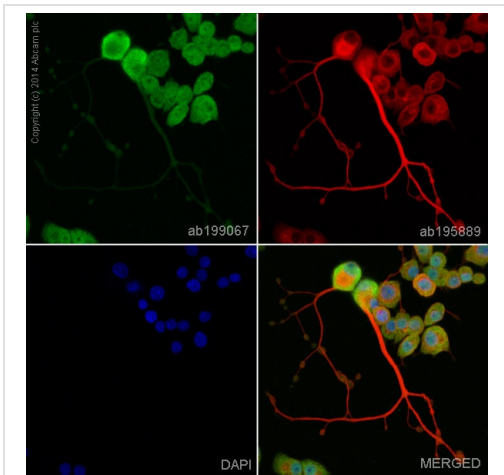
## 图片



Immunocytochemistry/ Immunofluorescence - Alexa Fluor® 488 Anti-MSI2 antibody [EP1305Y] (ab199067)

ab199067 staining MSI2 in B35 cells. The cells were fixed with 100% methanol (5min), permeabilized with 0.1% Triton X-100 for 5 minutes and then blocked with 1% BSA/10% normal goat serum/0.3M glycine in 0.1% PBS-Tween for 1h. The cells were then incubated overnight at +4°C with ab199067 at 1/50 dilution (shown in green) and **ab195889**, Mouse monoclonal to alpha Tubulin (Alexa Fluor® 594), at 2µg/ml (shown in red). Nuclear DNA was labelled with DAPI (shown in blue).

Image was taken with a High content analyser (Perkin Elmer).



Immunocytochemistry/ Immunofluorescence - Alexa Fluor® 488 Anti-MSI2 antibody [EP1305Y] (ab199067)

ab199067 staining MSI2 in PC12 cells. The cells were fixed with 4% formaldehyde (10min), permeabilized with 0.1% Triton X-100 for 5 minutes and then blocked with 1% BSA/10% normal goat serum/0.3M glycine in 0.1% PBS-Tween for 1h. The cells were then incubated overnight at +4°C with ab199067 at 1/50 dilution (shown in green) and **ab195889**, Mouse monoclonal to alpha Tubulin (Alexa Fluor® 594), at 2µg/ml (shown in red). Nuclear DNA was labelled with DAPI (shown in blue).

Image was taken with a confocal microscope (Leica-Microsystems, TCS SP8).

### Why choose a recombinant antibody?



**Research with confidence**  
Consistent and reproducible results



**Long-term and scalable supply**  
Recombinant technology



**Success from the first experiment**  
Confirmed specificity



**Ethical standards compliant**  
Animal-free production

Alexa Fluor® 488 Anti-MSI2 antibody [EP1305Y]  
(ab199067)

**Please note:** All products are "FOR RESEARCH USE ONLY. NOT FOR USE IN DIAGNOSTIC PROCEDURES"

### Our Abpromise to you: Quality guaranteed and expert technical support

---

- Replacement or refund for products not performing as stated on the datasheet
- Valid for 12 months from date of delivery
- Response to your inquiry within 24 hours
- We provide support in Chinese, English, French, German, Japanese and Spanish
- Extensive multi-media technical resources to help you
- We investigate all quality concerns to ensure our products perform to the highest standards

If the product does not perform as described on this datasheet, we will offer a refund or replacement. For full details of the Abpromise, please visit <https://www.abcam.cn/abpromise> or contact our technical team.

### Terms and conditions

---

- Guarantee only valid for products bought direct from Abcam or one of our authorized distributors