


Alexa Fluor® 488 Anti-Cyclophilin F antibody [E11AE12BD4] ab156032

3 图像

概述

产品名称	Alexa Fluor® 488荧光Anti-Cyclophilin F抗体[E11AE12BD4]
描述	Alexa Fluor® 488荧光小鼠单克隆抗体[E11AE12BD4] to Cyclophilin F
宿主	Mouse
偶联物	Alexa Fluor® 488. Ex: 495nm, Em: 519nm
经测试应用	适用于: Flow Cyt (Intra), ICC/IF
种属反应性	与反应: Mouse, Human 预测可用于: Rat, Cow 
免疫原	Recombinant full length protein corresponding to Rat Cyclophilin F.
阳性对照	HDFn and HeLa cells.
常规说明	<p>Alexa Fluor® is a registered trademark of Molecular Probes, Inc, a Thermo Fisher Scientific Company. The Alexa Fluor® dye included in this product is provided under an intellectual property license from Life Technologies Corporation. As this product contains the Alexa Fluor® dye, the purchase of this product conveys to the buyer the non-transferable right to use the purchased product and components of the product only in research conducted by the buyer (whether the buyer is an academic or for-profit entity). As this product contains the Alexa Fluor® dye the sale of this product is expressly conditioned on the buyer not using the product or its components, or any materials made using the product or its components, in any activity to generate revenue, which may include, but is not limited to use of the product or its components: (i) in manufacturing; (ii) to provide a service, information, or data in return for payment (iii) for therapeutic, diagnostic or prophylactic purposes; or (iv) for resale, regardless of whether they are sold for use in research. For information on purchasing a license to this product for purposes other than research, contact Life Technologies Corporation, 5781 Van Allen Way, Carlsbad, CA 92008 USA or outlicensing@thermofisher.com.</p>

The Life Science industry has been in the grips of a reproducibility crisis for a number of years. Abcam is leading the way in addressing this with our range of recombinant monoclonal antibodies and knockout edited cell lines for gold-standard validation. Please check that this product meets your needs before purchasing.

If you have any questions, special requirements or concerns, please send us an inquiry and/or contact our Support team ahead of purchase. Recommended alternatives for this product can be found below, along with publications, customer reviews and Q&As

Product was previously marketed under the MitoSciences sub-brand.

性能

形式	Liquid
存放说明	Shipped at 4°C. Store at +4°C.
存储溶液	Preservative: 0.02% Sodium azide Constituents: 30% Glycerol (glycerin, glycerine), 1% BSA, 68% PBS
纯化说明	ab156032 is a conjugated form of ab110324 which was produced in vitro using hybridomas grown in serum-free medium, and then purified by biochemical fractionation.
克隆	单克隆
克隆编号	E11AE12BD4
同种型	IgG1

应用

The Abpromise guarantee **Abpromise™** 承诺保证使用ab156032于以下的经测试应用

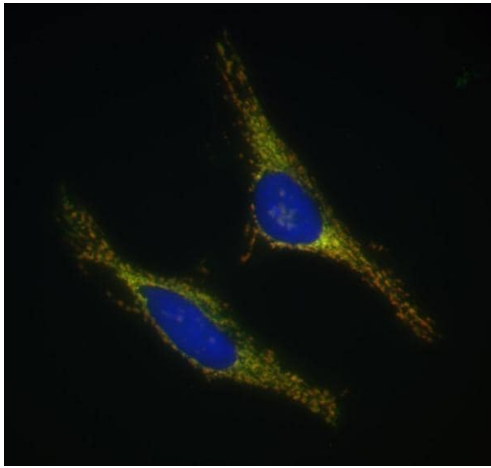
“应用说明”部分 下显示的仅为推荐的起始稀释度;实际最佳的稀释度/浓度应由使用者检定。

应用	Ab评论	说明
Flow Cyt (Intra)		Use a concentration of 0.2 µg/ml. ab171463 - Mouse monoclonal IgG1, is suitable for use as an isotype control with this antibody.
ICC/IF		Use a concentration of 5 µg/ml.

靶标

功能	PPlases accelerate the folding of proteins. It catalyzes the cis-trans isomerization of proline imidic peptide bonds in oligopeptides.
序列相似性	Belongs to the cyclophilin-type PPlase family. Contains 1 PPlase cyclophilin-type domain.
细胞定位	Mitochondrion matrix.
形式	This gene encodes a 178 aa mature protein that is found in the mitochondrion and may participate in the permeability transition pore. While technically this protein is Cyclophilin F, literature references commonly refer to this protein as 'cyclophilin D' or 'CypD'. A different cytoplasmic protein of 370 aa, represented by Entrez GeneID 5481, is identified as Cyclophilin D. This antibody does not react with this 370 aa cytoplasmic protein.

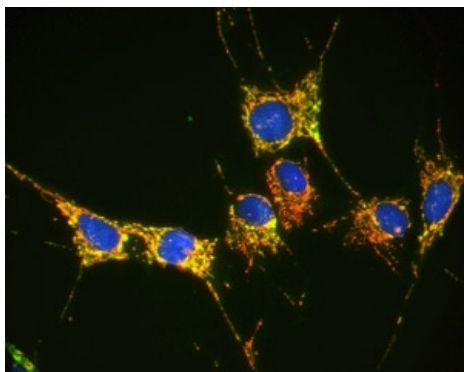
图片



Immunocytochemistry/ Immunofluorescence - Alexa
Fluor® 488 Anti-Cyclophilin F antibody
[E11AE12BD4] (ab156032)

Immunofluorescent analysis of paraformaldehyde-fixed HeLa cells labeling Cyclophilin F with ab156032 at 5.0 µg/ml, (green); Anti-HSP60 (1/2500, [ab46798](#)) as red, and DAPI in blue, as a nuclear stain.

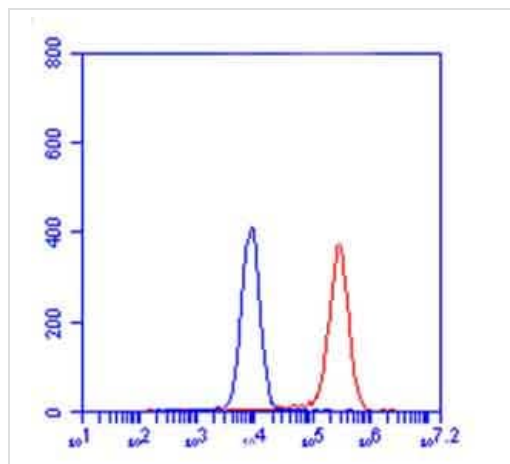
Secondary antibody used was goat anti-rabbit Alexa594 (1/1000). All blocking and antibodies were diluted in 10% normal goat serum.



Immunocytochemistry/ Immunofluorescence - Alexa
Fluor® 488 Anti-Cyclophilin F antibody
[E11AE12BD4] (ab156032)

Immunofluorescent analysis of paraformaldehyde-fixed HDFn cells labeling Cyclophilin F with ab156032 at 5.0 µg/ml (green); Anti-HSP60 (1/2500, [ab46798](#)) as red, and DAPI in blue, as a nuclear stain.

Secondary antibody used was goat anti-rabbit Alexa594 (1/1000). All blocking and antibodies were diluted in 10% normal goat serum



Flow Cytometry (Intracellular) - Alexa Fluor® 488
Anti-Cyclophilin F antibody [E11AE12BD4]
(ab156032)

Flow cytometric analysis of HeLa cells labeling Cyclophilin F with ab156032 at 0.2 µg/ml (red) or an equal amount of IgG1 Alexa-488 Isotype control antibody (blue).

Please note: All products are "FOR RESEARCH USE ONLY. NOT FOR USE IN DIAGNOSTIC PROCEDURES"

Our Abpromise to you: Quality guaranteed and expert technical support

- Replacement or refund for products not performing as stated on the datasheet
- Valid for 12 months from date of delivery
- Response to your inquiry within 24 hours
- We provide support in Chinese, English, French, German, Japanese and Spanish
- Extensive multi-media technical resources to help you
- We investigate all quality concerns to ensure our products perform to the highest standards

If the product does not perform as described on this datasheet, we will offer a refund or replacement. For full details of the Abpromise, please visit <https://www.abcam.cn/abpromise> or contact our technical team.

Terms and conditions

- Guarantee only valid for products bought direct from Abcam or one of our authorized distributors