


Anti-Aldolase C antibody - Astrocyte Marker ab87122

★★★★★ [1 Abreviews](#) [7 References](#) [2 图像](#)

概述

产品名称	Anti-Aldolase C抗体- Astrocyte Marker
描述	兔多克隆抗体to Aldolase C - Astrocyte Marker
宿主	Rabbit
经测试应用	适用于: WB, ICC/IF
种属反应性	与反应: Mouse, Rat, Human 预测可用于: Cow, Chimpanzee, Monkey 
免疫原	Synthetic peptide corresponding to Mouse Aldolase C aa 50-150 conjugated to keyhole limpet haemocyanin. (Peptide available as ab101304)
常规说明	<p>The Life Science industry has been in the grips of a reproducibility crisis for a number of years. Abcam is leading the way in addressing this with our range of recombinant monoclonal antibodies and knockout edited cell lines for gold-standard validation. Please check that this product meets your needs before purchasing.</p> <p>If you have any questions, special requirements or concerns, please send us an inquiry and/or contact our Support team ahead of purchase. Recommended alternatives for this product can be found below, along with publications, customer reviews and Q&As</p>

性能

形式	Liquid
存放说明	Shipped at 4°C. Store at +4°C short term (1-2 weeks). Upon delivery aliquot. Store at -20°C or -80°C. Avoid freeze / thaw cycle.
存储溶液	pH: 7.40 Preservative: 0.02% Sodium azide Constituent: PBS Batches of this product that have a concentration < 1mg/ml may have BSA added as a stabilising agent. If you would like information about the formulation of a specific lot, please contact our scientific support team who will be happy to help.
纯度	Immunogen affinity purified
克隆	多克隆

同种型

IgG

应用

The Abpromise guarantee **Abpromise™**承诺保证使用ab87122于以下的经测试应用

“应用说明”部分 下显示的仅为推荐的起始稀释度;实际最佳的稀释度/浓度应由使用者检定。

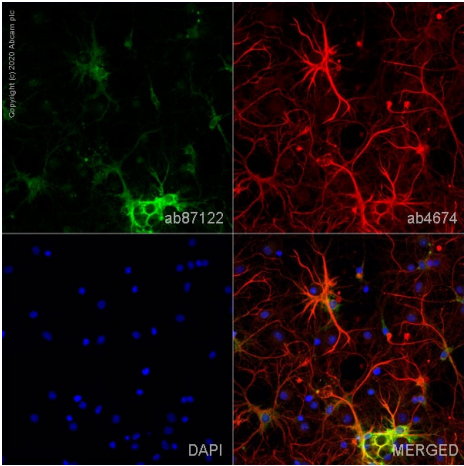
应用	Ab评论	说明
WB		Use a concentration of 1 µg/ml. Detects a band of approximately 44 kDa (predicted molecular weight: 39 kDa).
ICC/IF		Use a concentration of 5 µg/ml.

靶标

通路 Carbohydrate degradation; glycolysis; D-glyceraldehyde 3-phosphate and glycerone phosphate from D-glucose: step 4/4.

序列相似性 Belongs to the class I fructose-bisphosphate aldolase family.

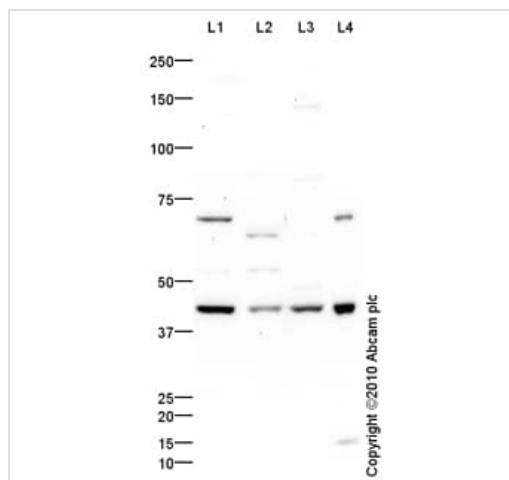
图片



Immunocytochemistry/ Immunofluorescence - Anti-Aldolase C antibody - Astrocyte Marker (ab87122)

ab87122 staining Fructose-bisphosphate aldolase C in primary hippocampal rat neurons/glia, (obtained from Neuromics, cat. no. PC35101), DIV14. The cells were fixed with 100% methanol (5 min), permeabilized with 0.1% PBS-Tween for 5 minutes and then blocked with 1% BSA/10% normal goat serum/0.3M glycine in 0.1%PBS-Tween for 1h. The cells were then incubated overnight at 4°C with ab87122 at 5µg/ml and **ab4674**, Chicken polyclonal to GFAP. Cells were then incubated with **ab150081**, Goat polyclonal Secondary Antibody to Rabbit IgG - H&L (Alexa Fluor® 488), pre-adsorbed at 1/1000 dilution (shown in green) and **ab150176**, Goat polyclonal Secondary Antibody to Chicken IgY - H&L (Alexa Fluor® 594), pre-adsorbed at 1/1000 dilution (shown in pseudocolour red). Nuclear DNA was labelled with DAPI (shown in blue).

Image was acquired with a high-content analyser (Operetta CLS, Perkin Elmer) and a maximum intensity projection of confocal sections is shown.



Western blot - Anti-Aldolase C antibody - Astrocyte Marker (ab87122)

All lanes : Anti-Aldolase C antibody - Astrocyte Marker (ab87122) at 1 µg/ml

Lane 1 : Brain (Mouse) Tissue Lysate

Lane 2 : Skeletal Muscle (Mouse) Tissue Lysate

Lane 3 : Jurkat (Human T cell lymphoblast-like cell line) Whole Cell Lysate

Lane 4 : Cerebellum Rat Tissue Lysate

Lysates/proteins at 10 µg per lane.

Secondary

All lanes : Goat polyclonal to Rabbit IgG - H&L - Pre-Adsorbed (HRP) at 1/3000 dilution

Developed using the ECL technique.

Performed under reducing conditions.

Predicted band size: 39 kDa

Observed band size: 44 kDa

Additional bands at: 55 kDa, 71 kDa. We are unsure as to the identity of these extra bands.

Exposure time: 5 minutes

The 44 kDa band observed is comparable to the molecular weight seen with other commercially available antibodies to Mouse Fructose-bisphosphate aldolase C.

Please note: All products are "FOR RESEARCH USE ONLY. NOT FOR USE IN DIAGNOSTIC PROCEDURES"

Our Abpromise to you: Quality guaranteed and expert technical support

- Replacement or refund for products not performing as stated on the datasheet
- Valid for 12 months from date of delivery
- Response to your inquiry within 24 hours

- We provide support in Chinese, English, French, German, Japanese and Spanish
- Extensive multi-media technical resources to help you
- We investigate all quality concerns to ensure our products perform to the highest standards

If the product does not perform as described on this datasheet, we will offer a refund or replacement. For full details of the Abpromise, please visit <https://www.abcam.cn/abpromise> or contact our technical team.

Terms and conditions

- Guarantee only valid for products bought direct from Abcam or one of our authorized distributors