

Anti-Aldolase B + Aldolase C antibody [EPR3138Y] ab75751

重组 RabMAb

★★★★★ **2 Abreviews** **4 References** **6 图像**

概述

产品名称	Anti-Aldolase B + Aldolase C抗体[EPR3138Y]
描述	兔单克隆抗体[EPR3138Y] to Aldolase B + Aldolase C
宿主	Rabbit
经测试应用	适用于: Flow Cyt, WB, IHC-P
种属反应性	与反应: Mouse, Rat, Human
免疫原	Synthetic peptide within Human Aldolase B aa 250-350. The exact sequence is proprietary. Database link: P05062
阳性对照	IHC: Human, mouse and rat kidney tissues. WB: Human, mouse and rat kidney lysate. His-tagged human Aldolase B and C full-length recombinant protein.
常规说明	This product is a recombinant monoclonal antibody, which offers several advantages including: <ul style="list-style-type: none"> - High batch-to-batch consistency and reproducibility - Improved sensitivity and specificity - Long-term security of supply - Animal-free production For more information see here . Our RabMAb® technology is a patented hybridoma-based technology for making rabbit monoclonal antibodies. For details on our patents, please refer to RabMAb® patents .

性能

形式	Liquid
存放说明	Shipped at 4°C. Store at +4°C short term (1-2 weeks). Upon delivery aliquot. Store at -20°C long term. Avoid freeze / thaw cycle.
存储溶液	pH: 7.20 Preservative: 0.01% Sodium azide Constituents: 59% PBS, 40% Glycerol (glycerin, glycerine), 0.05% BSA
纯度	Protein A purified
克隆	单克隆
克隆编号	EPR3138Y

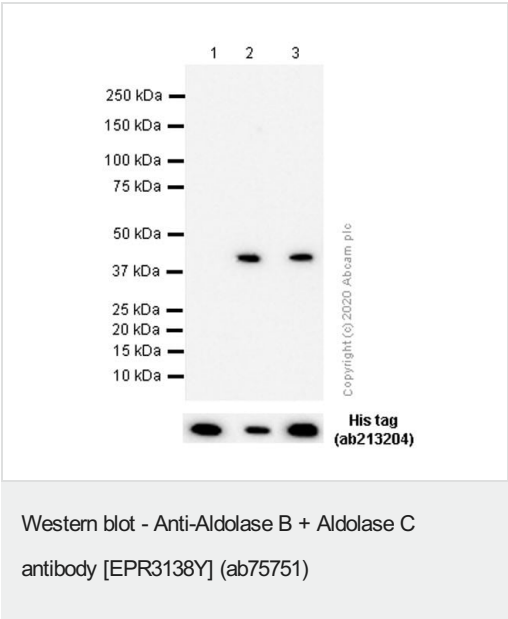
应用

The Abpromise guarantee **Abpromise™**承诺保证使用ab75751于以下的经测试应用

“应用说明”部分 下显示的仅为推荐的起始稀释度;实际最佳的稀释度/浓度应由使用者检定。

应用	Ab评论	说明
Flow Cyt		Use at an assay dependent concentration. ab172730 - Rabbit monoclonal IgG, is suitable for use as an isotype control with this antibody.
WB		1/1000. Predicted molecular weight: 39 kDa. For unpurified use at 1/500 - 1/1000.
IHC-P		1/100 - 1/250. Perform heat mediated antigen retrieval with citrate buffer pH 6 before commencing with IHC staining protocol. See IHC antigen retrieval protocols .

图片



All lanes : Anti-Aldolase B + Aldolase C antibody [EPR3138Y] (ab75751) at 1/200 dilution

Lane 1 : His-tagged human Aldolase A full-length recombinant protein

Lane 2 : His-tagged human Aldolase B full-length recombinant protein

Lane 3 : His-tagged human Aldolase C full-length recombinant protein

Lysates/proteins at 0.01 µg per lane.

Secondary

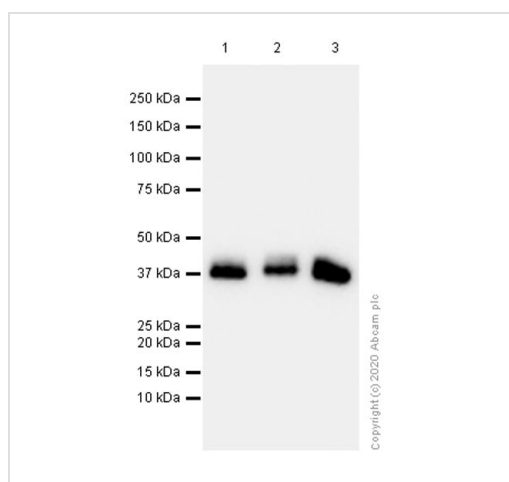
All lanes : Goat Anti-Rabbit IgG H&L (HRP) (**ab97051**) at 1/20000 dilution

Predicted band size: 39 kDa

Observed band size: 40 kDa

Exposure time: 40 seconds

Blocking and diluting buffer and concentration: 5% NFDM/TBST



Western blot - Anti-Aldolase B + Aldolase C antibody [EPR3138Y] (ab75751)

All lanes : Anti-Aldolase B + Aldolase C antibody [EPR3138Y] (ab75751) at 1/1000 dilution (Purified)

Lane 1 : Human kidney lysate

Lane 2 : Mouse kidney lysate

Lane 3 : Rat kidney lysate

Lysates/proteins at 20 µg per lane.

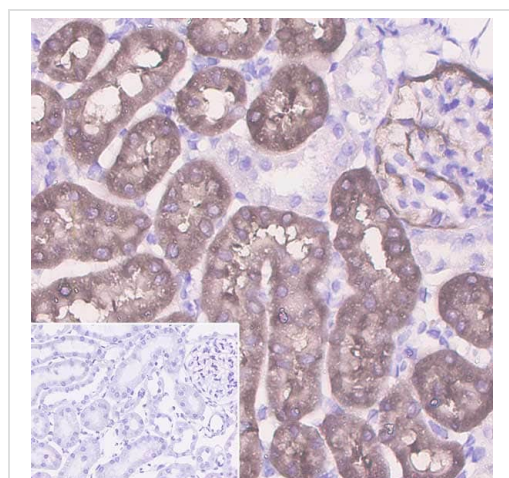
Secondary

All lanes : Goat Anti-Rabbit IgG (HRP) with minimal cross-reactivity with human IgG at 1/2000 dilution

Predicted band size: 39 kDa

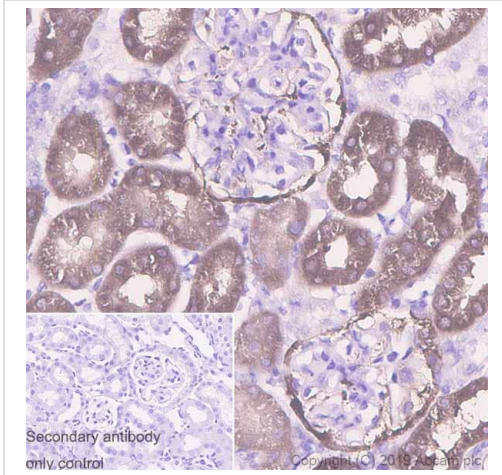
Observed band size: 39 kDa

Blocking Buffer and concentration: 5% NFDM/TBST



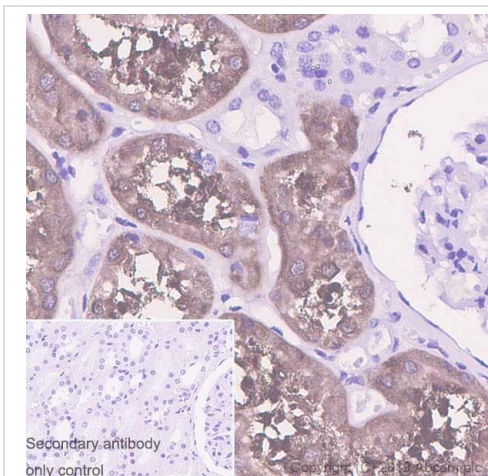
Immunohistochemistry (Formalin/PFA-fixed paraffin-embedded sections) - Anti-Aldolase B + Aldolase C antibody [EPR3138Y] (ab75751)

Immunohistochemistry (Formalin/PFA-fixed paraffin-embedded sections) analysis of rat kidney tissue sections labeling Aldolase B with Purified ab75751 at 1:100 dilution (1.47 µg/ml). Perform heat mediated antigen retrieval using [ab93684](#) (Tris/EDTA buffer, pH 9.0). ImmunoHistoProbe one step HRP Polymer (ready to use) was used as the secondary antibody. Negative control: PBS instead of the primary antibody. Hematoxylin was used as a counterstain.



Immunohistochemistry (Formalin/PFA-fixed paraffin-embedded sections) analysis of mouse kidney tissue sections labeling Aldolase B with Purified ab75751 at 1:100 dilution (1.47 µg/ml). Perform heat mediated antigen retrieval using **ab93684** (Tris/EDTA buffer, pH 9.0). ImmunoHistoProbe one step HRP Polymer (ready to use) was used as the secondary antibody. Negative control: PBS instead of the primary antibody. Hematoxylin was used as a counterstain.

Immunohistochemistry (Formalin/PFA-fixed paraffin-embedded sections) - Anti-Aldolase B + Aldolase C antibody [EPR3138Y] (ab75751)



Immunohistochemistry (Formalin/PFA-fixed paraffin-embedded sections) analysis of human kidney tissue sections labeling Aldolase B with Purified ab75751 at 1:100 dilution (1.47 µg/ml). Perform heat mediated antigen retrieval using **ab93684** (Tris/EDTA buffer, pH 9.0). ImmunoHistoProbe one step HRP Polymer (ready to use) was used as the secondary antibody. Negative control: PBS instead of the primary antibody. Hematoxylin was used as a counterstain.

Immunohistochemistry (Formalin/PFA-fixed paraffin-embedded sections) - Anti-Aldolase B + Aldolase C antibody [EPR3138Y] (ab75751)

Why choose a recombinant antibody?



Research with confidence
Consistent and reproducible results



Long-term and scalable supply
Recombinant technology



Success from the first experiment
Confirmed specificity



Ethical standards compliant
Animal-free production

Anti-Aldolase B + Aldolase C antibody [EPR3138Y]
(ab75751)

Please note: All products are "FOR RESEARCH USE ONLY. NOT FOR USE IN DIAGNOSTIC PROCEDURES"

Our Abpromise to you: Quality guaranteed and expert technical support

- Replacement or refund for products not performing as stated on the datasheet
- Valid for 12 months from date of delivery
- Response to your inquiry within 24 hours
- We provide support in Chinese, English, French, German, Japanese and Spanish
- Extensive multi-media technical resources to help you
- We investigate all quality concerns to ensure our products perform to the highest standards

If the product does not perform as described on this datasheet, we will offer a refund or replacement. For full details of the Abpromise, please visit <https://www.abcam.cn/abpromise> or contact our technical team.

Terms and conditions

- Guarantee only valid for products bought direct from Abcam or one of our authorized distributors