

Anti-ALDH2 antibody ab115198

★★★★★ [2 Abreviews](#) [3 图像](#)

概述

| | |
|-------|---|
| 产品名称 | Anti-ALDH2抗体 |
| 描述 | 兔多克隆抗体to ALDH2 |
| 宿主 | Rabbit |
| 经测试应用 | 适用于: Flow Cyt (Intra), WB, IHC-P |
| 种属反应性 | 与反应: Human |
| 免疫原 | Synthetic peptide conjugated to KLH, corresponding to amino acids from the N terminal region of ALDH2. |
| 阳性对照 | IHC-P: Human Liver tissue. Flow Cyt (Intra): HepG2 cells. WB: 293 cell lysate transiently transfected with the ALDH2 gene. |
| 常规说明 | <p>The Life Science industry has been in the grips of a reproducibility crisis for a number of years. Abcam is leading the way in addressing this with our range of recombinant monoclonal antibodies and knockout edited cell lines for gold-standard validation. Please check that this product meets your needs before purchasing.</p> <p>If you have any questions, special requirements or concerns, please send us an inquiry and/or contact our Support team ahead of purchase. Recommended alternatives for this product can be found below, along with publications, customer reviews and Q&As</p> |

性能

| | |
|------|--|
| 形式 | Liquid |
| 存放说明 | Shipped at 4°C. Store at +4°C short term (1-2 weeks). Upon delivery aliquot. Store at -20°C long term. |
| 存储溶液 | <p>pH: 7.4</p> <p>Preservative: 0.09% Sodium azide</p> <p>Constituent: 99% PBS</p> |
| 纯度 | Protein A purified |
| 克隆 | 多克隆 |
| 同种型 | IgG |

应用

The Abpromise guarantee

Abpromise™ 承诺保证使用ab115198于以下的经测试应用

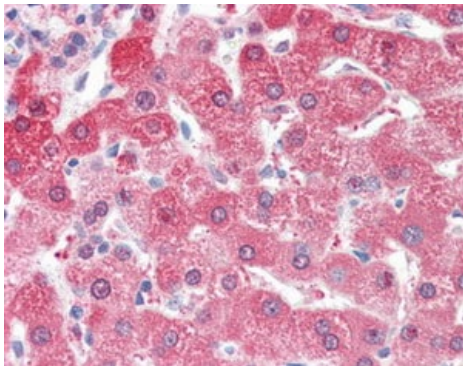
“应用说明”部分 下显示的仅为推荐的起始稀释度;实际最佳的稀释度/浓度应由使用者检定。

| 应用 | Ab评论 | 说明 |
|------------------|-----------|--|
| Flow Cyt (Intra) | | Use at an assay dependent concentration. ab171870 - Rabbit polyclonal IgG, is suitable for use as an isotype control with this antibody. |
| WB | ★★★★★ (1) | 1/50 - 1/100. Predicted molecular weight: 56 kDa. |
| IHC-P | | Use a concentration of 10 µg/ml. Perform heat mediated antigen retrieval with citrate buffer pH 6 before commencing with IHC staining protocol. |

靶标

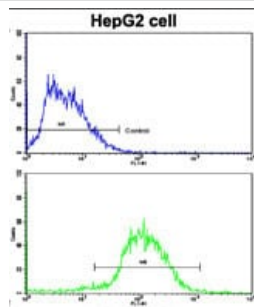
| | |
|-------|--|
| 通路 | Alcohol metabolism; ethanol degradation; acetate from ethanol: step 2/2. |
| 序列相似性 | Belongs to the aldehyde dehydrogenase family. |
| 细胞定位 | Mitochondrion matrix. |

图片



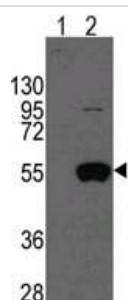
ab115198 at 10 µg/ml staining ALDH2 Formalin-fixed, Paraffin-embedded Human Liver tissue by Immunohistochemistry followed by biotinylated secondary antibody, alkaline phosphatase-streptavidin and chromogen.

Immunohistochemistry (Formalin/PFA-fixed paraffin-embedded sections) - Anti-ALDH2 antibody (ab115198)



Flow Cytometry (Intracellular) - Anti-ALDH2 antibody (ab115198)

Intracellular flow cytometric analysis of HepG2 cells, staining ALDH2 with ab115198 (bottom histogram), compared to a negative control cell (top histogram). A FITC-conjugated goat-anti-rabbit IgG was used as the secondary antibody.



Western blot - Anti-ALDH2 antibody (ab115198)

All lanes : Anti-ALDH2 antibody (ab115198) at 1/50 dilution

Lane 1 : 293 cell lysate, non-transfected

Lane 2 : 293 cell lysate, transiently transfected with ALDH2 gene

Lysates/proteins at 2 µg per lane.

Predicted band size: 56 kDa

Please note: All products are "FOR RESEARCH USE ONLY. NOT FOR USE IN DIAGNOSTIC PROCEDURES"

Our Abpromise to you: Quality guaranteed and expert technical support

- Replacement or refund for products not performing as stated on the datasheet
- Valid for 12 months from date of delivery
- Response to your inquiry within 24 hours
- We provide support in Chinese, English, French, German, Japanese and Spanish
- Extensive multi-media technical resources to help you
- We investigate all quality concerns to ensure our products perform to the highest standards

If the product does not perform as described on this datasheet, we will offer a refund or replacement. For full details of the Abpromise, please visit <https://www.abcam.cn/abpromise> or contact our technical team.

Terms and conditions

- Guarantee only valid for products bought direct from Abcam or one of our authorized distributors