

# Anti-ALDH2 antibody [9A10AF10] ab110311

## 2 图像

### 概述

产品名称	Anti-ALDH2抗体[9A10AF10]
描述	小鼠单克隆抗体[9A10AF10] to ALDH2
宿主	Mouse
经测试应用	适用于: ICC/IF, IP
种属反应性	与反应: Mouse, Rat, Human
免疫原	Tissue, cells or virus. This information is considered to be commercially sensitive.
阳性对照	HepG2 cells; Human, Rat and Mouse liver and HepG2 whole cell lysate ( <a href="#">ab7900</a> ).
常规说明	<p>This antibody clone is manufactured by Abcam. If you require a custom buffer formulation or conjugation for your experiments, please contact <a href="mailto:orders@abcam.com">orders@abcam.com</a>.</p> <p>The Life Science industry has been in the grips of a reproducibility crisis for a number of years. Abcam is leading the way in addressing this with our range of recombinant monoclonal antibodies and knockout edited cell lines for gold-standard validation. Please check that this product meets your needs before purchasing.</p> <p>If you have any questions, special requirements or concerns, please send us an inquiry and/or contact our Support team ahead of purchase. Recommended alternatives for this product can be found below, along with publications, customer reviews and Q&amp;As</p> <p>Product was previously marketed under the MitoSciences sub-brand.</p>

### 性能

形式	Liquid
存放说明	Shipped at 4°C. Store at +4°C. Do Not Freeze.
存储溶液	<p>pH: 7.5</p> <p>Preservative: 0.02% Sodium azide</p> <p>Constituent: HEPES buffered saline</p>
纯化说明	ab110311 was produced in vitro using hybridomas grown in serum-free medium, and then purified by biochemical fractionation. Purity: >95% by SDS-PAGE.
克隆	单克隆
克隆编号	9A10AF10

同种型

IgG2a

轻链类型

kappa

应用

The Abpromise guarantee

Abpromise™承诺保证使用ab110311于以下的经测试应用

“应用说明”部分 下显示的仅为推荐的起始稀释度;实际最佳的稀释度/浓度应由使用者检定。

应用	Ab评论	说明
ICC/IF		Use a concentration of 5 µg/ml. For 2 hours.
IP		Use at an assay dependent concentration.

靶标

通路

Alcohol metabolism; ethanol degradation; acetate from ethanol: step 2/2.

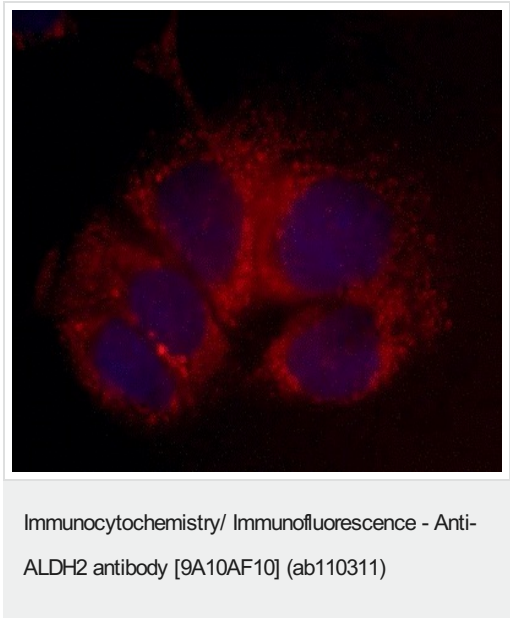
序列相似性

Belongs to the aldehyde dehydrogenase family.

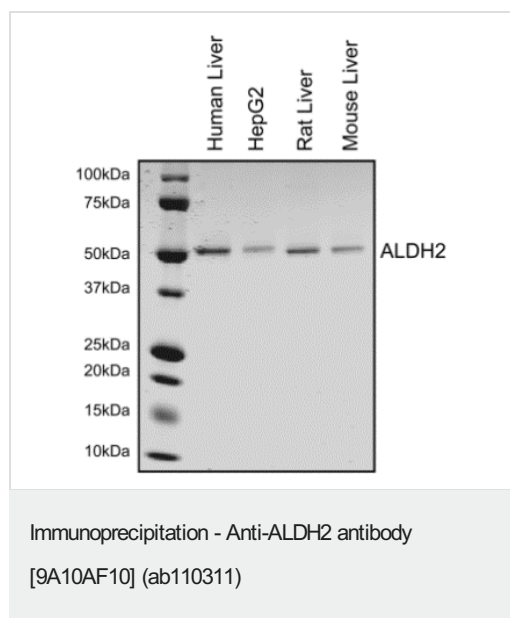
细胞定位

Mitochondrion matrix.

图片



Immunocytochemistry analysis using ab110311 at 5µg/ml staining ALDH2 in HepG2 cells (4% paraformaldehyde fixed and 0.1% Triton X-100 permeabilized) followed by Alexa Fluor® 594 goat anti-mouse IgG (H+L) used at a 1/1000 dilution for 1 hour (red). Note: Target protein locates mainly in the mitochondrial matrix.



Using MitoSciences' standard immunoprecipitation protocol, ab110311 precipitates down the 54kDa mature ALDH2 protein from human, mouse, and rat liver tissue lysate and HepG2 culture cell lysate. Identity of this protein was confirmed by mass spectrometry. This gel was stained with coomassie.

**Please note:** All products are "FOR RESEARCH USE ONLY. NOT FOR USE IN DIAGNOSTIC PROCEDURES"

### Our Abpromise to you: Quality guaranteed and expert technical support

- Replacement or refund for products not performing as stated on the datasheet
- Valid for 12 months from date of delivery
- Response to your inquiry within 24 hours
- We provide support in Chinese, English, French, German, Japanese and Spanish
- Extensive multi-media technical resources to help you
- We investigate all quality concerns to ensure our products perform to the highest standards

If the product does not perform as described on this datasheet, we will offer a refund or replacement. For full details of the Abpromise, please visit <https://www.abcam.cn/abpromise> or contact our technical team.

### Terms and conditions

- Guarantee only valid for products bought direct from Abcam or one of our authorized distributors