


Anti-ALDH1L2 antibody ab113496

3 References **2 图像**

概述

产品名称	Anti-ALDH1L2抗体
描述	兔多克隆抗体to ALDH1L2
宿主	Rabbit
经测试应用	适用于: WB, IHC-P
种属反应性	与反应: Human 预测可用于: Mouse, Rat 
免疫原	Recombinant fragment, corresponding to amino acids 2-247 of Human ALDH1L2 (BC103935).
阳性对照	Human Fetal Kidney, Human Fetal Heart, and Human Fetal Liver lysates, Human Fetal Heart tissue
常规说明	<p>The Life Science industry has been in the grips of a reproducibility crisis for a number of years. Abcam is leading the way in addressing this with our range of recombinant monoclonal antibodies and knockout edited cell lines for gold-standard validation. Please check that this product meets your needs before purchasing.</p> <p>If you have any questions, special requirements or concerns, please send us an inquiry and/or contact our Support team ahead of purchase. Recommended alternatives for this product can be found below, along with publications, customer reviews and Q&As</p>

性能

形式	Lyophilized:Reconstitute in 200ul sterile H2O.
存放说明	Shipped at 4°C. Upon delivery aliquot and store at -20°C. Avoid repeated freeze / thaw cycles.
存储溶液	pH: 7.20 Preservative: 0.02% Sodium azide Constituent: 1% BSA
纯度	Immunogen affinity purified
克隆	多克隆
同种型	IgG

应用

The Abpromise guarantee **Abpromise™**承诺保证使用ab113496于以下的经测试应用

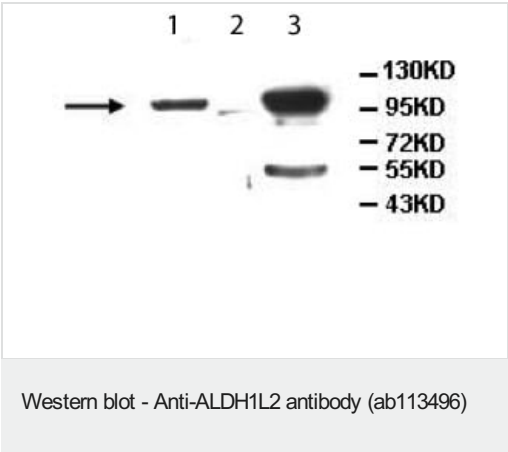
“应用说明”部分 下显示的仅为推荐的起始稀释度;实际最佳的稀释度/浓度应由使用者检定。

应用	Ab评论	说明
WB		1/1000 - 1/2000. Predicted molecular weight: 102 kDa.
IHC-P		1/100 - 1/500.

靶标

序列相似性	In the N-terminal section; belongs to the GART family. In the C-terminal section; belongs to the aldehyde dehydrogenase family. ALDH1L subfamily. Contains 1 acyl carrier domain.
-------	---

图片



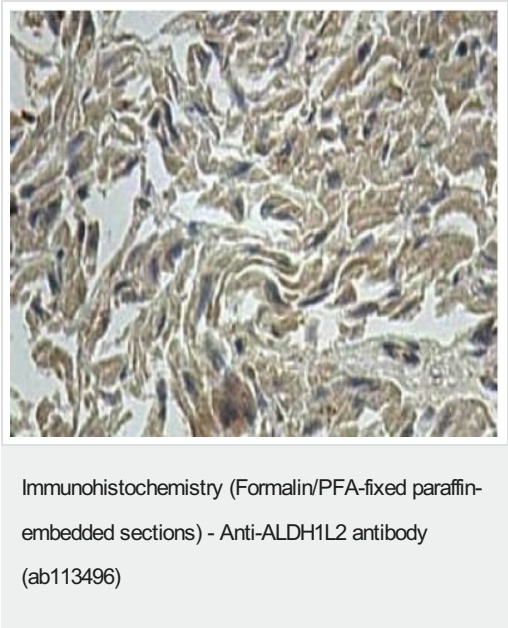
All lanes : Anti-ALDH1L2 antibody (ab113496) at 1/1000 dilution

Lane 1 : Human Fetal Kidney Lysate

Lane 2 : Human Fetal Heart Lysate

Lane 3 : Human Fetal Liver Lysate

Predicted band size: 102 kDa



Staining of Human ALDH1L2 in a Formalin/PFA-fixed paraffin-embedded section of Human Fetal Heart using ab113496 at a dilution of 1/100.

Please note: All products are "FOR RESEARCH USE ONLY. NOT FOR USE IN DIAGNOSTIC PROCEDURES"

Our Abpromise to you: Quality guaranteed and expert technical support

- Replacement or refund for products not performing as stated on the datasheet
- Valid for 12 months from date of delivery
- Response to your inquiry within 24 hours
- We provide support in Chinese, English, French, German, Japanese and Spanish
- Extensive multi-media technical resources to help you
- We investigate all quality concerns to ensure our products perform to the highest standards

If the product does not perform as described on this datasheet, we will offer a refund or replacement. For full details of the Abpromise, please visit <https://www.abcam.cn/abpromise> or contact our technical team.

Terms and conditions

- Guarantee only valid for products bought direct from Abcam or one of our authorized distributors