


# Anti-ALDH1L1 antibody ab226954

## 4 图像

### 概述

产品名称	Anti-ALDH1L1抗体
描述	兔多克隆抗体to ALDH1L1
宿主	Rabbit
经测试应用	适用于: WB, IHC-Fr
种属反应性	与反应: Mouse, Rat 预测可用于: Human, Rhesus monkey 
免疫原	Recombinant fragment within Human ALDH1L1 (internal sequence). The exact sequence is proprietary. Database link: <a href="#">O75891</a>
阳性对照	WB: Mouse and rat brain tissue extract. Mouse liver tissue extract. Rat kidney tissue extract. IHC-Fr: Adult mouse cerebellum tissue.
常规说明	<p>The Life Science industry has been in the grips of a reproducibility crisis for a number of years. Abcam is leading the way in addressing this with our range of recombinant monoclonal antibodies and knockout edited cell lines for gold-standard validation. Please check that this product meets your needs before purchasing.</p> <p>If you have any questions, special requirements or concerns, please send us an inquiry and/or contact our Support team ahead of purchase. Recommended alternatives for this product can be found below, along with publications, customer reviews and Q&amp;As</p>

### 性能

形式	Liquid
存放说明	Shipped at 4°C. Store at +4°C short term (1-2 weeks). Upon delivery aliquot. Store at -20°C long term. Avoid freeze / thaw cycle.
存储溶液	pH: 7.00 Preservative: 0.025% Proclin 300 Constituents: 79% PBS, 20% Glycerol (glycerin, glycerine)
纯度	Immunogen affinity purified
克隆	多克隆
同种型	IgG

应用

**The Abpromise guarantee**      **Abpromise™**承诺保证使用ab226954于以下的经测试应用

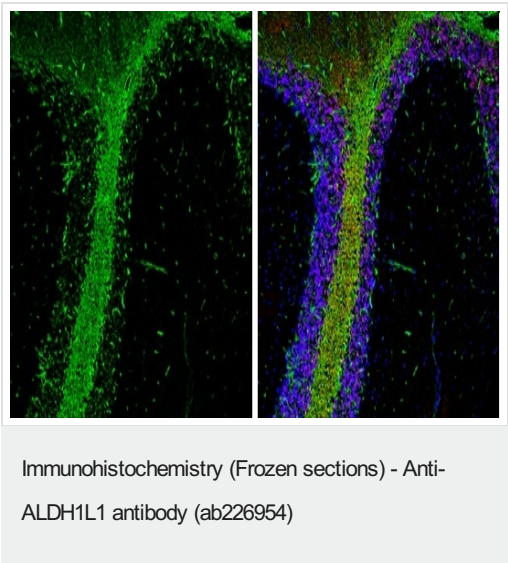
“应用说明”部分 下显示的仅为推荐的起始稀释度;实际最佳的稀释度/浓度应由使用者检定。

应用	Ab评论	说明
WB		1/500 - 1/10000. Predicted molecular weight: 99 kDa.
IHC-Fr		1/100 - 1/1000.

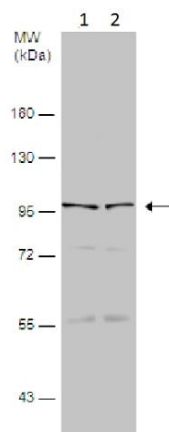
靶标

组织特异性	Highly expressed in liver, pancreas and kidney.
序列相似性	In the N-terminal section; belongs to the GART family. In the C-terminal section; belongs to the aldehyde dehydrogenase family. ALDH1L subfamily. Contains 1 acyl carrier domain.
细胞定位	Cytoplasm.

图片



Frozen sectioned adult mouse cerebellum stained for ALDH1L1 with ab226954 (1/250 dilution) (green) in immunohistochemical analysis. Counterstains: NeuN, stained by a NeuN antibody diluted at 1/500 (red). DAPI (blue).



Western blot - Anti-ALDH1L1 antibody (ab226954)

**All lanes** : Anti-ALDH1L1 antibody (ab226954) at 1/500 dilution

**Lane 1** : Mouse brain tissue extract

**Lane 2** : Rat brain tissue extract

Lysates/proteins at 50 µg per lane.

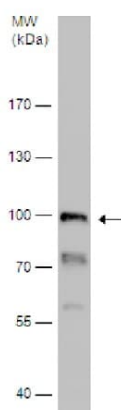
#### Secondary

**All lanes** : HRP-conjugated anti-rabbit IgG

Developed using the ECL technique.

**Predicted band size:** 99 kDa

7.5% SDS-PAGE



Western blot - Anti-ALDH1L1 antibody (ab226954)

Anti-ALDH1L1 antibody (ab226954) at 1/5000 dilution + Rat kidney tissue extracts at 50 µg

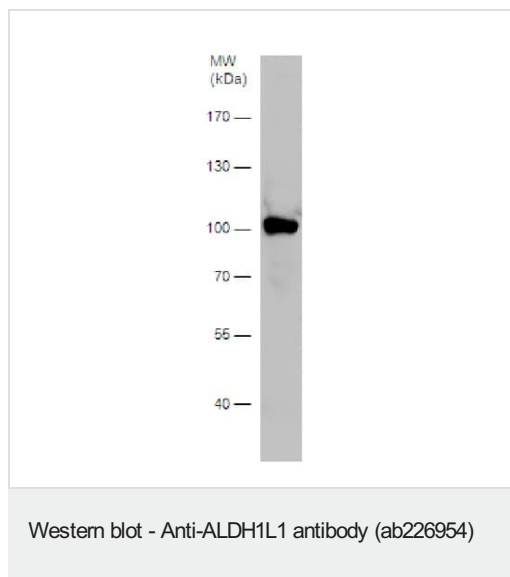
#### Secondary

HRP-conjugated anti-rabbit IgG

Developed using the ECL technique.

**Predicted band size:** 99 kDa

7.5% SDS-PAGE



Anti-ALDH1L1 antibody (ab226954) at 1/5000 dilution + Mouse liver tissue extracts at 50 µg

#### **Secondary**

HRP-conjugated anti-rabbit IgG

Developed using the ECL technique.

**Predicted band size:** 99 kDa

7.5% SDS-PAGE

**Please note:** All products are "FOR RESEARCH USE ONLY. NOT FOR USE IN DIAGNOSTIC PROCEDURES"

#### **Our Abpromise to you: Quality guaranteed and expert technical support**

---

- Replacement or refund for products not performing as stated on the datasheet
- Valid for 12 months from date of delivery
- Response to your inquiry within 24 hours
- We provide support in Chinese, English, French, German, Japanese and Spanish
- Extensive multi-media technical resources to help you
- We investigate all quality concerns to ensure our products perform to the highest standards

If the product does not perform as described on this datasheet, we will offer a refund or replacement. For full details of the Abpromise, please visit <https://www.abcam.cn/abpromise> or contact our technical team.

#### **Terms and conditions**

---

- Guarantee only valid for products bought direct from Abcam or one of our authorized distributors