

# Anti-ALDH1L1 + ALDH1L2 antibody [EPR12743(B)] - Astrocyte Marker ab177463

**重组** RabMAb

★★★★★ [1 Abreviews](#) [7 References](#) [8 图像](#)

## 概述

产品名称	Anti-ALDH1L1 + ALDH1L2抗体[EPR12743(B)] - Astrocyte Marker
描述	兔单克隆抗体[EPR12743(B)] to ALDH1L1+ALDH1L2 - Astrocyte Marker
宿主	Rabbit
经测试应用	<b>适用于:</b> IHC-P, WB, IHC-Fr <b>不适用于:</b> Flow Cyt or ICC/IF
种属反应性	<b>与反应:</b> Mouse, Rat, Human
免疫原	Synthetic peptide. This information is proprietary to Abcam and/or its suppliers.
阳性对照	HepG2, 293T, fetal brain, fetal kidney and fetal liver lysates. Human kidney and Human liver tissue. IHC-Fr: Mouse and rat liver tissue.
常规说明	This product is a recombinant monoclonal antibody, which offers several advantages including: <ul style="list-style-type: none"> <li>- High batch-to-batch consistency and reproducibility</li> <li>- Improved sensitivity and specificity</li> <li>- Long-term security of supply</li> <li>- Animal-free production</li> </ul> For more information <a href="#">see here</a> . Our RabMAb <sup>®</sup> technology is a patented hybridoma-based technology for making rabbit monoclonal antibodies. For details on our patents, please refer to <a href="#">RabMAb<sup>®</sup> patents</a> .

## 性能

形式	Liquid
存放说明	Shipped at 4°C. Store at +4°C short term (1-2 weeks). Upon delivery aliquot. Store at -20°C long term. Avoid freeze / thaw cycle.
存储溶液	pH: 7.20 Preservative: 0.01% Sodium azide Constituents: 9% PBS, 40% Glycerol (glycerin, glycerine), 0.05% BSA, 50% Tissue culture supernatant
纯度	Protein A purified

克隆

单克隆

克隆编号

EPR12743(B)

同种型

IgG

应用

The Abpromise guarantee

Abpromise™承诺保证使用ab177463于以下的经测试应用

“应用说明”部分 下显示的仅为推荐的起始稀释度;实际最佳的稀释度/浓度应由使用者检定。

应用	Ab评论	说明
IHC-P	★★★★★ (1)	1/50 - 1/100. Perform heat mediated antigen retrieval with citrate buffer pH 6 before commencing with IHC staining protocol.
WB		1/1000 - 1/10000. Predicted molecular weight: 99 kDa.
IHC-Fr		1/100.

应用说明

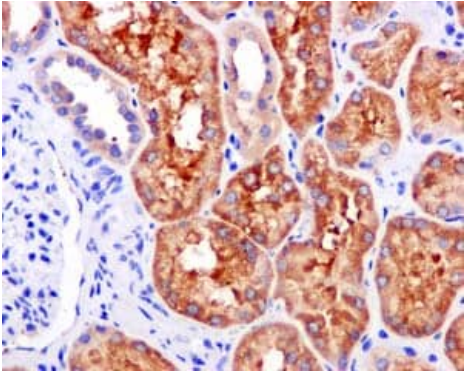
Is unsuitable for Flow Cyt or ICC/IF.

靶标

细胞定位

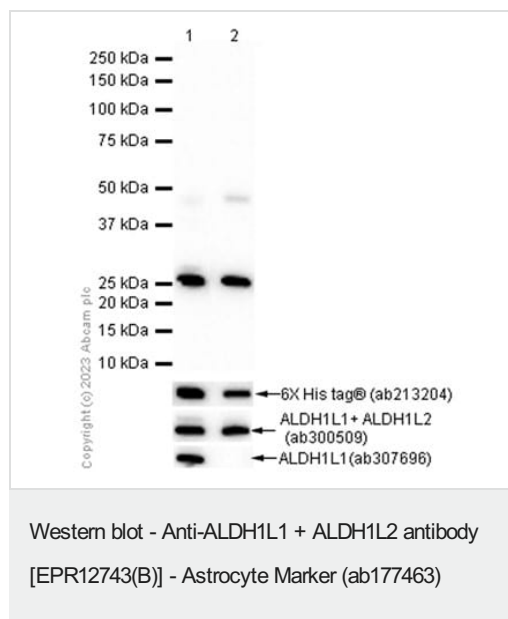
ALDH1L1: Cytoplasm.

图片



Immunohistochemistry (Formalin/PFA-fixed paraffin-embedded sections) - Anti-ALDH1L1+ALDH1L2 antibody [EPR12743(B)] - Astrocyte Marker (ab177463)

Immunohistochemical analysis of paraffin-embedded Human kidney tissue labeling ALDH1L1+ALDH1L2 with ab177463 at 1/50 dilution. Antigen retrieval was heat mediated with citrate buffer pH 6 before commencing with IHC staining protocol.



**All lanes** : Anti-ALDH1L1 + ALDH1L2 antibody [EPR12743(B)] - Astrocyte Marker (ab177463) at 1/1000 dilution

**Lane 1** : His-tagged mouse ALDH1L1 fragment recombinant protein (aa162-366)

**Lane 2** : His-tagged mouse ALDH1L2 fragment recombinant protein (aa184-387)

Lysates/proteins at 0.01 µg per lane.

### Secondary

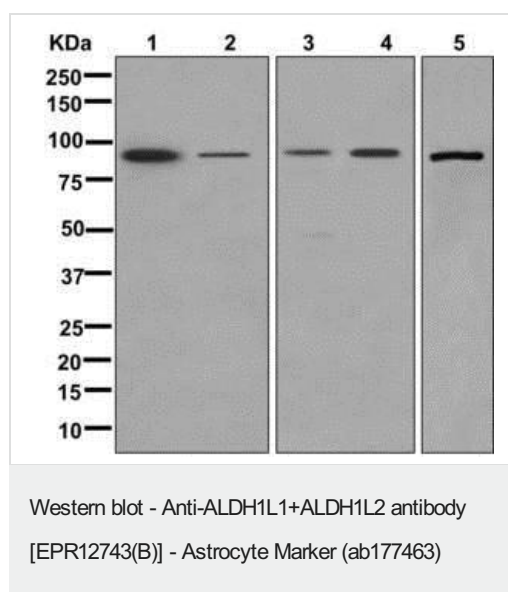
**All lanes** : Goat Anti-Rabbit IgG H&L (HRP) ([ab97051](#)) at 1/20000 dilution

**Predicted band size:** 99 kDa

**Observed band size:** 25 kDa

**Exposure time:** 20 seconds

Blocking/Diluting buffer and concentration: 5% NFDM/TBST



**All lanes** : Anti-ALDH1L1 + ALDH1L2 antibody [EPR12743(B)] - Astrocyte Marker (ab177463) at 1/1000 dilution

**Lane 1** : HepG2 lysate

**Lane 2** : 293T cell lysate

**Lane 3** : Fetal brain lysate

**Lane 4** : Fetal kidney lysate

**Lane 5** : Fetal liver lysate

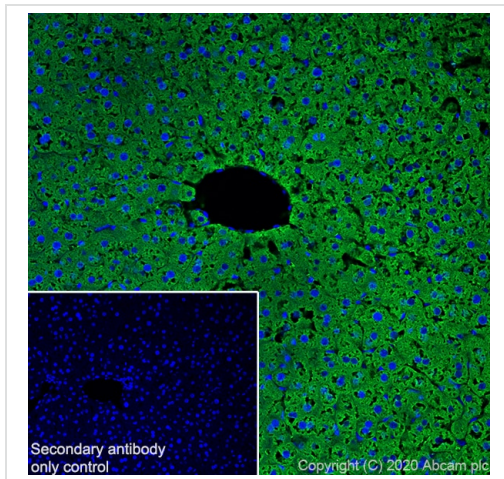
Lysates/proteins at 10 µg per lane.

### Secondary

**All lanes** : Goat-anti-rabbit HRP at 1/2000 dilution

Developed using the ECL technique.

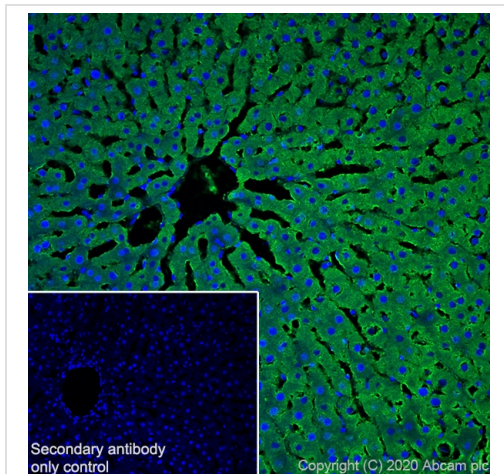
**Predicted band size:** 99 kDa



Immunohistochemistry (Frozen sections) - Anti-ALDH1L1+ALDH1L2 antibody [EPR12743(B)] - Astrocyte Marker (ab177463)

Immunohistochemistry (Frozen sections) analysis of mouse liver tissue labeling ALDH1L1+ALDH1L2 with ab177463 at 1/100 dilution. Tissue was fixed with 4% PFA and permeabilised with 0.2% Triton X-100. **ab150077**, Goat Anti-Rabbit IgG H&L (Alexa Fluor® 488) at 1/1000 dilution was used as the secondary antibody. DAPI (blue) was used as nucleare counterstain. Antigen retrieval was heat mediated using sodium citrate buffer (10mM citrate pH 6.0 + 0.05% Tween-20).

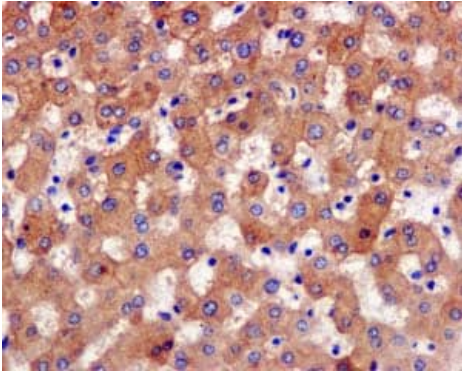
Cytoplasmic staining on mouse liver.



Immunohistochemistry (Frozen sections) - Anti-ALDH1L1+ALDH1L2 antibody [EPR12743(B)] - Astrocyte Marker (ab177463)

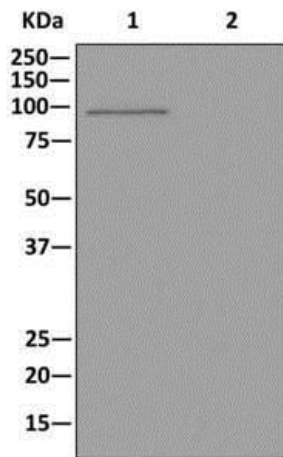
Immunohistochemistry (Frozen sections) analysis of rat liver tissue labeling ALDH1L1+ALDH1L2 with ab177463 at 1/100 dilution. Tissue was fixed with 4% PFA and permeabilised with 0.2% Triton X-100. **ab150077**, Goat Anti-Rabbit IgG H&L (Alexa Fluor® 488) at 1/1000 dilution was used as the secondary antibody. DAPI (blue) was used as nucleare counterstain. Antigen retrieval was heat mediated using sodium citrate buffer (10mM citrate pH 6.0 + 0.05% Tween-20).

Cytoplasmic staining on rat liver.



Immunohistochemistry (Formalin/PFA-fixed paraffin-embedded sections) - Anti-ALDH1L1+ALDH1L2 antibody [EPR12743(B)] - Astrocyte Marker (ab177463)

Immunohistochemical analysis of paraffin-embedded Human liver tissue labeling ALDH1L1+ALDH1L2 with ab177463 at 1/50 dilution. Antigen retrieval was heat mediated with citrate buffer pH 6 before commencing with IHC staining protocol.



Western blot - Anti-ALDH1L1+ALDH1L2 antibody [EPR12743(B)] - Astrocyte Marker (ab177463)

**All lanes** : Anti-ALDH1L1 + ALDH1L2 antibody [EPR12743(B)] - Astrocyte Marker (ab177463) at 1/1000 dilution

**Lane 1** : Fetal liver lysate at 10 µg

**Lane 2** : 1X PBS (negative control)

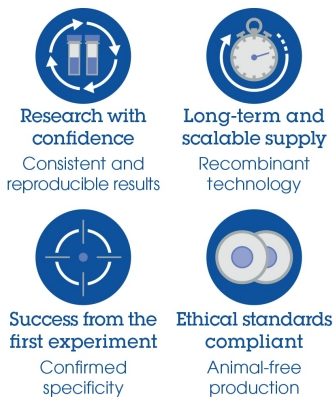
#### Secondary

**All lanes** : Goat-anti-rabbit HRP at 1/2000 dilution

Developed using the ECL technique.

**Predicted band size:** 99 kDa

#### Why choose a recombinant antibody?



Anti-ALDH1L1+ALDH1L2 antibody [EPR12743(B)] - Astrocyte Marker (ab177463)

**Please note:** All products are "FOR RESEARCH USE ONLY. NOT FOR USE IN DIAGNOSTIC PROCEDURES"

### **Our Abpromise to you: Quality guaranteed and expert technical support**

---

- Replacement or refund for products not performing as stated on the datasheet
- Valid for 12 months from date of delivery
- Response to your inquiry within 24 hours
  
- We provide support in Chinese, English, French, German, Japanese and Spanish
- Extensive multi-media technical resources to help you
- We investigate all quality concerns to ensure our products perform to the highest standards

If the product does not perform as described on this datasheet, we will offer a refund or replacement. For full details of the Abpromise, please visit <https://www.abcam.cn/abpromise> or contact our technical team.

### **Terms and conditions**

---

- Guarantee only valid for products bought direct from Abcam or one of our authorized distributors