

### Anti-Albumin antibody ab106582

★★★★☆ [11 Abreviews](#) [49 References](#) [4 图像](#)

#### 概述

---

产品名称	Anti-Albumin抗体
描述	鸡多克隆抗体to Albumin
宿主	Chicken
经测试应用	适用于: WB, IHC-P
种属反应性	与反应: Mouse, Human
免疫原	Synthetic peptide corresponding to Human Albumin (internal sequence). The immunogen is located within amino acids 340 - 390 of Albumin. Database link: <a href="#">P02768</a>
阳性对照	Mouse liver lysate; Human liver tissue
常规说明	Antibodies should not be exposed to prolonged high temperatures.  The Life Science industry has been in the grips of a reproducibility crisis for a number of years. Abcam is leading the way in addressing this with our range of recombinant monoclonal antibodies and knockout edited cell lines for gold-standard validation. Please check that this product meets your needs before purchasing.  If you have any questions, special requirements or concerns, please send us an inquiry and/or contact our Support team ahead of purchase. Recommended alternatives for this product can be found below, along with publications, customer reviews and Q&As

#### 性能

---

形式	Liquid
存放说明	Shipped at 4°C. Store at +4°C short term (1-2 weeks). Store at +4°C.
存储溶液	pH: 7.2 Preservative: 0.02% Sodium azide Constituent: PBS
纯度	Immunogen affinity purified
克隆	多克隆
同种型	IgY

#### 应用

## The Abpromise guarantee

**Abpromise™**承诺保证使用ab106582于以下的经测试应用

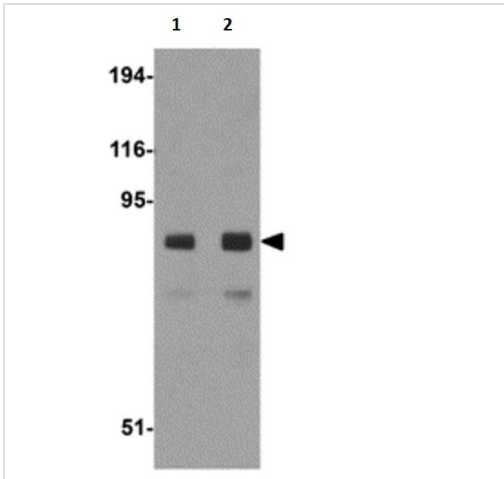
“应用说明”部分下显示的仅为推荐的起始稀释度;实际最佳的稀释度/浓度应由使用者检定。

应用	Ab评论	说明
WB		Use a concentration of 1 - 2 µg/ml. Predicted molecular weight: 69 kDa.
IHC-P	★★★★★ (7)	Use a concentration of 2.5 - 20 µg/ml.
IF		Use a concentration of 20 µg/ml.

## 靶标

功能	Serum albumin, the main protein of plasma, has a good binding capacity for water, Ca(2+), Na(+), K(+), fatty acids, hormones, bilirubin and drugs. Its main function is the regulation of the colloidal osmotic pressure of blood. Major zinc transporter in plasma, typically binds about 80% of all plasma zinc.
组织特异性	Plasma.
疾病相关	Defects in ALB are a cause of familial dysalbuminemic hyperthyroxinemia (FDH) [MIM:103600]. FDH is a form of euthyroid hyperthyroxinemia that is due to increased affinity of ALB for T(4). It is the most common cause of inherited euthyroid hyperthyroxinemia in Caucasian population.
序列相似性	Belongs to the ALB/AFP/VDB family. Contains 3 albumin domains.
翻译后修饰	Kenitra variant is partially O-glycosylated at Thr-620. It has two new disulfide bonds Cys-600 to Cys-602 and Cys-601 to Cys-606. Glycated in diabetic patients. Phosphorylation sites are present in the extracellular medium. Acetylated on Lys-223 by acetylsalicylic acid.
细胞定位	Secreted.
形式	There are 2 isoforms produced by alternative splicing.

## 图片



Western blot - Anti-Albumin antibody (ab106582)

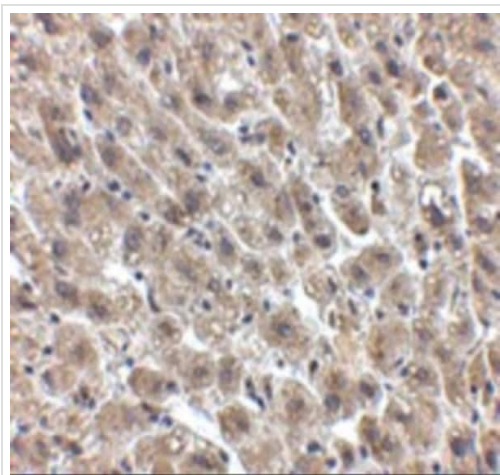
**Lane 1** : Anti-Albumin antibody (ab106582) at 1 µg/ml

**Lane 2** : Anti-Albumin antibody (ab106582) at 2 µg/ml

**All lanes** : Mouse liver tissue lysate

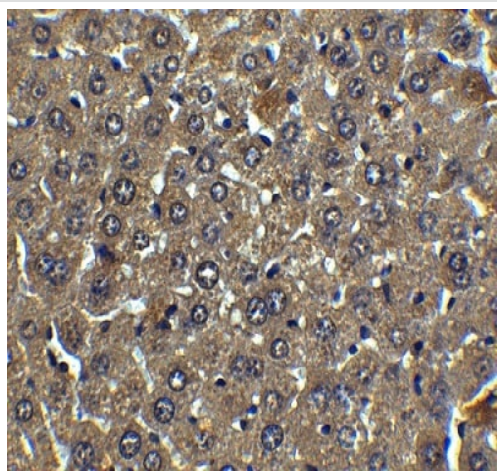
Lysates/proteins at 15 µg per lane.

**Predicted band size:** 69 kDa



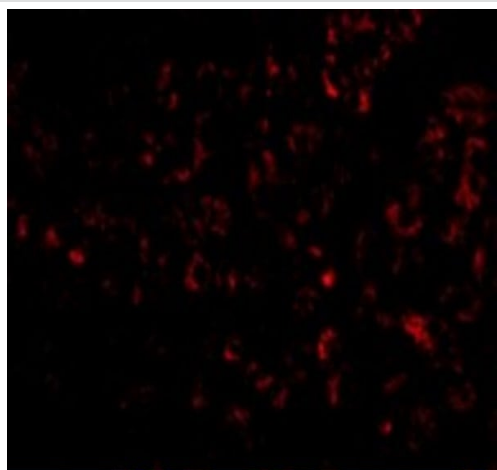
Immunohistochemistry (Formalin/PFA-fixed paraffin-embedded sections) - Anti-Albumin antibody (ab106582)

Immunohistochemical analysis of paraffin embedded Human liver tissue section labelling Albumin with ab106582 at 2.5 µg/ml.



Immunohistochemical analysis of paraffin embedded Mouse liver tissue section labelling Albumin with ab106582 at 5 µg/ml.

Immunohistochemistry (Formalin/PFA-fixed paraffin-embedded sections) - Anti-Albumin antibody (ab106582)



Immunofluorescence analysis of paraffin embedded mouse liver tissue section labelling Albumin with ab106582 at 20 µg/mL.

Immunofluorescence - Anti-Albumin antibody (ab106582)

**Please note:** All products are "FOR RESEARCH USE ONLY. NOT FOR USE IN DIAGNOSTIC PROCEDURES"

### **Our Promise to you: Quality guaranteed and expert technical support**

---

- Replacement or refund for products not performing as stated on the datasheet
- Valid for 12 months from date of delivery
- Response to your inquiry within 24 hours
- We provide support in Chinese, English, French, German, Japanese and Spanish

- Extensive multi-media technical resources to help you
- We investigate all quality concerns to ensure our products perform to the highest standards

If the product does not perform as described on this datasheet, we will offer a refund or replacement. For full details of the Abpromise, please visit <https://www.abcam.cn/abpromise> or contact our technical team.

### **Terms and conditions**

---

- Guarantee only valid for products bought direct from Abcam or one of our authorized distributors