

Anti-AKAP13/p47 antibody ab74048

2 图像

概述

产品名称	Anti-AKAP13/p47抗体
描述	兔多克隆抗体to AKAP13/p47
宿主	Rabbit
经测试应用	适用于: WB, IHC-P
种属反应性	与反应: Human
免疫原	Synthetic peptide corresponding to Human AKAP13/p47 (internal sequence).
常规说明	<p>The Life Science industry has been in the grips of a reproducibility crisis for a number of years. Abcam is leading the way in addressing this with our range of recombinant monoclonal antibodies and knockout edited cell lines for gold-standard validation. Please check that this product meets your needs before purchasing.</p> <p>If you have any questions, special requirements or concerns, please send us an inquiry and/or contact our Support team ahead of purchase. Recommended alternatives for this product can be found below, along with publications, customer reviews and Q&As</p>

性能

形式	Liquid
存放说明	Shipped at 4°C. Store at -20°C. Stable for 12 months at -20°C.
存储溶液	pH: 7.40 Preservative: 0.02% Sodium azide Constituents: 50% Glycerol (glycerin, glycerine), 0.87% Sodium chloride, PBS
纯度	Without Mg ²⁺ and Ca ²⁺ Immunogen affinity purified
克隆	多克隆
同种型	IgG

应用

The Abpromise guarantee

Abpromise™ 承诺保证使用ab74048于以下的经测试应用

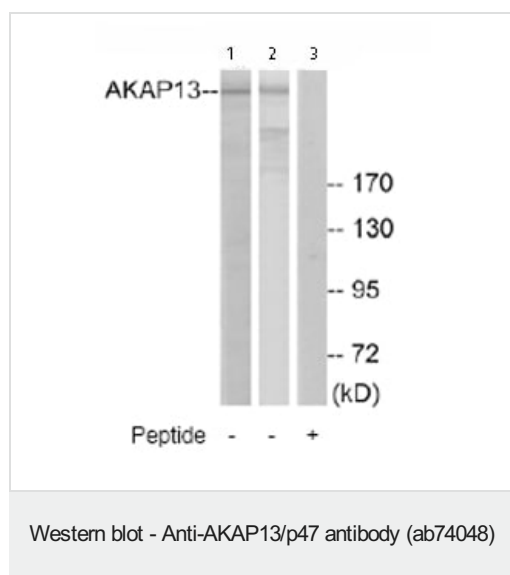
“应用说明”部分 下显示的仅为推荐的起始稀释度;实际最佳的稀释度/浓度应由使用者检定。

应用	Ab评论	说明
WB		1/500 - 1/1000. Predicted molecular weight: 308 kDa.
IHC-P		1/50 - 1/100.

靶标

功能	Anchors cAMP-dependent protein kinase (PKA) and acts as an adapter protein to selectively couple G alpha-13 and Rho. Augments gene activation by the estrogen receptor in an element-specific and ligand-dependent manner. Activates estrogen receptor beta by a p38 MAPK-dependent pathway. Isoform 6 stimulates exchange activity on Rho proteins in vitro, but not on CDC42, Ras or Rac and may bind calcium ions.
组织特异性	Isoform 3 and isoform 6 are found in hematopoietic cells, skeletal muscle, lung, heart, estrogen-responsive reproductive tissues, including breast ductal epithelium. Also found in testis and breast cancer cell lines. Isoform 6 is not found in brain, placenta, liver, pancreas or kidney. Isoform 7 is expressed in myeloid and lymphoid lineages, a variety of epithelial tissues and skeletal muscle. Isoform 2 is predominantly found in the heart and at lower levels in the lung, placenta, kidney, pancreas, skeletal muscle and liver.
序列相似性	Contains 1 DH (DBL-homology) domain. Contains 1 PH domain. Contains 1 phorbol-ester/DAG-type zinc finger.
结构域	Both the DH and PH domains are required for transforming activity.
细胞定位	Cytoplasm; Cytoplasm. Nucleus and Membrane.

图片



All lanes : Anti-AKAP13/p47 antibody (ab74048) at 1/500 dilution

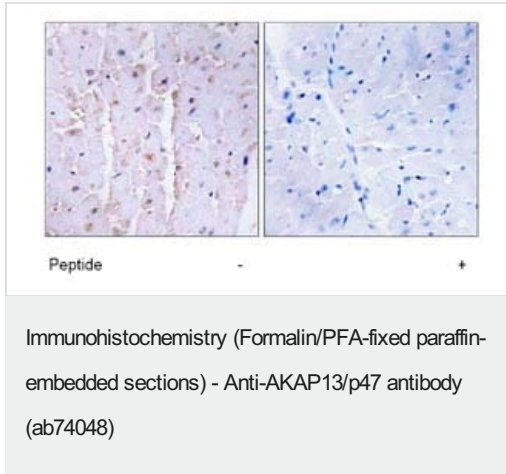
Lane 1 : Extracts from Jurkat cells

Lane 2 : Extracts from A549 cells

Lane 3 : Extracts from Jurkat cells with immunising peptide at 5 µg

Lysates/proteins at 5 µg per lane.

Predicted band size: 308 kDa



Immunohistochemistry analysis of paraffin-embedded human lung carcinoma tissue using ab74048, at 1/50 dilution, in the presence (right panel) or absence (left panel) of immunising peptide.

Please note: All products are "FOR RESEARCH USE ONLY. NOT FOR USE IN DIAGNOSTIC PROCEDURES"

Our Abpromise to you: Quality guaranteed and expert technical support

- Replacement or refund for products not performing as stated on the datasheet
- Valid for 12 months from date of delivery
- Response to your inquiry within 24 hours
- We provide support in Chinese, English, French, German, Japanese and Spanish
- Extensive multi-media technical resources to help you
- We investigate all quality concerns to ensure our products perform to the highest standards

If the product does not perform as described on this datasheet, we will offer a refund or replacement. For full details of the Abpromise, please visit <https://www.abcam.cn/abpromise> or contact our technical team.

Terms and conditions

- Guarantee only valid for products bought direct from Abcam or one of our authorized distributors