


# Anti-AKAP 95 antibody ab72196

**2 References**   **3 图像**

### 概述

产品名称	Anti-AKAP 95抗体
描述	兔多克隆抗体to AKAP 95
宿主	Rabbit
经测试应用	适用于: WB, IP, IHC-P
种属反应性	与反应: Mouse, Human 预测可用于: Cow, Chimpanzee, Gorilla 
免疫原	Synthetic peptide corresponding to Human AKAP 95 aa 642-692 (C terminal). Database link: <a href="#">NP_005849.1</a>
阳性对照	HeLa and 293T whole cell lysates
常规说明	<p>The Life Science industry has been in the grips of a reproducibility crisis for a number of years. Abcam is leading the way in addressing this with our range of recombinant monoclonal antibodies and knockout edited cell lines for gold-standard validation. Please check that this product meets your needs before purchasing.</p> <p>If you have any questions, special requirements or concerns, please send us an inquiry and/or contact our Support team ahead of purchase. Recommended alternatives for this product can be found below, along with publications, customer reviews and Q&amp;As</p>

### 性能

形式	Liquid
存放说明	Shipped at 4°C. Upon delivery aliquot and store at -20°C. Avoid freeze / thaw cycles.
存储溶液	pH: 6.8 Preservative: 0.09% Sodium azide Constituents: 0.1% BSA, Tris buffered saline
纯度	Immunogen affinity purified
克隆	多克隆
同种型	IgG

### 应用

The Abpromise guarantee

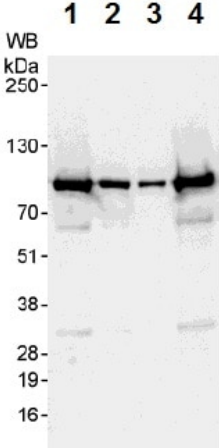
Abpromise™承诺保证使用ab72196于以下的经测试应用

“应用说明”部分 下显示的仅为推荐的起始稀释度;实际最佳的稀释度/浓度应由使用者检定。

应用	Ab评论	说明
WB		1/2000 - 1/10000. Detects a band of approximately 86 kDa (predicted molecular weight: 76 kDa).
IP		Use at 2-5 µg/mg of lysate.
IHC-P		1/200 - 1/1000. Perform heat mediated antigen retrieval with citrate buffer pH 6 before commencing with IHC staining protocol.

靶标	
功能	Anchoring protein that mediates the subcellular compartmentation of cAMP-dependent protein kinase (PKA type II).
组织特异性	Highly expressed in heart, liver, skeletal muscle, kidney and pancreas.
序列相似性	Belongs to the AKAP95 family. Contains 2 C2H2 AKAP95-type zinc fingers.
细胞定位	Nucleus matrix. Associated with the nuclear matrix. Redistributed and detached from condensed chromatin during mitosis.

图片



Western blot - Anti-AKAP 95 antibody (ab72196)

**All lanes :** Anti-AKAP 95 antibody (ab72196) at 0.04 µg/ml

**Lane 1 :** HeLa whole cell lysate at 50 µg

**Lane 2 :** HeLa whole cell lysate at 15 µg

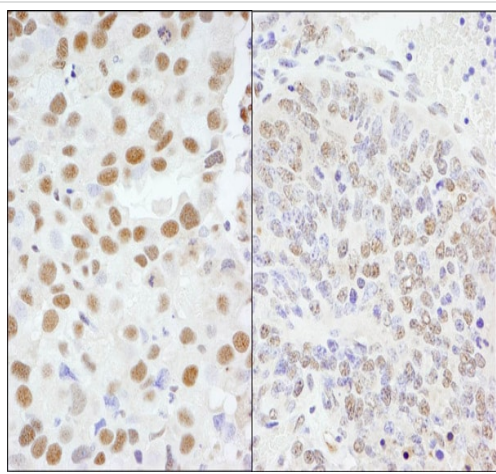
**Lane 3 :** HeLa whole cell lysate at 5 µg

**Lane 4 :** 293T whole cell lysate at 50 µg

Developed using the ECL technique.

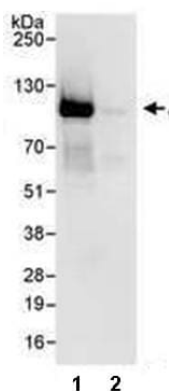
**Predicted band size:** 76 kDa

**Exposure time:** 3 minutes



Immunohistochemistry (Formalin/PFA-fixed paraffin-embedded sections) - Anti-AKAP 95 antibody (ab72196)

Immunohistochemistry (Formalin/PFA-fixed paraffin-embedded sections) analysis of human breast carcinoma (left) and mouse teratoma (right) tissues labelling AKAP 95 with ab72196 at 1/1000 (0.2µg/ml) and 1/200 (1µg/ml). Detection: DAB.



Immunoprecipitation - Anti-AKAP 95 antibody (ab72196)

Immunoprecipitation of HeLa whole cell lysate (1 mg) using ab72196 at 3 µg/mg lysate. 20% of the immunoprecipitate was used for Western blot and bands were detected using ab72196 at 1 µg/ml. Bands were developed using chemiluminescence with an exposure time of 3 seconds. Lane 2 represents a Control IgG.

**Please note:** All products are "FOR RESEARCH USE ONLY. NOT FOR USE IN DIAGNOSTIC PROCEDURES"

### Our Abpromise to you: Quality guaranteed and expert technical support

- Replacement or refund for products not performing as stated on the datasheet
- Valid for 12 months from date of delivery
- Response to your inquiry within 24 hours

- We provide support in Chinese, English, French, German, Japanese and Spanish
- Extensive multi-media technical resources to help you
- We investigate all quality concerns to ensure our products perform to the highest standards

If the product does not perform as described on this datasheet, we will offer a refund or replacement. For full details of the Abpromise, please visit <https://www.abcam.cn/abpromise> or contact our technical team.

#### **Terms and conditions**

---

- Guarantee only valid for products bought direct from Abcam or one of our authorized distributors