

Anti-AHSG antibody ab112528

[5 References](#) [1 图像](#)

概述

产品名称	Anti-AHSG抗体
描述	兔多克隆抗体to AHSG
宿主	Rabbit
经测试应用	适用于: WB
种属反应性	与反应: Human 预测可用于: Mouse, Rat 
免疫原	A synthetic peptide corresponding to a sequence at the N-terminal of Human Alpha 2 HS Glycoprotein.
常规说明	<p>The Life Science industry has been in the grips of a reproducibility crisis for a number of years. Abcam is leading the way in addressing this with our range of recombinant monoclonal antibodies and knockout edited cell lines for gold-standard validation. Please check that this product meets your needs before purchasing.</p> <p>If you have any questions, special requirements or concerns, please send us an inquiry and/or contact our Support team ahead of purchase. Recommended alternatives for this product can be found below, along with publications, customer reviews and Q&As</p>

性能

形式	Liquid
存放说明	Shipped at 4°C. Store at +4°C short term (1-2 weeks). Upon delivery aliquot. Store at -20°C long term.
存储溶液	Preservatives: 0.025% Thimerosal (merthiolate), 0.025% Sodium azide Constituents: 2.5% BSA, 0.45% Sodium chloride, 0.1% Dibasic monohydrogen sodium phosphate
纯度	Protein A purified
克隆	多克隆
同种型	IgG

应用

The Abpromise guarantee

Abpromise™承诺保证使用ab112528于以下的经测试应用

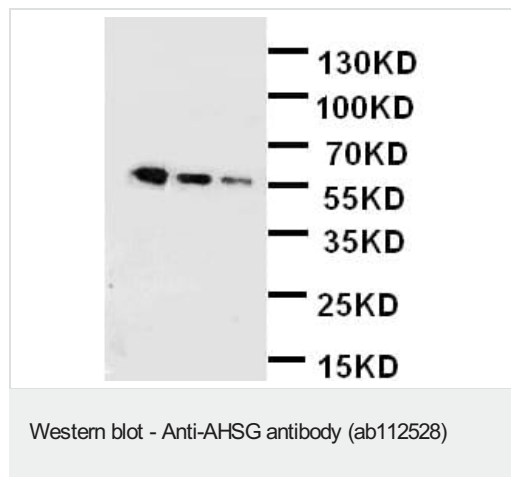
“应用说明”部分下显示的仅为推荐的起始稀释度;实际最佳的稀释度/浓度应由使用者检定。

应用	Ab评论	说明
WB		Use a concentration of 1 µg/ml. Predicted molecular weight: 39 kDa. The detection limit for Alpha 2 HS Glycoprotein is approximately 2.5ng/lane. under non-reducing and reducing conditions.

靶标

功能	Promotes endocytosis, possesses opsonic properties and influences the mineral phase of bone. Shows affinity for calcium and barium ions.
组织特异性	Synthesized in liver and selectively concentrated in bone matrix. Secreted in plasma. It is also found in dentin in much higher quantities than other plasma proteins.
序列相似性	Belongs to the fetuin family. Contains 2 cystatin fetuin-A-type domains.
翻译后修饰	Phosphorylation sites are present in the extracellular medium.
细胞定位	Secreted.

图片



All lanes : Anti-AHSG antibody (ab112528)

Lane 1 : Recombinant Human Alpha 2 HS Glycoprotein protein at 0.01 µg

Lane 2 : Recombinant Human Alpha 2 HS Glycoprotein protein at 0.005 µg

Lane 3 : Recombinant Human Alpha 2 HS Glycoprotein protein at 0.0025 µg

Predicted band size: 39 kDa

Please note: All products are "FOR RESEARCH USE ONLY. NOT FOR USE IN DIAGNOSTIC PROCEDURES"

Our Abpromise to you: Quality guaranteed and expert technical support

- Replacement or refund for products not performing as stated on the datasheet
- Valid for 12 months from date of delivery
- Response to your inquiry within 24 hours
- We provide support in Chinese, English, French, German, Japanese and Spanish

- Extensive multi-media technical resources to help you
- We investigate all quality concerns to ensure our products perform to the highest standards

If the product does not perform as described on this datasheet, we will offer a refund or replacement. For full details of the Abpromise, please visit <https://www.abcam.cn/abpromise> or contact our technical team.

Terms and conditions

- Guarantee only valid for products bought direct from Abcam or one of our authorized distributors