

# Anti-ADAMTS16 antibody ab45048

[4 References](#) [1 图像](#)

### 概述

---

产品名称	Anti-ADAMTS16抗体
描述	兔多克隆抗体to ADAMTS16
宿主	Rabbit
经测试应用	适用于: WB
种属反应性	与反应: Mouse
免疫原	Synthetic peptide based on the propeptide region of human ADAMTS-16. 参阅Abcam的专有抗原政策(Peptide available as <a href="#">ab45246</a> .)
常规说明	<p>We have a range of domain specific antibodies for this target. For a full list please <a href="#">see all ADAMTS16 antibodies</a>.</p> <p>The Life Science industry has been in the grips of a reproducibility crisis for a number of years. Abcam is leading the way in addressing this with our range of recombinant monoclonal antibodies and knockout edited cell lines for gold-standard validation. Please check that this product meets your needs before purchasing.</p> <p>If you have any questions, special requirements or concerns, please send us an inquiry and/or contact our Support team ahead of purchase. Recommended alternatives for this product can be found below, along with publications, customer reviews and Q&amp;As</p>

### 性能

---

形式	Liquid
存放说明	Shipped at 4°C. Store at -20°C. Stable for 12 months at -20°C.
存储溶液	pH: 7.40 Preservative: 0.05% Sodium azide Constituents: PBS, 50% Glycerol, 2.9% Sodium chloride
纯度	Immunogen affinity purified
克隆	多克隆
同种型	IgG

### 应用

---

## The Abpromise guarantee

**Abpromise™** 承诺保证使用 ab45048 于以下的经测试应用

“应用说明”部分 下显示的仅为推荐的起始稀释度；实际最佳的稀释度/浓度应由使用者检定。

应用	Ab评论	说明
WB		

### 应用说明

WB: 1/1000 - 1/5000. Predicted molecular weight: 136 kDa. The recommended starting concentration for Western blots is 1:1,000 when using colorimetric substrates such as BCIP/NBT, and 1:5,000 for chemiluminescent substrates. Dilution optimised using Chromogenic detection. Not yet tested in other applications. Optimal dilutions/concentrations should be determined by the end user.

### 靶标

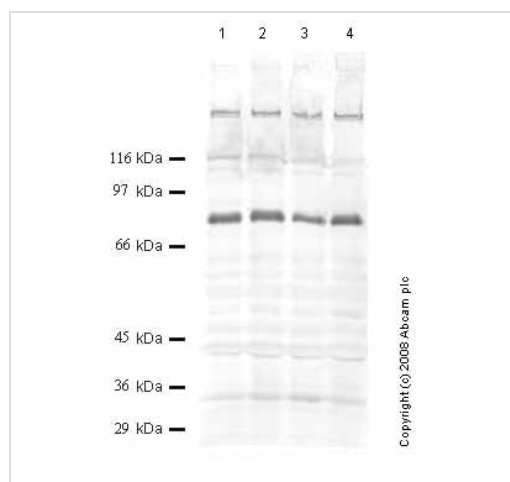
### 相关性

ADAMTS16 is a member of the ADAMs family of proteinases with 4 thrombospondin-like domains. ADAMTS16 is closest in homology to ADAMTS18, sharing 57% overall identity. ADAMTS16 is expressed in fetal human lung and kidney, and in adult brain and ovary as well as in osteoarthritic cartilage, prostate and breast tissue. ADAMTS16 contains a prohormone-convertase cleavage site; the predicted PC cleavage site is the RRRR87 sequence in the 1224 and 1072 amino acid forms. This catalytic site is typical of the metalloproteinase catalytic domains, with an HExxHxxxxH sequence. Several splice variants of ADAMTS16 have been reported.

### 细胞定位

Secreted

### 图片



Western blot - Anti-ADAMTS16 antibody (ab45048)

**All lanes :** Anti-ADAMTS16 antibody (ab45048) at 1/1000 dilution

**Lane 1 :** Whole cell lysate prepared from mouse lung mesenchymal MLg cells (treated with SF)

**Lane 2 :** Whole cell lysate prepared from mouse lung mesenchymal MLg cells (treated with TPA)

**Lane 3 :** Whole cell lysate prepared from mouse lung mesenchymal MLg cells (treated with IL1-alpha)

**Lane 4 :** Whole cell lysate prepared from mouse lung mesenchymal MLg cells (treated with RA)

**Predicted band size:** 136 kDa

Several different splice variants of ADAMTS-16 have been reported: 151.38 kDa, 136.2 kDa and 119.5 kDa. Two shorter versions of 62kDa and 56kDa are also reported, lacking the MP domain.

**Please note:** All products are "FOR RESEARCH USE ONLY. NOT FOR USE IN DIAGNOSTIC PROCEDURES"

### **Our Abpromise to you: Quality guaranteed and expert technical support**

---

- Replacement or refund for products not performing as stated on the datasheet
- Valid for 12 months from date of delivery
- Response to your inquiry within 24 hours
  
- We provide support in Chinese, English, French, German, Japanese and Spanish
- Extensive multi-media technical resources to help you
- We investigate all quality concerns to ensure our products perform to the highest standards

If the product does not perform as described on this datasheet, we will offer a refund or replacement. For full details of the Abpromise, please visit <https://www.abcam.cn/abpromise> or contact our technical team.

### **Terms and conditions**

---

- Guarantee only valid for products bought direct from Abcam or one of our authorized distributors