

### Anti-ADAM9 antibody ab186833

★★★★★ [2 Abreviews](#) [15 References](#) [3 图像](#)

#### 概述

产品名称	Anti-ADAM9抗体
描述	兔多克隆抗体to ADAM9
宿主	Rabbit
经测试应用	适用于: ICC/IF, WB, IHC-P
种属反应性	与反应: Mouse, Human
免疫原	Recombinant fragment corresponding to Human ADAM9 aa 475-685 (internal sequence). Database link: <a href="#">Q13443</a>
阳性对照	Mouse kidney and liver extracts.
常规说明	<p>The Life Science industry has been in the grips of a reproducibility crisis for a number of years. Abcam is leading the way in addressing this with our range of recombinant monoclonal antibodies and knockout edited cell lines for gold-standard validation. Please check that this product meets your needs before purchasing.</p> <p>If you have any questions, special requirements or concerns, please send us an inquiry and/or contact our Support team ahead of purchase. Recommended alternatives for this product can be found below, along with publications, customer reviews and Q&amp;As</p>

#### 性能

形式	Liquid
存放说明	Shipped at 4°C. Store at +4°C short term (1-2 weeks). Upon delivery aliquot. Store at -20°C long term. Avoid freeze / thaw cycle.
存储溶液	pH: 7.30 Preservative: 0.02% Sodium azide Constituents: 49% PBS, 50% Glycerol
纯度	Immunogen affinity purified
克隆	多克隆
同种型	IgG

#### 应用

The Abpromise guarantee

Abpromise™承诺保证使用ab186833于以下的经测试应用

“应用说明”部分 下显示的仅为推荐的起始稀释度;实际最佳的稀释度/浓度应由使用者检定。

应用	Ab评论	说明
ICC/IF		Use at an assay dependent concentration.
WB		1/500 - 1/2000. Predicted molecular weight: 91 kDa.
IHC-P		1/50 - 1/200.

靶标

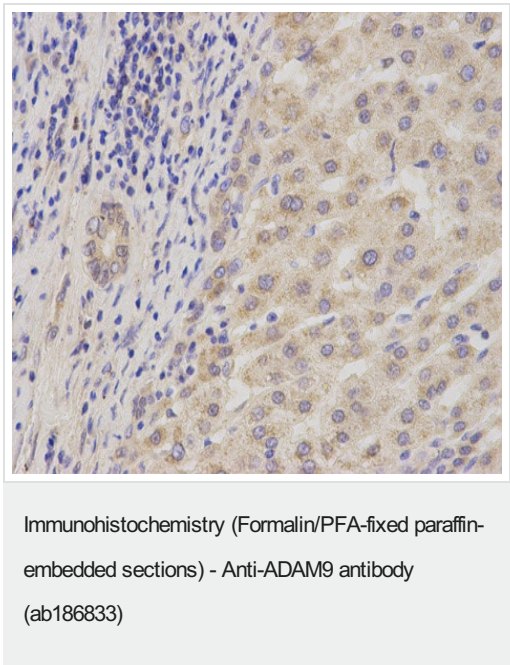
相关性

ADAM9 encodes disintegrin and metalloprotease (ADAM) domain 9, which is a member of the ADAM protein family. Members of this family are membrane- anchored proteins structurally related to snake venom disintegrins, and have been implicated in a variety of biologic processes involving cell- cell and cell-matrix interactions, including fertilization, muscle development, and neurogenesis. The member encoded by this gene interacts with SH3 domain-containing proteins, binds mitotic arrest deficient 2 beta protein, and is also involved in TPA-induced ectodomain shedding of membrane-anchored heparin-binding EGF-like growth factor.

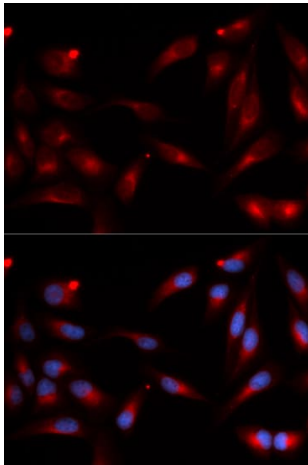
细胞定位

Isoform 1: Cell membrane; single-pass type I membrane protein. Isoform 2: Secreted protein.

图片

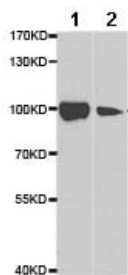


Immunohistochemistry (Formalin/PFA-fixed paraffin-embedded sections) analysis of human liver cancer tissue labelling ADAM9 with ab186833 at 1/200. Magnification: 400x.



Immunocytochemistry/Immunofluorescence analysis of U2OS cells using ab186833. Blue DAPI for nuclear staining.

Immunocytochemistry/ Immunofluorescence - Anti-ADAM9 antibody (ab186833)



**All lanes :** Anti-ADAM9 antibody (ab186833) at 1/500 dilution

**Lane 1 :** Mouse kidney extract

**Lane 2 :** Mouse liver extract

**Predicted band size:** 91 kDa

Western blot - Anti-ADAM9 antibody (ab186833)

**Please note:** All products are "FOR RESEARCH USE ONLY. NOT FOR USE IN DIAGNOSTIC PROCEDURES"

### Our Abpromise to you: Quality guaranteed and expert technical support

- Replacement or refund for products not performing as stated on the datasheet
- Valid for 12 months from date of delivery
- Response to your inquiry within 24 hours
- We provide support in Chinese, English, French, German, Japanese and Spanish
- Extensive multi-media technical resources to help you
- We investigate all quality concerns to ensure our products perform to the highest standards

If the product does not perform as described on this datasheet, we will offer a refund or replacement. For full details of the Abpromise, please visit <https://www.abcam.cn/abpromise> or contact our technical team.

## Terms and conditions

---

- Guarantee only valid for products bought direct from Abcam or one of our authorized distributors