

Anti-ADAM23 antibody - Cytoplasmic domain ab28302

★★★★ 4 Abreviews 2 References 2 图像

概述

产品名称	Anti-ADAM23抗体-细胞质domain
描述	兔多克隆抗体to ADAM23
宿主	Rabbit
经测试应用	适用于: WB, ICC/IF
种属反应性	与反应: Rat, Human
免疫原	Synthetic peptide corresponding to Human ADAM23. Corresponding to the cytoplasmic domain of human ADAM23. Database link: Q75077
阳性对照	ICC: PC12 cells. WB: Human brain tissue lysate. Rat cortex tissue lysate. Human brain amygdala tissue lysate (Alzheimer) membrane extract.
常规说明	<p>The Life Science industry has been in the grips of a reproducibility crisis for a number of years. Abcam is leading the way in addressing this with our range of recombinant monoclonal antibodies and knockout edited cell lines for gold-standard validation. Please check that this product meets your needs before purchasing.</p> <p>If you have any questions, special requirements or concerns, please send us an inquiry and/or contact our Support team ahead of purchase. Recommended alternatives for this product can be found below, along with publications, customer reviews and Q&As</p>

性能

形式	Liquid
存放说明	Shipped at 4°C. Store at +4°C short term (1-2 weeks). Upon delivery aliquot. Store at -20°C long term.
存储溶液	pH: 7.40 Preservative: 0.05% Sodium azide Constituents: PBS, 50% Glycerol, 2.9% Sodium chloride
纯度	Immunogen affinity purified
克隆	多克隆
同种型	IgG

应用

The Abpromise guarantee **Abpromise™**承诺保证使用ab28302于以下的经测试应用

“应用说明”部分 下显示的仅为推荐的起始稀释度;实际最佳的稀释度/浓度应由使用者检定。

应用	Ab评论	说明
WB	★★★★☆ (2)	Use at an assay dependent dilution. Detects a band of approximately 75 kDa (predicted molecular weight: 92 kDa). 1/1000 when using colorimetric substrates such as BCIP/NBT - 1/5000 for chemiluminescent substrates. EDTA/EGTA treatment of tissues or lysates is required to see latent zymogen.
ICC/IF	★★★★☆ (1)	Use a concentration of 1 µg/ml.

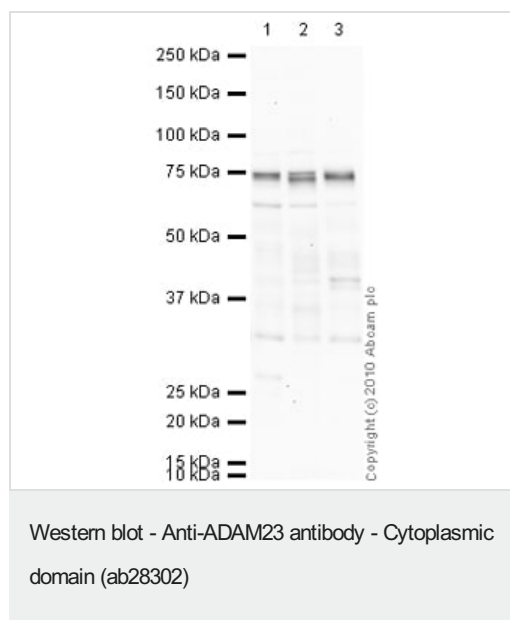
靶标

相关性	ADAM23 is a non-catalytic metalloprotease-like protein. It is highly expressed in the brain, primarily in the amygdala, caudate nucleus, hypothalamus, thalamus, cerebral cortex and occipital pole, and weakly expressed in the heart. 3 isoforms are produced by alternative splicing, alpha, beta and gamma. ADAM23 may play a role in cell-cell and cell-matrix interactions.
细胞定位	Single pass type I membrane protein. 3 isoforms produced by alternative splicing, gamma isoform is secreted.

图片

Immunocytochemistry/ Immunofluorescence - Anti-ADAM23 antibody - Cytoplasmic domain (ab28302)

ICC/IF image of ab28302 stained PC12 cells. The cells were 4% formaldehyde fixed (10 min) and then incubated in 1% BSA / 10% normal goat serum / 0.3M glycine in 0.1% PBS-Tween for 1h to permeabilize the cells and block non-specific protein-protein interactions. The cells were then incubated with the antibody (ab28302, 1 µg/ml) overnight at +4°C. The secondary antibody (green) was Alexa Fluor® 488 goat anti-rabbit IgG (H+L) used at a 1/1000 dilution for 1h. Alexa Fluor® 594 WGA was used to label plasma membranes (red) at a 1/200 dilution for 1h. DAPI was used to stain the cell nuclei (blue) at a concentration of 1.43 µM.



All lanes : Anti-ADAM23 antibody - Cytoplasmic domain (ab28302) at 1 µg/ml

Lane 1 : Human brain tissue lysate - total protein ([ab29466](#))

Lane 2 : Rat Cortex Tissue Lysate

Lane 3 : Human brain amygdala tissue lysate (alzheimer) - membrane extract ([ab30118](#))

Lysates/proteins at 10 µg per lane.

Secondary

All lanes : Goat Anti-Rabbit IgG H&L (HRP) preadsorbed ([ab97080](#)) at 1/5000 dilution

Developed using the ECL technique.

Performed under reducing conditions.

Predicted band size: 92 kDa

Observed band size: 75 kDa

Additional bands at: 33 kDa, 68 kDa. We are unsure as to the identity of these extra bands.

Exposure time: 8 minutes

The bands observed at 75 kDa could potentially be a cleaved form of ADAM23 due to the presence of a signal peptide and propeptide.

Please note: All products are "FOR RESEARCH USE ONLY. NOT FOR USE IN DIAGNOSTIC PROCEDURES"

Our Abpromise to you: Quality guaranteed and expert technical support

- Replacement or refund for products not performing as stated on the datasheet

- Valid for 12 months from date of delivery
- Response to your inquiry within 24 hours
- We provide support in Chinese, English, French, German, Japanese and Spanish
- Extensive multi-media technical resources to help you
- We investigate all quality concerns to ensure our products perform to the highest standards

If the product does not perform as described on this datasheet, we will offer a refund or replacement. For full details of the Abpromise, please visit <https://www.abcam.cn/abpromise> or contact our technical team.

Terms and conditions

- Guarantee only valid for products bought direct from Abcam or one of our authorized distributors