

# Anti-ADAM17 antibody ab39163

★★★★★ [16 Abreviews](#) [26 References](#) [1 图像](#)

## 概述

产品名称	Anti-ADAM17抗体
描述	兔多克隆抗体to ADAM17
宿主	Rabbit
特异性	This antibody recognizes ADAM17, but does not react with other ADAMs. ab39163 reacts with an epitope located in the activation site (cysteine switch and furin cleavage site) of ADAM17.
经测试应用	<b>适用于:</b> IHC-P
种属反应性	<b>与反应:</b> Human
免疫原	Synthetic peptide based on the activation site (cysteine switch and furin cleavage site) of human ADAM17. 参阅Abcam的 <a href="#">专有抗源政策</a> (Peptide available as <a href="#">ab41215</a> .)
常规说明	<p>The Life Science industry has been in the grips of a reproducibility crisis for a number of years. Abcam is leading the way in addressing this with our range of recombinant monoclonal antibodies and knockout edited cell lines for gold-standard validation. Please check that this product meets your needs before purchasing.</p> <p>If you have any questions, special requirements or concerns, please send us an inquiry and/or contact our Support team ahead of purchase. Recommended alternatives for this product can be found below, along with publications, customer reviews and Q&amp;As</p>

## 性能

形式	Liquid
存放说明	Shipped at 4°C. Store at +4°C short term (1-2 weeks). Upon delivery aliquot. Store at -20°C long term.
存储溶液	Preservative: 0.01% Sodium azide Constituent: 50% Glycerol
纯度	Immunogen affinity purified
克隆	多克隆
同种型	IgG

## 应用

The Abpromise guarantee

Abpromise™承诺保证使用ab39163于以下的经测试应用

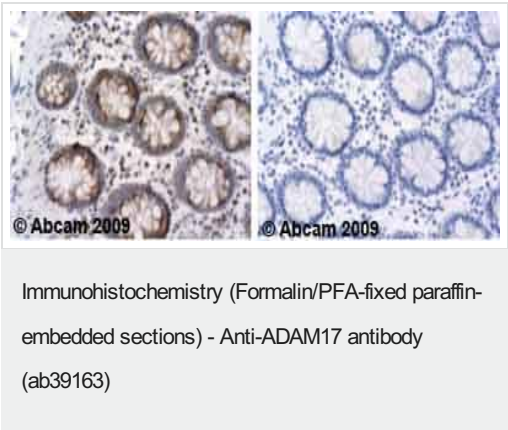
“应用说明”部分 下显示的仅为推荐的起始稀释度;实际最佳的稀释度/浓度应由使用者检定。

应用	Ab评论	说明
IHC-P	★★★★★ (3)	Use at an assay dependent concentration. Perform heat mediated antigen retrieval before commencing with IHC staining protocol.

靶标

功能	Cleaves the membrane-bound precursor of TNF-alpha to its mature soluble form. Responsible for the proteolytical release of soluble JAM3 from endothelial cells surface. Responsible for the proteolytic release of several other cell-surface proteins, including p75 TNF-receptor, interleukin 1 receptor type II, p55 TNF-receptor, transforming growth factor-alpha, L-selectin, growth hormone receptor, MUC1 and the amyloid precursor protein. Also involved in the activation of Notch pathway.
组织特异性	Ubiquitously expressed. Expressed at highest levels in adult heart, placenta, skeletal muscle, pancreas, spleen, thymus, prostate, testes, ovary and small intestine, and in fetal brain, lung, liver and kidney.
序列相似性	Contains 1 disintegrin domain. Contains 1 peptidase M12B domain.
结构域	Must be membrane anchored to cleave the different substrates. The cytoplasmic domain is not required for the this activity. Only the catalytic domain is essential to shed TNF and p75 TNFR. The conserved cysteine present in the cysteine-switch motif binds the catalytic zinc ion, thus inhibiting the enzyme. The dissociation of the cysteine from the zinc ion upon the activation-peptide release activates the enzyme.
翻译后修饰	The precursor is cleaved by a furin endopeptidase. Phosphorylated. Stimulation by growth factor or phorbol 12-myristate 13-acetate induces phosphorylation of Ser-819 but decreases phosphorylation of Ser-791.
细胞定位	Membrane.

图片



Ab39163 staining human normal colon tissue. Staining is localised to cellular membranes.

Left panel: with primary antibody at 2 ug/ml. Right panel: isotype control.

Sections were stained using an automated system DAKO Autostainer Plus , at room temperature. Sections were rehydrated and antigen retrieved with the Dako 3-in-1 AR buffer EDTA pH 9.0 in a DAKO PT Link. Slides were peroxidase blocked in 3% H2O2 in methanol for 10 minutes. They were then blocked with Dako Protein block for 10 minutes (containing casein 0.25% in PBS) then incubated with primary antibody for 20 minutes and detected with

Dako Envision Flex amplification kit for 30 minutes. Colorimetric detection was completed with diaminobenzidine for 5 minutes. Slides were counterstained with Haematoxylin and coverslipped under DePeX. Please note that for manual staining we recommend to optimize the primary antibody concentration and incubation time (overnight incubation), and amplification may be required.

**Please note:** All products are "FOR RESEARCH USE ONLY. NOT FOR USE IN DIAGNOSTIC PROCEDURES"

### **Our Abpromise to you: Quality guaranteed and expert technical support**

---

- Replacement or refund for products not performing as stated on the datasheet
- Valid for 12 months from date of delivery
- Response to your inquiry within 24 hours
- We provide support in Chinese, English, French, German, Japanese and Spanish
- Extensive multi-media technical resources to help you
- We investigate all quality concerns to ensure our products perform to the highest standards

If the product does not perform as described on this datasheet, we will offer a refund or replacement. For full details of the Abpromise, please visit <https://www.abcam.cn/abpromise> or contact our technical team.

### **Terms and conditions**

---

- Guarantee only valid for products bought direct from Abcam or one of our authorized distributors