

Anti-ADAM15 antibody [EPR5619] ab124698

重组 RabMAb

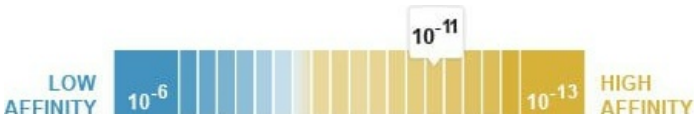
4 References 5 图像

概述

产品名称	Anti-ADAM15抗体[EPR5619]
描述	兔单克隆抗体[EPR5619] to ADAM15
宿主	Rabbit
经测试应用	适用于: WB, IHC-P 不适用于: Flow Cyt, ICC/IF or IP
种属反应性	与反应: Human
免疫原	Synthetic peptide within Human ADAM15 aa 250-350 (extracellular). The exact sequence is proprietary. Database link: Q13444
阳性对照	SW480 cell lysate; Human colon tissue.
常规说明	<p>This product is a recombinant monoclonal antibody, which offers several advantages including:</p> <ul style="list-style-type: none">- High batch-to-batch consistency and reproducibility- Improved sensitivity and specificity- Long-term security of supply- Animal-free production <p>For more information see here.</p> <p>Our RabMAb[®] technology is a patented hybridoma-based technology for making rabbit monoclonal antibodies. For details on our patents, please refer to RabMAb[®] patents.</p> <p>Mouse, Rat: We have preliminary internal testing data to indicate this antibody may not react with these species. Please contact us for more information.</p>

性能

形式	Liquid
存放说明	Shipped at 4°C. Store at +4°C short term (1-2 weeks). Upon delivery aliquot. Store at -20°C. Avoid freeze / thaw cycle. Stable for 12 months at -20°C.
解离常数 (K _D)	K _D = 5.86 x 10 ⁻¹¹ M





[Learn more about Kp](#)

存储溶液	pH: 7.20 Preservative: 0.01% Sodium azide Constituents: 59% PBS, 40% Glycerol (glycerin, glycerine), 0.5% BSA
纯度	Protein A purified
克隆	单克隆
克隆编号	EPR5619
同种型	IgG

应用

The Abpromise guarantee **Abpromise™** 承诺保证使用 ab124698 于以下的经测试应用

“应用说明”部分 下显示的仅为推荐的起始稀释度；实际最佳的稀释度/浓度应由使用者检定。

应用	Ab 评论	说明
WB		1/1000 - 1/10000. Detects a band of approximately 90, 110 kDa (predicted molecular weight: 93 kDa).
IHC-P		1/800. Perform heat mediated antigen retrieval with Tris/EDTA buffer pH 9.0 before commencing with IHC staining protocol. For unpurified use 1/250.00000 - 1/500.00000. See IHC antigen retrieval protocols.

应用说明 Is unsuitable for Flow Cyt, ICC/IF or IP.

靶标

功能	Active metalloproteinase with gelatinolytic and collagenolytic activity. Plays a role in the wound healing process. Mediates both heterotypic intraepithelial cell/T-cell interactions and homotypic T-cell aggregation. Inhibits beta-1 integrin-mediated cell adhesion and migration of airway smooth muscle cells. Suppresses cell motility on or towards fibronectin possibly by driving alpha-v/beta-1 integrin (ITAGV-ITGB1) cell surface expression via ERK1/2 inactivation. Cleaves E-cadherin in response to growth factor deprivation. Plays a role in glomerular cell migration. Plays a role in pathological neovascularization. May play a role in cartilage remodeling. May be proteolytically processed, during sperm epididymal maturation and the acrosome reaction. May play a role in sperm-egg binding through its disintegrin domain.
组织特异性	Expressed in colon and small intestine. Expressed in airway smooth muscle and glomerular mesangial cells (at protein level). Ubiquitously expressed. Overexpressed in atherosclerotic lesions. Constitutively expressed in cultured endothelium and smooth muscle. Expressed in chondrocytes. Expressed in airway smooth muscle and glomerular mesangial cells.
序列相似性	Contains 1 disintegrin domain. Contains 1 EGF-like domain. Contains 1 peptidase M12B domain.
结构域	The cytoplasmic domain interacts with endophilin I and sorting nexin 9. Disintegrin domain binds to integrin alphaV-beta3.

The conserved cysteine present in the cysteine-switch motif binds the catalytic zinc ion, thus inhibiting the enzyme. The dissociation of the cysteine from the zinc ion upon the activation-peptide release activates the enzyme.

翻译后修饰

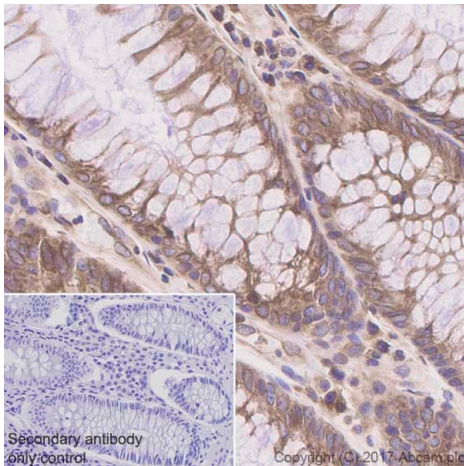
The precursor is cleaved by a furin endopeptidase.

Phosphorylation increases association with PTKs.

细胞定位

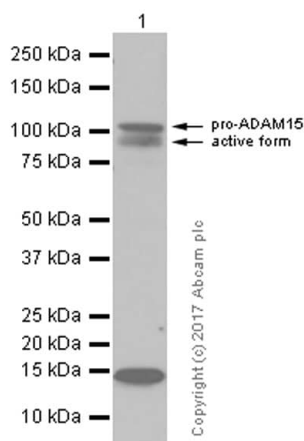
Endomembrane system. Cell junction > adherens junction. Cell projection > cilium > flagellum. Cytoplasmic vesicle > secretory vesicle > acrosome. The majority of the protein is localized in a perinuclear compartment which may correspond to the trans-Golgi network or the late endosome. The pro-protein is the major detectable form on the cell surface, whereas the majority of the protein in the cell is processed.

图片



Immunohistochemistry (Formalin/PFA-fixed paraffin-embedded sections) - Anti-ADAM15 antibody [EPR5619] (ab124698)

Immunohistochemistry (Formalin/PFA-fixed paraffin-embedded sections) analysis of human colon tissue sections labeling ADAM15 with purified ab124698 at 1:800 dilution (2.34 µg/ml). Heat mediated antigen retrieval was performed using [ab93684](#) (Tris/EDTA buffer, pH 9.0). Tissue was counterstained with hematoxylin. ImmunoHistoProbe one step HRP Polymer (ready to use). PBS instead of the primary antibody was used as the negative control.



Western blot - Anti-ADAM15 antibody [EPR5619] (ab124698)

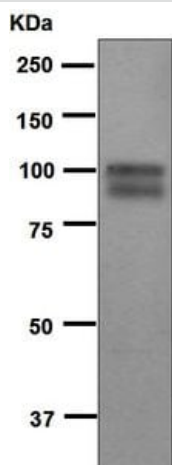
Anti-ADAM15 antibody [EPR5619] (ab124698) at 1/1000 dilution (purified) + SW480 (Human colorectal adenocarcinoma epithelial cell) whole cell lysates at 15 µg

Secondary

Goat Anti-Rabbit IgG H&L (HRP) ([ab97051](#)) at 1/20000 dilution (Goat Anti-Rabbit IgG, (H+L), Peroxidase conjugated)

Predicted band size: 93 kDa

Observed band size: 110,90 kDa



Western blot - Anti-ADAM15 antibody [EPR5619] (ab124698)

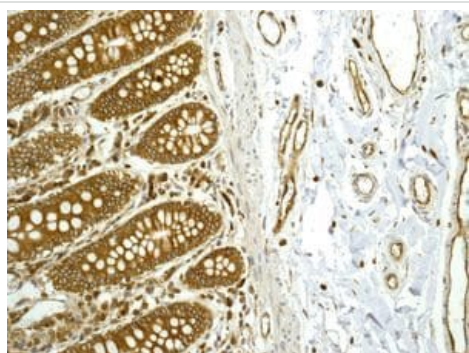
Anti-ADAM15 antibody [EPR5619] (ab124698) at 1/1000 dilution + SW480 cell lysate at 10 µg

Secondary

Goat anti-Rabbit HRP

Predicted band size: 93 kDa

ab124698 also appears to recognize the pro-protein (110kDa). This image was produced using unpurified antibody.



Immunohistochemistry (Formalin/PFA-fixed paraffin-embedded sections) - Anti-ADAM15 antibody [EPR5619] (ab124698)

ab124698, at 1/250 dilution, staining ADAM15 in paraffin-embedded Human colon tissue by immunohistochemistry. This image was produced using unpurified antibody.

Why choose a recombinant antibody?



Research with confidence
Consistent and reproducible results



Long-term and scalable supply
Recombinant technology



Success from the first experiment
Confirmed specificity



Ethical standards compliant
Animal-free production

Anti-ADAM15 antibody [EPR5619] (ab124698)

Please note: All products are "FOR RESEARCH USE ONLY. NOT FOR USE IN DIAGNOSTIC PROCEDURES"

Our Abpromise to you: Quality guaranteed and expert technical support

- Replacement or refund for products not performing as stated on the datasheet
- Valid for 12 months from date of delivery
- Response to your inquiry within 24 hours

- We provide support in Chinese, English, French, German, Japanese and Spanish
- Extensive multi-media technical resources to help you
- We investigate all quality concerns to ensure our products perform to the highest standards

If the product does not perform as described on this datasheet, we will offer a refund or replacement. For full details of the Abpromise, please visit <https://www.abcam.cn/abpromise> or contact our technical team.

Terms and conditions

- Guarantee only valid for products bought direct from Abcam or one of our authorized distributors