

### Anti-ADAM12 antibody ab28747

**3 References**   **1 图像**

#### 概述

产品名称	Anti-ADAM12抗体
描述	山羊多克隆抗体to ADAM12
宿主	Goat
特异性	This antibody is expected to recognise both the longer membrane bound form of human ADAM12 and the shorter soluble ADAM12 splice isoform. This antibody does not cross react with other ADAMS.
经测试应用	适用于: WB, IHC-P
种属反应性	与反应: Human
免疫原	Synthetic peptide: AARPLPVSPARALC , corresponding to N terminal amino acids 2-15 of ADAM12.



**Run BLAST with**



**Run BLAST with**

#### 常规说明

The Life Science industry has been in the grips of a reproducibility crisis for a number of years. Abcam is leading the way in addressing this with our range of recombinant monoclonal antibodies and knockout edited cell lines for gold-standard validation. Please check that this product meets your needs before purchasing.

If you have any questions, special requirements or concerns, please send us an inquiry and/or contact our Support team ahead of purchase. Recommended alternatives for this product can be found below, along with publications, customer reviews and Q&As

#### 性能

形式	Liquid
存放说明	Shipped at 4°C. Upon delivery aliquot and store at -20°C. Avoid freeze / thaw cycles.
存储溶液	pH: 7.30 Preservative: 0.02% Sodium azide Constituents: 0.5% Tris buffered saline, 0.5% BSA
纯度	Immunogen affinity purified
纯化说明	Purified from goat serum by ammonium sulphate precipitation followed by antigen affinity chromatography using the immunizing peptide.
克隆	多克隆

同种型

lgG

应用

The Abpromise guarantee

Abpromise™承诺保证使用ab28747于以下的经测试应用

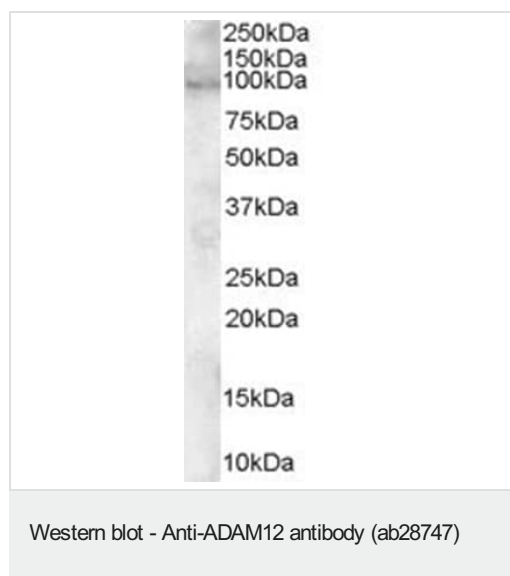
“应用说明”部分 下显示的仅为推荐的起始稀释度;实际最佳的稀释度/浓度应由使用者检定。

应用	Ab评论	说明
WB		Use a concentration of 0.1 - 0.3 µg/ml. Detects a band of approximately 95 kDa (predicted molecular weight: 100 kDa). 1 hour primary incubation is recommended for this product.
IHC-P		Use a concentration of 3.75 µg/ml.

靶标

功能	Involved in skeletal muscle regeneration, specifically at the onset of cell fusion. Also involved in macrophage-derived giant cells (MGC) and osteoclast formation from mononuclear precursors.
组织特异性	Isoform 1 is expressed in placenta and skeletal, cardiac, and smooth muscle. Isoform 2 seems to be expressed only in placenta or in embryo and fetus. Both forms were expressed in some tumor cells lines. Not detected in brain, lung, liver, kidney or pancreas.
序列相似性	Contains 1 disintegrin domain. Contains 1 EGF-like domain. Contains 1 peptidase M12B domain.
结构域	The cysteine-rich domain supports cell adhesion through syndecans and triggers signaling events that lead to beta-1 integrin-dependent cell spreading. In carcinomas cells the binding of this domain to syndecans does not allow the integrin-mediated cell spreading. The conserved cysteine present in the cysteine-switch motif binds the catalytic zinc ion, thus inhibiting the enzyme. The dissociation of the cysteine from the zinc ion upon the activation-peptide release activates the enzyme.
翻译后修饰	The precursor is cleaved by a furin endopeptidase.
细胞定位	Secreted and Cell membrane.

图片



Anti-ADAM12 antibody (ab28747) at 0.1 µg/ml + Human heart lysate (RIPA buffer, 30µg total protein per lane)

**Predicted band size:** 100 kDa

**Observed band size:** 95 kDa

Primary incubation was for 1 hour.

Detected using chemiluminescence.

**Please note:** All products are "FOR RESEARCH USE ONLY. NOT FOR USE IN DIAGNOSTIC PROCEDURES"

### Our Abpromise to you: Quality guaranteed and expert technical support

---

- Replacement or refund for products not performing as stated on the datasheet
- Valid for 12 months from date of delivery
- Response to your inquiry within 24 hours
- We provide support in Chinese, English, French, German, Japanese and Spanish
- Extensive multi-media technical resources to help you
- We investigate all quality concerns to ensure our products perform to the highest standards

If the product does not perform as described on this datasheet, we will offer a refund or replacement. For full details of the Abpromise, please visit <https://www.abcam.cn/abpromise> or contact our technical team.

### Terms and conditions

---

- Guarantee only valid for products bought direct from Abcam or one of our authorized distributors