



Anti-activated Notch1 antibody ab52301

48 References **2 图像**

概述

| | |
|-------|---|
| 产品名称 | Anti-activated Notch1抗体 |
| 描述 | 兔多克隆抗体to activated Notch1 |
| 宿主 | Rabbit |
| 特异性 | ab52301 detects endogenous levels of fragment of activated Notch 1 resulting from cleavage adjacent to Val1744. |
| 经测试应用 | 适用于: IHC-P, WB |
| 种属反应性 | 与反应: Mouse, Human |
| 免疫原 | Synthetic peptide corresponding to Human activated Notch1 aa 1700-1800. Database link: <u>P46531</u> |
| |  <u>Run BLAST with</u>  <u>Run BLAST with</u> |
| 常规说明 | <p>ab52301 is cleaved at Val 1744</p> <p>The Life Science industry has been in the grips of a reproducibility crisis for a number of years. Abcam is leading the way in addressing this with our range of recombinant monoclonal antibodies and knockout edited cell lines for gold-standard validation. Please check that this product meets your needs before purchasing.</p> <p>If you have any questions, special requirements or concerns, please send us an inquiry and/or contact our Support team ahead of purchase. Recommended alternatives for this product can be found below, along with publications, customer reviews and Q&As</p> |

性能

| | |
|------|---|
| 形式 | Liquid |
| 存放说明 | Shipped at 4°C. Store at +4°C short term (1-2 weeks). Upon delivery aliquot. Store at -20°C. Avoid freeze / thaw cycle. |
| 存储溶液 | <p>pH: 7</p> <p>Preservative: 0.02% Sodium azide</p> <p>Constituents: 50% Glycerol, 0.87% Sodium chloride, PBS</p> |
| | PBS without Mg+2 and Ca+2 |
| 纯度 | Immunogen affinity purified |
| 纯化说明 | ab52301 was affinity-purified from rabbit antiserum by affinity-chromatography using epitope- |

| | |
|-----|---------------------|
| | specific immunogen. |
| 克隆 | 多克隆 |
| 同种型 | IgG |

应用

The Abpromise guarantee **Abpromise™**承诺保证使用ab52301于以下的经测试应用

“应用说明”部分 下显示的仅为推荐的起始稀释度;实际最佳的稀释度/浓度应由使用者检定。

| 应用 | Ab评论 | 说明 |
|-------|------|---|
| IHC-P | | Use at an assay dependent concentration. |
| WB | | 1/500 - 1/1000. Detects a band of approximately 95 kDa (predicted molecular weight: 272 kDa). |

靶标

| | |
|-------|---|
| 功能 | Functions as a receptor for membrane-bound ligands Jagged1, Jagged2 and Delta1 to regulate cell-fate determination. Upon ligand activation through the released notch intracellular domain (NICD) it forms a transcriptional activator complex with RBPJ/RBPSUH and activates genes of the enhancer of split locus. Affects the implementation of differentiation, proliferation and apoptotic programs. May be important for normal lymphocyte function. In altered form, may contribute to transformation or progression in some T-cell neoplasms. Involved in the maturation of both CD4+ and CD8+ cells in the thymus. May be important for follicular differentiation and possibly cell fate selection within the follicle. During cerebellar development, may function as a receptor for neuronal DNER and may be involved in the differentiation of Bergmann glia. Represses neuronal and myogenic differentiation. May enhance HIF1A function by sequestering HIF1AN away from HIF1A. |
| 组织特异性 | In fetal tissues most abundant in spleen, brain stem and lung. Also present in most adult tissues where it is found mainly in lymphoid tissues. |
| 疾病相关 | Defects in NOTCH1 are a cause of aortic valve disease 1 (AOVD1) [MIM:109730]. A common defect in the aortic valve in which two rather than three leaflets are present. It is often associated with aortic valve calcification and insufficiency. In extreme cases, the blood flow may be so restricted that the left ventricle fails to grow, resulting in hypoplastic left heart syndrome. |
| 序列相似性 | Belongs to the NOTCH family. Contains 5 ANK repeats. Contains 36 EGF-like domains. Contains 3 LNR (Lin/Notch) repeats. |
| 翻译后修饰 | Synthesized in the endoplasmic reticulum as an inactive form which is proteolytically cleaved by a furin-like convertase in the trans-Golgi network before it reaches the plasma membrane to yield an active, ligand-accessible form. Cleavage results in a C-terminal fragment N(TM) and a N-terminal fragment N(EC). Following ligand binding, it is cleaved by TNF-alpha converting enzyme (TACE) to yield a membrane-associated intermediate fragment called notch extracellular truncation (NEXT). Following endocytosis, this fragment is then cleaved by presenilin dependent gamma-secretase to release a notch-derived peptide containing the intracellular domain (NICD) from the membrane. |

Phosphorylated.

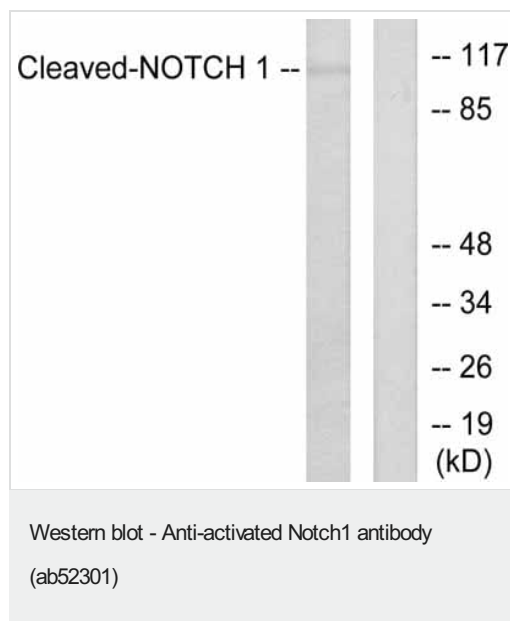
O-glycosylated on the EGF-like domains. Contains both O-linked fucose and O-linked glucose. Ubiquitinated; undergoes 'Lys-29'-linked polyubiquitination catalyzed by ITCH. Monoubiquitination at Lys-1759 is required for activation by gamma-secretase cleavage, it promotes interaction with AAK1, which stabilizes it. Deubiquitination by EIF3F is necessary for nuclear import of activated Notch.

Hydroxylated at Asn-1955 by HIF1AN. Hydroxylated at Asn-2022 by HIF1AN (By similarity). Hydroxylation reduces affinity for HIF1AN and may thus indirectly modulate negative regulation of NICD.

细胞定位

Cell membrane and Nucleus. Following proteolytical processing NICD is translocated to the nucleus.

图片



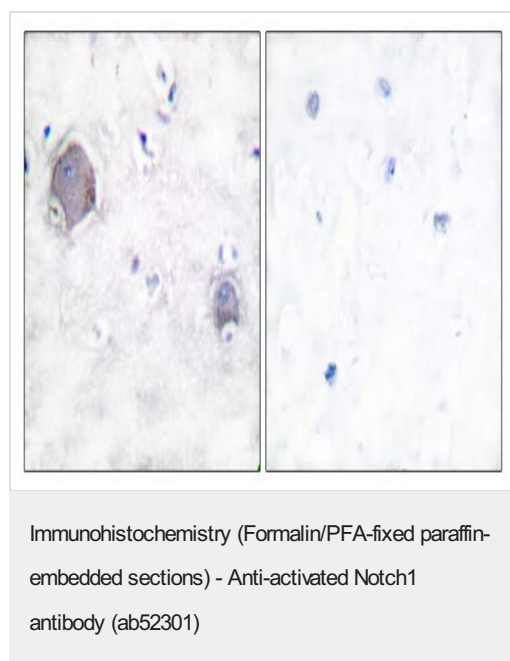
All lanes : Anti-activated Notch1 antibody (ab52301) at 1/500 dilution

Lane 1 : NIH 3T3 cell extract treated with etoposide (25µM, 1 hour)

Lane 2 : NIH 3T3 cell extract treated with etoposide (25µM, 1 hour) with immunising peptide

Predicted band size: 272 kDa

Observed band size: 95 kDa



Immunohistochemical analysis of paraffin-embedded human brain tissue sections labeling activated Notch1 with ab52301 at a dilution of 1/100. The picture on the right is treated with the synthesized peptide.

Please note: All products are "FOR RESEARCH USE ONLY. NOT FOR USE IN DIAGNOSTIC PROCEDURES"

Our Abpromise to you: Quality guaranteed and expert technical support

- Replacement or refund for products not performing as stated on the datasheet
- Valid for 12 months from date of delivery
- Response to your inquiry within 24 hours

- We provide support in Chinese, English, French, German, Japanese and Spanish
- Extensive multi-media technical resources to help you
- We investigate all quality concerns to ensure our products perform to the highest standards

If the product does not perform as described on this datasheet, we will offer a refund or replacement. For full details of the Abpromise, please visit <https://www.abcam.cn/abpromise> or contact our technical team.

Terms and conditions

- Guarantee only valid for products bought direct from Abcam or one of our authorized distributors