

Anti-Actin antibody [EPR16770] ab198991

重组 RabMAb

2 References **5 图像**

概述

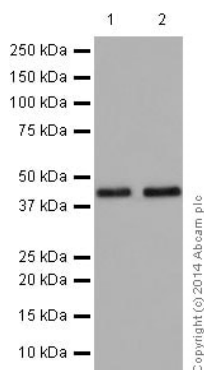
| | |
|-------|---|
| 产品名称 | Anti-Actin抗体[EPR16770] |
| 描述 | 兔单克隆抗体[EPR16770] to Actin |
| 宿主 | Rabbit |
| 经测试应用 | 适用于: WB, IP |
| 种属反应性 | 与反应: Mouse, Rat, Human |
| 免疫原 | Synthetic peptide. This information is proprietary to Abcam and/or its suppliers. |
| 阳性对照 | WB: HeLa, 293, C6, RAW 264.7, PC-12 and NIH/3T3 whole cell lysates; Human fetal brain, fetal heart, fetal kidney and fetal spleen lysates; Mouse brain, heart, kidney and spleen lysates; Rat brain, heart, kidney and spleen lysates. IP: 293 whole cell extract. |
| 常规说明 | <p>This product is a recombinant monoclonal antibody, which offers several advantages including:</p> <ul style="list-style-type: none"> - High batch-to-batch consistency and reproducibility - Improved sensitivity and specificity - Long-term security of supply - Animal-free production <p>For more information see here.</p> <p>Our RabMAb[®] technology is a patented hybridoma-based technology for making rabbit monoclonal antibodies. For details on our patents, please refer to RabMAb[®] patents.</p> |

性能

| | |
|------|--|
| 形式 | Liquid |
| 存放说明 | Shipped at 4°C. Store at +4°C short term (1-2 weeks). Upon delivery aliquot. Store at -20°C long term. Avoid freeze / thaw cycle. |
| 存储溶液 | <p>pH: 7.2</p> <p>Preservative: 0.01% Sodium azide</p> <p>Constituents: 59% PBS, 40% Glycerol (glycerin, glycerine), 0.05% BSA</p> |
| 纯度 | Protein A purified |
| 克隆 | 单克隆 |
| 克隆编号 | EPR16770 |

| 同种型 | IgG | | | | | | | | | | |
|-------|--|---|----|------|----|----|--|---|----|--|--------|
| 应用 | <p>The Abpromise guarantee Abpromise™承诺保证使用ab198991于以下的经测试应用</p> <p>“应用说明”部分 下显示的仅为推荐的起始稀释度;实际最佳的稀释度/浓度应由使用者检定。</p> <table> <tr> <th>应用</th><th>Ab评论</th><th>说明</th></tr> <tr> <td>WB</td><td></td><td>1/20000. Detects a band of approximately 42 kDa (predicted molecular weight: 42 kDa).</td></tr> <tr> <td>IP</td><td></td><td>1/100.</td></tr> </table> | | 应用 | Ab评论 | 说明 | WB | | 1/20000. Detects a band of approximately 42 kDa (predicted molecular weight: 42 kDa). | IP | | 1/100. |
| 应用 | Ab评论 | 说明 | | | | | | | | | |
| WB | | 1/20000. Detects a band of approximately 42 kDa (predicted molecular weight: 42 kDa). | | | | | | | | | |
| IP | | 1/100. | | | | | | | | | |
| 靶标 | | | | | | | | | | | |
| 功能 | Actins are highly conserved proteins that are involved in various types of cell motility and are ubiquitously expressed in all eukaryotic cells. | | | | | | | | | | |
| 疾病相关 | <p>Defects in ACTA1 are the cause of nemaline myopathy type 3 (NEM3) [MIM:161800]. A form of nemaline myopathy. Nemaline myopathies are muscular disorders characterized by muscle weakness of varying severity and onset, and abnormal thread-or rod-like structures in muscle fibers on histologic examination. The phenotype at histological level is variable. Some patients present areas devoid of oxidative activity containg (cores) within myofibers. Core lesions are unstructured and poorly circumscribed.</p> <p>Defects in ACTA1 are a cause of myopathy congenital with excess of thin myofilaments (MPCETM) [MIM:161800]. A congenital muscular disorder characterized at histological level by areas of sarcoplasm devoid of normal myofibrils and mitochondria, and replaced with dense masses of thin filaments. Central cores, rods, ragged red fibers, and necrosis are absent.</p> <p>Defects in ACTA1 are a cause of congenital myopathy with fiber-type disproportion (CFTD) [MIM:255310]; also known as congenital fiber-type disproportion myopathy (CFTDM). CFTD is a genetically heterogeneous disorder in which there is relative hypotrophy of type 1 muscle fibers compared to type 2 fibers on skeletal muscle biopsy. However, these findings are not specific and can be found in many different myopathic and neuropathic conditions.</p> | | | | | | | | | | |
| 序列相似性 | Belongs to the actin family. | | | | | | | | | | |
| 细胞定位 | Cytoplasm > cytoskeleton. | | | | | | | | | | |

图片



Western blot - Anti-Actin antibody [EPR16770]
(ab198991)

All lanes : Anti-Actin antibody [EPR16770] (ab198991) at 1/20000 dilution

Lane 1 : HeLa (Human epithelial cells from cervix adenocarcinoma) whole cell lysate

Lane 2 : 293 (Human embryonic kidney) whole cell lysate

Lysates/proteins at 10 µg per lane.

Secondary

All lanes : Goat Anti-Rabbit IgG, (H+L), Peroxidase conjugated at 1/1000 dilution

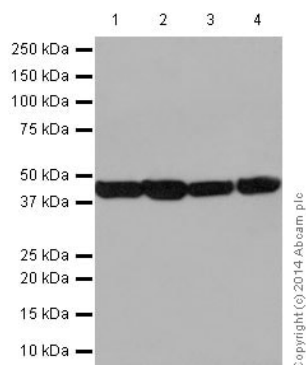
Predicted band size: 42 kDa

Observed band size: 42 kDa

Exposure time: 15 seconds

Blocking/Dilution buffer: 5% NFDM/TBST.

This antibody can recognize ACTS, ACTH, ACTG, ACTC, ACTB & ACTA, it is a pan Actin.



Western blot - Anti-Actin antibody [EPR16770]
(ab198991)

All lanes : Anti-Actin antibody [EPR16770] (ab198991) at 1/20000 dilution

Lane 1 : Human fetal brain lysate

Lane 2 : Human fetal heart lysate

Lane 3 : Human fetal kidney lysate

Lane 4 : Human fetal spleen lysate

Lysates/proteins at 10 µg per lane.

Secondary

All lanes : Anti-Rabbit IgG (HRP), specific to the non-reduced form of IgG at 1/1000 dilution

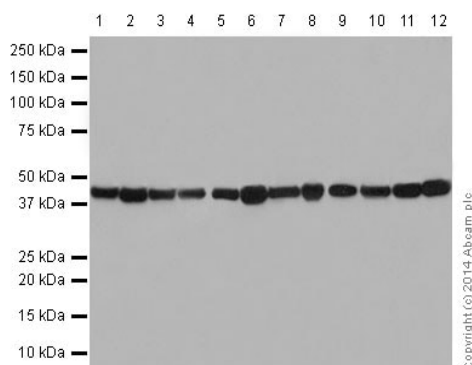
Predicted band size: 42 kDa

Observed band size: 42 kDa

Exposure time: 15 seconds

Blocking/Dilution buffer: 5% NFDM/TBST.

This antibody can recognize ACTS, ACTH, ACTG, ACTC, ACTB & ACTA, it is a pan Actin.



Western blot - Anti-Actin antibody [EPR16770]
(ab198991)

All lanes : Anti-Actin antibody [EPR16770] (ab198991) at 1/20000 dilution

Lane 1 : Mouse brain lysate

Lane 2 : Mouse heart lysate

Lane 3 : Mouse kidney lysate

Lane 4 : Mouse spleen lysate

Lane 5 : Rat brain lysate

Lane 6 : Rat heart lysate

Lane 7 : Rat kidney lysate

Lane 8 : Rat spleen lysate

Lane 9 : C6 (Rat glial tumor cells) whole cell lysate

Lane 10 : RAW 264.7 (Mouse macrophage cells transformed with Abelson murine leukemia virus) whole cell lysate

Lane 11 : PC-12 (Rat adrenal gland pheochromocytoma) whole cell lysate

Lane 12 : NIH/3T3 (Mouse embryo fibroblast cells) whole cell lysate

Lysates/proteins at 10 µg per lane.

Secondary

All lanes : Goat Anti-Rabbit IgG, (H+L), Peroxidase conjugated at 1/1000 dilution

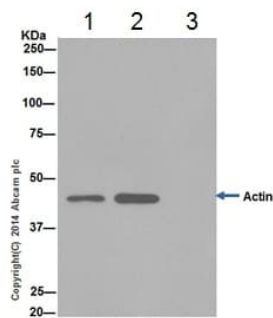
Predicted band size: 42 kDa

Observed band size: 42 kDa

Exposure time: 15 seconds

Blocking/Dilution buffer: 5% NFDM/TBST.

This antibody can recognize ACTS, ACTH, ACTG, ACTC, ACTB & ACTA, it is a pan Actin.



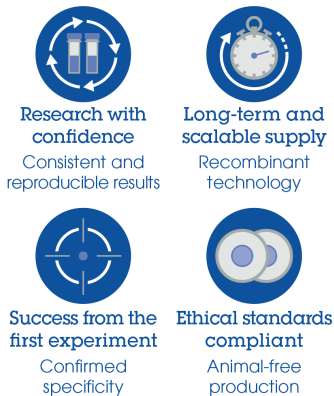
Actin was immunoprecipitated from 1mg of 293 (Human embryonic kidney) whole cell extract with ab198991 at 1/100 dilution. Western blot was performed from the immunoprecipitate using ab198991 at 1/1000 dilution. Anti-Rabbit IgG (HRP), specific to the non-reduced form of IgG, was used as secondary antibody at 1/1500 dilution.

Lane 1: 293 whole cell extract 10 µg (Input). Lane 2: ab198991 IP in 293 whole cell extract. Lane 3: Rabbit monoclonal IgG (**ab172730**) instead of ab198991 in 293 whole cell extract.

Blocking and dilution buffer and concentration: 5% NFDM/TBST.

Immunoprecipitation - Anti-Actin antibody
[EPR16770] (ab198991)

Why choose a
recombinant antibody?



Anti-Actin antibody [EPR16770] (ab198991)

Please note: All products are "FOR RESEARCH USE ONLY. NOT FOR USE IN DIAGNOSTIC PROCEDURES"

Our Abpromise to you: Quality guaranteed and expert technical support

- Replacement or refund for products not performing as stated on the datasheet
- Valid for 12 months from date of delivery
- Response to your inquiry within 24 hours

- We provide support in Chinese, English, French, German, Japanese and Spanish
- Extensive multi-media technical resources to help you
- We investigate all quality concerns to ensure our products perform to the highest standards

If the product does not perform as described on this datasheet, we will offer a refund or replacement. For full details of the Abpromise, please visit <https://www.abcam.cn/abpromise> or contact our technical team.

Terms and conditions

- Guarantee only valid for products bought direct from Abcam or one of our authorized distributors