

Anti-ACTH antibody [AH26 + 57] - N-terminal ab199007

[2 References](#) [1 图像](#)

概述

产品名称	Anti-ACTH抗体[AH26 + 57] - N-terminal
描述	小鼠单克隆抗体[AH26 + 57] to ACTH - N-terminal
宿主	Mouse
特异性	ab199007 is specific to Synacthen (aa1-24 of ACTH); does not react with CLIP (aa17-39 of ACTH).
经测试应用	适用于: IHC-P
种属反应性	与反应: Human
免疫原	<p>This product was produced with the following immunogens:</p> <p>Synthetic peptide within Human ACTH aa 1 to the C-terminus (N terminal) conjugated to keyhole limpet haemocyanin. The exact immunogen sequence used to generate this antibody is proprietary information. If additional detail on the immunogen is needed to determine the suitability of the antibody for your needs, please contact our Scientific Support team to discuss your requirements. This sequence corresponds to amino acids 138-162 of the precursor POMC. (AH26)</p> <p>Database link: P01189</p> <p>Recombinant fragment (N terminal). (57)</p> <p>Database link: P01189</p>

 [Run BLAST with](#)

 [Run BLAST with](#)

阳性对照

IHC-P: Human pituitary gland.

常规说明

Please note that this antibody is an oligoclonal antibody. It is a cocktail of monoclonal antibodies that have been carefully selected. Oligoclonal antibodies have not only the specificity and batch-to-batch consistency of a monoclonal antibody, but also have the advantage of the sensitivity of a polyclonal antibody due to their ability to recognize multiple epitopes on an antigen.

性能

形式	Liquid
存放说明	Shipped at 4°C. Store at +4°C short term (1-2 weeks). Upon delivery aliquot. Store at -20°C long term. Avoid freeze / thaw cycle.
存储溶液	pH: 7.2 Preservative: 0.05% Sodium azide

	Constituents: 99% PBS, 0.05% BSA
纯度	Protein A/G purified
克隆	单克隆
克隆编号	AH26 + 57
同种型	IgG1
轻链类型	kappa

应用

The Abpromise guarantee **Abpromise™** 承诺保证使用 ab199007 于以下的经测试应用

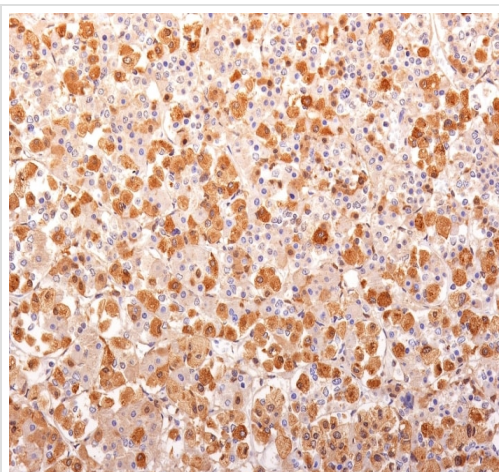
“应用说明”部分 下显示的仅为推荐的起始稀释度;实际最佳的稀释度/浓度应由使用者检定。

应用	Ab评论	说明
IHC-P		Use a concentration of 1 - 2 µg/ml. Perform heat mediated antigen retrieval with Tris/EDTA buffer pH 9.0 before commencing with IHC staining protocol.

靶标

相关性	ACTH occurs in cells of the anterior pituitary and in neurons in brain. It regulates the corticosteroid production in the adrenal cortex. Beta endorphin and Met enkephalin are endogenous opiates. MSH (melanocyte stimulating hormone) increases the pigmentation of skin by increasing melanin production in melanocytes.
细胞定位	Secreted

图片



Immunohistochemical analysis of Formalin-fixed, paraffin-embedded human Pituitary Gland labeling ACTH with ab199007 at 2µg/mL (30 minutes at RT) (Staining of formalin-fixed tissues requires heating tissue sections in 10mM Tris with 1mM EDTA, pH 9.0, for 45 min at 95°C followed by cooling at RT for 20 minutes).

Immunohistochemistry (Formalin/PFA-fixed paraffin-embedded sections) - Anti-ACTH antibody [AH26 + 57] - N-terminal (ab199007)

Please note: All products are "FOR RESEARCH USE ONLY. NOT FOR USE IN DIAGNOSTIC PROCEDURES"

Our Abpromise to you: Quality guaranteed and expert technical support

- Replacement or refund for products not performing as stated on the datasheet
- Valid for 12 months from date of delivery
- Response to your inquiry within 24 hours

- We provide support in Chinese, English, French, German, Japanese and Spanish
- Extensive multi-media technical resources to help you
- We investigate all quality concerns to ensure our products perform to the highest standards

If the product does not perform as described on this datasheet, we will offer a refund or replacement. For full details of the Abpromise, please visit <https://www.abcam.cn/abpromise> or contact our technical team.

Terms and conditions

- Guarantee only valid for products bought direct from Abcam or one of our authorized distributors