

### Anti-Acinus antibody ab7352

★★★★★ **1 Abreviews** **4 图像**

#### 概述

产品名称	Anti-Acinus抗体
描述	兔多克隆抗体to Acinus
宿主	Rabbit
特异性	The antibody recognises three different splice forms of Acinus, designated Acinus L, Acinus S and Acinus S'. The epitope is a region near the C-terminus of the cleaved active peptide p17.
经测试应用	<b>适用于:</b> ICC/IF, WB
种属反应性	<b>与反应:</b> Human
免疫原	Synthetic peptide: TRTALHGVKWPQSNPK , corresponding to amino acids 1065-1080 of Human Acinus or 307 to 322 of human AcinusS, which are identical to those of mouse Acinus (2). The selected antigenic sequence is located near the C-terminus of the cleaved active peptide p17. <a href="#">Run BLAST with</a> <a href="#">Run BLAST with</a>
阳性对照	K562 whole cell lysate.
常规说明	<p>The Life Science industry has been in the grips of a reproducibility crisis for a number of years. Abcam is leading the way in addressing this with our range of recombinant monoclonal antibodies and knockout edited cell lines for gold-standard validation. Please check that this product meets your needs before purchasing.</p> <p>If you have any questions, special requirements or concerns, please send us an inquiry and/or contact our Support team ahead of purchase. Recommended alternatives for this product can be found below, along with publications, customer reviews and Q&amp;As</p>

#### 性能

形式	Liquid
存放说明	Shipped at 4°C. Upon delivery aliquot and store at -20°C or -80°C. Avoid repeated freeze / thaw cycles.
存储溶液	pH: 7.2 Preservative: 0.02% Sodium azide
纯度	Immunogen affinity purified
纯化说明	Purified IgG was prepared from whole serum by affinity chromatography.

克隆

多克隆

同种型

IgG

应用

The Abpromise guarantee

Abpromise™承诺保证使用ab7352于以下的经测试应用

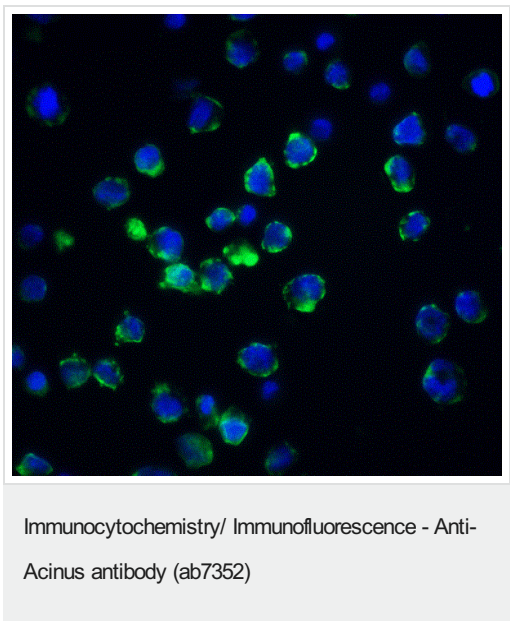
“应用说明”部分 下显示的仅为推荐的起始稀释度;实际最佳的稀释度/浓度应由使用者检定。

应用	Ab评论	说明
ICC/IF		Use a concentration of 10 µg/ml.
WB	★★★★★ (1)	Use at an assay dependent concentration. Detects a band of approximately 220 kDa (predicted molecular weight: 151 kDa).Can be blocked with <b>Acinus peptide (ab8367)</b> .

靶标

功能	Component of a splicing-dependent multiprotein exon junction complex (EJC) deposited at splice junction on mRNAs. The EJC is a dynamic structure consisting of a few core proteins and several more peripheral nuclear and cytoplasmic associated factors that join the complex only transiently either during EJC assembly or during subsequent mRNA metabolism. Induces apoptotic chromatin condensation after activation by CASP3.
组织特异性	Ubiquitous.
序列相似性	Contains 1 SAP domain.
翻译后修饰	Undergoes proteolytic cleavage; the processed form is active, contrary to the uncleaved form.
细胞定位	Nucleus.

图片

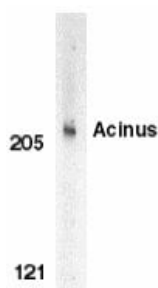


Immunocytochemistry/ Immunofluorescence of K562 cells staining Acinus with ab7352 at 20 µg/ml



Immunocytochemistry/ Immunofluorescence - Anti-Acinus antibody (ab7352)

ab7352 at 10µg/ml staining Acinus in K562 cells by ICC/IF



Western blot - Anti-Acinus antibody (ab7352)

Anti-Acinus antibody (ab7352) at 1 µg/ml + K562 whole cell lysate

**Predicted band size:** 151 kDa

Immunocytochemistry/ Immunofluorescence - Anti-Acinus antibody (ab7352)

Immunofluorescence of Acinus in Hela cells using ab7352 at 10 µg/ml.

**Please note:** All products are "FOR RESEARCH USE ONLY. NOT FOR USE IN DIAGNOSTIC PROCEDURES"

### Our Abpromise to you: Quality guaranteed and expert technical support

- Replacement or refund for products not performing as stated on the datasheet
- Valid for 12 months from date of delivery
- Response to your inquiry within 24 hours
- We provide support in Chinese, English, French, German, Japanese and Spanish
- Extensive multi-media technical resources to help you
- We investigate all quality concerns to ensure our products perform to the highest standards

If the product does not perform as described on this datasheet, we will offer a refund or replacement. For full details of the Abpromise, please visit <https://www.abcam.cn/abpromise> or contact our technical team.

### Terms and conditions

- Guarantee only valid for products bought direct from Abcam or one of our authorized distributors