

Anti-Acid sphingomyelinase antibody [mAbcam74281] ab74281

★★★★★ [1 Abreviews](#) [5 References](#) [2 图像](#)

概述

产品名称	Anti-Acid sphingomyelinase抗体[mAbcam74281]
描述	小鼠单克隆抗体[mAbcam74281] to Acid sphingomyelinase
宿主	Mouse
经测试应用	适用于: WB, Flow Cyt (Intra)
种属反应性	与反应: Human
免疫原	Synthetic peptide corresponding to Human Acid sphingomyelinase aa 1-100 conjugated to keyhole limpet haemocyanin.
阳性对照	This antibody gave a positive signal in the following whole cell lysates: HepG2; A431; MCF7; HeLa; THP1.
常规说明	<p>We can conjugate this antibody to FITC for you (please see ab150251 for details).</p> <p>This antibody clone is manufactured by Abcam. If you require a custom buffer formulation or conjugation for your experiments, please contact orders@abcam.com.</p> <p>The Life Science industry has been in the grips of a reproducibility crisis for a number of years. Abcam is leading the way in addressing this with our range of recombinant monoclonal antibodies and knockout edited cell lines for gold-standard validation. Please check that this product meets your needs before purchasing.</p> <p>If you have any questions, special requirements or concerns, please send us an inquiry and/or contact our Support team ahead of purchase. Recommended alternatives for this product can be found below, along with publications, customer reviews and Q&As</p>

性能

形式	Liquid
存放说明	Shipped at 4°C. Store at +4°C short term (1-2 weeks). Upon delivery aliquot. Store at -20°C or -80°C. Avoid freeze / thaw cycle.
存储溶液	pH: 7.40 Preservative: 0.02% Sodium azide Constituent: PBS
纯度	Protein G purified
克隆	单克隆

克隆编号	mAbcam74281
骨髓瘤	Sp2/0-Ag14
同种型	IgG2a
轻链类型	kappa

应用

The Abpromise guarantee **Abpromise™**承诺保证使用ab74281于以下的经测试应用

“应用说明”部分 下显示的仅为推荐的起始稀释度;实际最佳的稀释度/浓度应由使用者检定。

应用	Ab评论	说明
WB	★★★★★ (1)	Use a concentration of 5 µg/ml. Detects a band of approximately 65 kDa (predicted molecular weight: 70 kDa).
Flow Cyt (Intra)		Use 1µg for 10 ⁶ cells. ab170191 - Mouse monoclonal IgG2a, is suitable for use as an isotype control with this antibody.

靶标

功能 Converts sphingomyelin to ceramide. Also has phospholipase C activities toward 1,2-diacylglycerolphosphocholine and 1,2-diacylglycerolphosphoglycerol. Isoform 2 and isoform 3 have lost catalytic activity.

疾病相关 Defects in SMPD1 are the cause of Niemann-Pick disease type A (NPDA) [MIM:257200]; also known as Niemann-Pick disease classical infantile form. It is an early-onset lysosomal storage disorder caused by failure to hydrolyze sphingomyelin to ceramide. It results in the accumulation of sphingomyelin and other metabolically related lipids in reticuloendothelial and other cell types throughout the body, leading to cell death. Niemann-Pick disease type A is a primarily neurodegenerative disorder characterized by onset within the first year of life, mental retardation, digestive disorders, failure to thrive, major hepatosplenomegaly, and severe neurologic symptoms. The severe neurological disorders and pulmonary infections lead to an early death, often around the age of four. Clinical features are variable. A phenotypic continuum exists between type A (basic neurovisceral) and type B (purely visceral) forms of Niemann-Pick disease, and the intermediate types encompass a cluster of variants combining clinical features of both types A and B.

Defects in SMPD1 are the cause of Niemann-Pick disease type B (NPDB) [MIM:607616]; also known as Niemann-Pick disease visceral form. It is a late-onset lysosomal storage disorder caused by failure to hydrolyze sphingomyelin to ceramide. It results in the accumulation of sphingomyelin and other metabolically related lipids in reticuloendothelial and other cell types throughout the body, leading to cell death. Clinical signs involve only visceral organs. The most constant sign is hepatosplenomegaly which can be associated with pulmonary symptoms. Patients remain free of neurologic manifestations. However, a phenotypic continuum exists between type A (basic neurovisceral) and type B (purely visceral) forms of Niemann-Pick disease, and the intermediate types encompass a cluster of variants combining clinical features of both types A and B. In Niemann-Pick disease type B, onset of the first symptoms occurs in early childhood and patients can survive into adulthood.

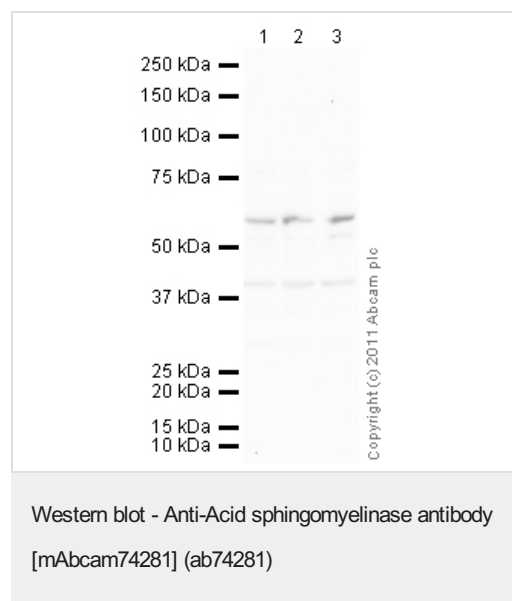
序列相似性 Belongs to the acid sphingomyelinase family.

Contains 1 saposin B-type domain.

细胞定位

Lysosome.

图片



All lanes : Anti-Acid sphingomyelinase antibody [mAbcam74281] (ab74281) at 5 µg/ml

Lane 1 : HepG2 (Human hepatocellular liver carcinoma cell line) Whole Cell Lysate

Lane 2 : A431 (Human epithelial carcinoma cell line) Whole Cell Lysate

Lane 3 : MCF7 (Human breast adenocarcinoma cell line) Whole Cell Lysate

Lysates/proteins at 10 µg per lane.

Secondary

All lanes : Goat Anti-Mouse IgG H&L (HRP) preadsorbed (**ab97040**) at 1/5000 dilution

Developed using the ECL technique.

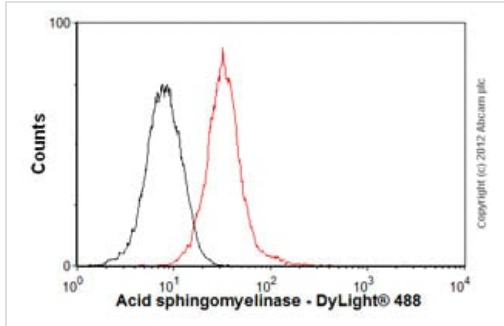
Performed under reducing conditions.

Predicted band size: 70 kDa

Observed band size: 65 kDa

Exposure time: 1 minute

The predicted molecular weight of Acid Sphingomyelinase protein is 70 kDa. However, the protein sequence contains a 46-residue signal sequence at the amino-terminal, which could explain the band observed.



Flow Cytometry (Intracellular) - Anti-Acid sphingomyelinase antibody [mAbcam74281] (ab74281)

Overlay histogram showing HeLa cells stained with ab74281 (red line). The cells were fixed with 80% methanol (5 min) and then permeabilized with 0.1% PBS-Tween for 20 min. The cells were then incubated in 1x PBS / 10% normal goat serum / 0.3M glycine to block non-specific protein-protein interactions followed by the antibody (ab74281, 1 μ g/1x10⁶ cells) for 30 min at 22°C. The secondary antibody used was DyLight® 488 goat anti-mouse IgG (H+L) ([ab96879](#)) at 1/500 dilution for 30 min at 22°C. Isotype control antibody (black line) was mouse IgG2a [ICIGG2A] ([ab91361](#), 1 μ g/1x10⁶ cells) used under the same conditions. Acquisition of >5,000 events was performed.

Please note: All products are "FOR RESEARCH USE ONLY. NOT FOR USE IN DIAGNOSTIC PROCEDURES"

Our Abpromise to you: Quality guaranteed and expert technical support

- Replacement or refund for products not performing as stated on the datasheet
- Valid for 12 months from date of delivery
- Response to your inquiry within 24 hours
- We provide support in Chinese, English, French, German, Japanese and Spanish
- Extensive multi-media technical resources to help you
- We investigate all quality concerns to ensure our products perform to the highest standards

If the product does not perform as described on this datasheet, we will offer a refund or replacement. For full details of the Abpromise, please visit <https://www.abcam.cn/abpromise> or contact our technical team.

Terms and conditions

- Guarantee only valid for products bought direct from Abcam or one of our authorized distributors