


# Anti-Acetylcholinesterase antibody ab31276

★★★★☆ [4 Abreviews](#) [13 References](#) [4 图像](#)

### 概述

<b>产品名称</b>	Anti-Acetylcholinesterase抗体
<b>描述</b>	山羊多克隆抗体to Acetylcholinesterase
<b>宿主</b>	Goat
<b>特异性</b>	This antibody is expected to recognise isoform NP_000656 only (the ubiquitously expressed, hydrophilic form).
<b>经测试应用</b>	<b>适用于:</b> WB, ICC/IF, Flow Cyt
<b>种属反应性</b>	<b>与反应:</b> Human <b>预测可用于:</b> Rat, Rabbit, Cow, Cat 
<b>免疫原</b>	Synthetic peptide: QFDHYSKQDRCSL , corresponding to C terminal amino acids 601-614 of Human Acetylcholinesterase <a href="#">Run BLAST with</a> <a href="#">Run BLAST with</a>
<b>阳性对照</b>	WB: Jurkat, HepG2, SkHep1, Snu387, and SW620 cell lysates. Flow Cyt: HeLa cells ICC/IF: U2OS cells
<b>常规说明</b>	<p>The Life Science industry has been in the grips of a reproducibility crisis for a number of years. Abcam is leading the way in addressing this with our range of recombinant monoclonal antibodies and knockout edited cell lines for gold-standard validation. Please check that this product meets your needs before purchasing.</p> <p>If you have any questions, special requirements or concerns, please send us an inquiry and/or contact our Support team ahead of purchase. Recommended alternatives for this product can be found below, along with publications, customer reviews and Q&amp;As</p>

### 性能

<b>形式</b>	Liquid
<b>存放说明</b>	Shipped at 4°C. Upon delivery aliquot and store at -20°C. Avoid freeze / thaw cycles.
<b>存储溶液</b>	pH: 7.30 Preservative: 0.02% Sodium azide Constituents: Tris buffered saline, 0.5% BSA
<b>纯度</b>	Immunogen affinity purified

纯化说明	Purified from goat serum by ammonium sulphate precipitation followed by antigen affinity chromatography using the immunizing peptide.
克隆	多克隆
同种型	IgG

## 应用

**The Abpromise guarantee**      **Abpromise™**承诺保证使用ab31276于以下的经测试应用

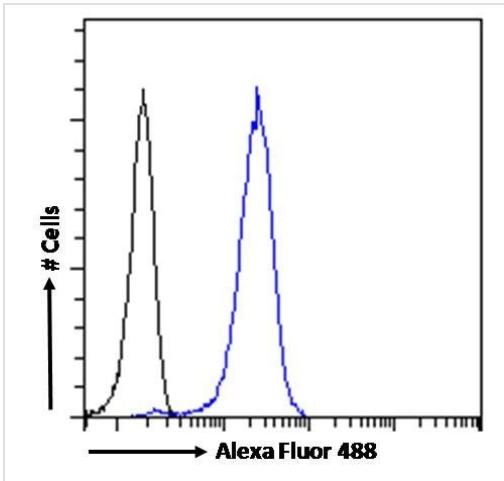
“应用说明”部分 下显示的仅为推荐的起始稀释度;实际最佳的稀释度/浓度应由使用者检定。

应用	Ab评论	说明
WB	★★★★☆ (3)	Use a concentration of 1 - 3 µg/ml. Detects a band of approximately 70 kDa (predicted molecular weight: 68 kDa). 1 hour primary incubation is recommended for this product.
ICC/IF		Use a concentration of 10 µg/ml.
Flow Cyt		Use a concentration of 10 µg/ml.

## 靶标

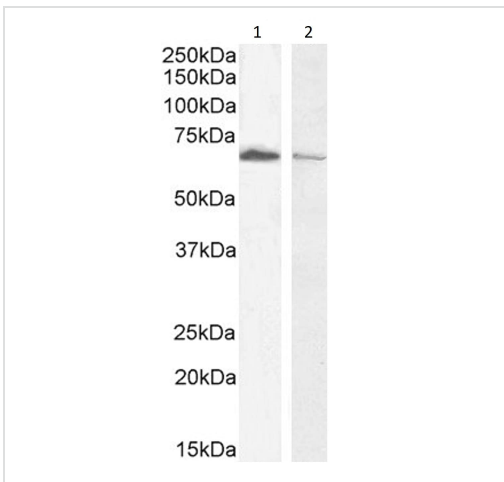
功能	Terminates signal transduction at the neuromuscular junction by rapid hydrolysis of the acetylcholine released into the synaptic cleft. Role in neuronal apoptosis.
组织特异性	Isoform H is highly expressed in erythrocytes.
序列相似性	Belongs to the type-B carboxylesterase/lipase family.
细胞定位	Cell membrane; Cell junction > synapse. Secreted. Cell membrane and Nucleus. Only observed in apoptotic nuclei.

## 图片



Flow Cytometry - Anti-Acetylcholinesterase antibody (ab31276)

Flow cytometric analysis of paraformaldehyde fixed HeLa cells (blue line), permeabilized with 0.5% Triton. Primary incubation 1hr (10µg/mL) followed by Alexa Fluor 488 secondary antibody (1µg/mL). IgG control: Unimmunized goat IgG (black line) followed by Alexa Fluor 488 secondary antibody.



Western blot - Anti-Acetylcholinesterase antibody (ab31276)

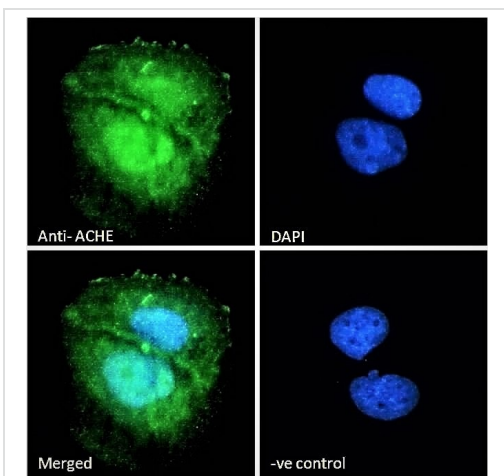
**All lanes :** Anti-Acetylcholinesterase antibody (ab31276) at 0.3 µg/ml

**Lane 1 :** Jurkat cell lysate at 0.5 µg/ml

**Lane 2 :** HepG2 cell lysate in RIPA buffer at 35 µg

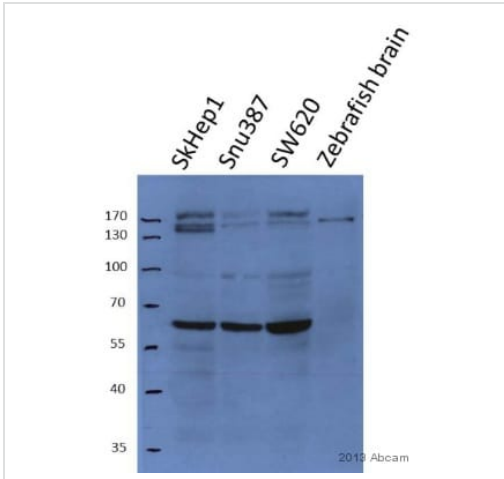
**Predicted band size:** 68 kDa

Detected by chemiluminescence.



Immunocytochemistry/ Immunofluorescence - Anti-Acetylcholinesterase antibody (ab31276)

Immunocytochemistry/Immunofluorescence analysis of paraformaldehyde fixed U2OS cells, permeabilized with 0.15% Triton. Primary incubation 1hr (10µg/mL) followed by Alexa Fluor 488 secondary antibody (2µg/mL), showing nuclear, membrane and cytoplasmic staining. The nuclear stain is DAPI (blue). Negative control: Unimmunized goat IgG (10µg/mL) followed by Alexa Fluor 488 secondary antibody (2µg/mL).



Western blot - Anti-Acetylcholinesterase antibody (ab31276)

This image is courtesy of an Abreview submitted by Ender Avci

**All lanes** : Anti-Acetylcholinesterase antibody (ab31276) at 1/200 dilution

**Lane 1** : SkHep1 cell lysate

**Lane 2** : Snu387 cell lysate

**Lane 3** : SW620 cell lysate

**Lane 4** : Zebrafish brain lysate

Lysates/proteins at 50 µg per lane.

**Secondary**

**All lanes** : HRP-conjugated Rabbit anti-goat IgG polyclonal at 1/5000 dilution

Developed using the ECL technique.

Performed under reducing conditions.

**Predicted band size:** 68 kDa

**Exposure time:** 20 minutes

**Please note:** All products are "FOR RESEARCH USE ONLY. NOT FOR USE IN DIAGNOSTIC PROCEDURES"

**Our Abpromise to you: Quality guaranteed and expert technical support**

- Replacement or refund for products not performing as stated on the datasheet
- Valid for 12 months from date of delivery
- Response to your inquiry within 24 hours
- We provide support in Chinese, English, French, German, Japanese and Spanish
- Extensive multi-media technical resources to help you
- We investigate all quality concerns to ensure our products perform to the highest standards

If the product does not perform as described on this datasheet, we will offer a refund or replacement. For full details of the Abpromise, please visit <https://www.abcam.cn/abpromise> or contact our technical team.

**Terms and conditions**

- Guarantee only valid for products bought direct from Abcam or one of our authorized distributors