


Anti-ABL1 (phospho Y412) antibody ab4717

8 References [1 图像](#)

概述

产品名称	Anti-ABL1 (phospho Y412)抗体
描述	兔多克隆抗体to ABL1 (phospho Y412)
宿主	Rabbit
经测试应用	适用于: WB
种属反应性	与反应: Human 预测可用于: Mouse 
免疫原	Synthetic peptide corresponding to Human ABL1 (phospho Y412).
阳性对照	Fibroblasts transfected with oncogenic ΔSH3-Abl.
常规说明	<p>c-Abl is a 140-150 kDa non-receptor protein tyrosine kinase whose precise functions are not known, but roles for Abl in growth factor and integrin signaling, cell cycle regulation, cytoskeletal reorganization, neurogenesis, and responses to DNA damage and oxidative stress have been suggested. c-Abl kinase activity is increased in vivo by diverse physiological stimuli including ionizing radiation, entry into S phase, integrin activation, and platelet-derived growth factor (PDGF) stimulation. c-Abl contains various protein binding domains that appear to enable it to regulate the functions of many proteins by forming complexes, most notably three isoforms of the oncogenic protein Bcr/Abl. c-Abl becomes fully activated by sequential phosphorylation of tyrosines 412 and 245.</p> <p>The Life Science industry has been in the grips of a reproducibility crisis for a number of years. Abcam is leading the way in addressing this with our range of recombinant monoclonal antibodies and knockout edited cell lines for gold-standard validation. Please check that this product meets your needs before purchasing.</p> <p>If you have any questions, special requirements or concerns, please send us an inquiry and/or contact our Support team ahead of purchase. Recommended alternatives for this product can be found below, along with publications, customer reviews and Q&As</p>

性能

形式	Liquid
存放说明	Shipped at 4°C. Upon delivery aliquot and store at -20°C or -80°C. Avoid repeated freeze / thaw cycles.
存储溶液	pH: 7.30

Preservative: 0.05% Sodium azide
Constituents: PBS, 0.1% BSA

PBS is without Mg²⁺ and Ca²⁺ and BSA is IgG and protease free.

纯度

Immunogen affinity purified

纯化说明

Purified from rabbit serum by sequential epitope-specific chromatography. The antibody has been negatively pre-adsorbed using a non-phosphopeptide corresponding to the site of phosphorylation to remove antibody that is reactive with non-phosphorylated c-Abl. The final product is generated by affinity chromatography using a c-Abl derived peptide that is phosphorylated at tyrosine 245.

Primary antibody说明

c-Abl is a 140-150 kDa non-receptor protein tyrosine kinase whose precise functions are not known, but roles for Abl in growth factor and integrin signaling, cell cycle regulation, cytoskeletal reorganization, neurogenesis, and responses to DNA damage and oxidative stress have been suggested. c-Abl kinase activity is increased in vivo by diverse physiological stimuli including ionizing radiation, entry into S phase, integrin activation, and platelet-derived growth factor (PDGF) stimulation. c-Abl contains various protein binding domains that appear to enable it to regulate the functions of many proteins by forming complexes, most notably three isoforms of the oncogenic protein Bcr/Abl. c-Abl becomes fully activated by sequential phosphorylation of tyrosines 412 and 245.

克隆

多克隆

同种型

IgG

应用

The Abpromise guarantee

Abpromise™ 承诺保证使用ab4717于以下的经测试应用

“应用说明”部分 下显示的仅为推荐的起始稀释度;实际最佳的稀释度/浓度应由使用者检定。

应用	Ab评论	说明
WB		Use a concentration of 0.1 - 1 µg/ml. Detects a band of approximately 140 kDa.

靶标

功能

Protein kinase that regulates key processes linked to cell growth and survival. Regulates cytoskeleton remodeling during cell differentiation, cell division and cell adhesion. Localizes to dynamic actin structures, and phosphorylates CRK and CRKL, DOK1, and other proteins controlling cytoskeleton dynamics. Regulates DNA repair potentially by activating the proapoptotic pathway when the DNA damage is too severe to be repaired. Phosphorylates PSMA7 that leads to an inhibition of proteasomal activity and cell cycle transition blocks.

组织特异性

Widely expressed.

疾病相关

Note=A chromosomal aberration involving ABL1 is a cause of chronic myeloid leukemia. Translocation t(9;22)(q34;q11) with BCR. The translocation produces a BCR-ABL found also in acute myeloid leukemia (AML) and acute lymphoblastic leukemia (ALL).

序列相似性

Belongs to the protein kinase superfamily. Tyr protein kinase family. ABL subfamily. Contains 1 protein kinase domain. Contains 1 SH2 domain.

翻译后修饰

Contains 1 SH3 domain.

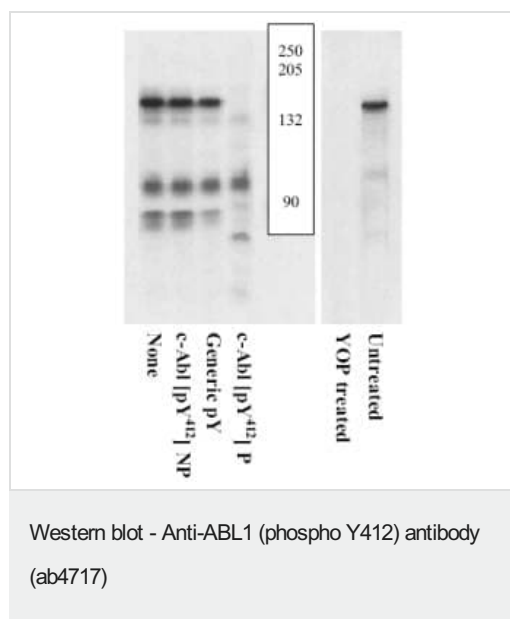
Phosphorylated by PRKDC (By similarity). DNA damage-induced activation of c-Abl requires the function of ATM and Ser-446 phosphorylation (By similarity). Phosphorylation on Thr-735 is required for binding 14-3-3 proteins for cytoplasmic translocation.

Isoform IB is myristoylated on Gly-2.

细胞定位

Cytoplasm > cytoskeleton. Nucleus. Sequestered into the cytoplasm through interaction with 14-3-3 proteins and Nucleus membrane. The myristoylated c-ABL protein is reported to be nuclear.

图片



Peptide Competition:

Fibroblasts transfected with oncogenic Δ SH3-Abl were resolved by SDS-PAGE on a 10% polyacrylamide gel and transferred to PVDF. Membranes were blocked with a 5% BSA-TBST buffer overnight at 4°C, then were incubated with 0.50 μ g/mL phospho c-Abl (Tyr 412) antibody for two hours at room temperature in a 3% BSA-TBST buffer, following prior incubation with: no peptide (1), the non-phosphopeptide corresponding to the immunogen (2), a generic phosphotyrosine containing peptide (3), or, the phosphopeptide immunogen (4). After washing, membranes were incubated with goat F(ab')₂ anti-rabbit IgG alkaline phosphatase and signals were detected using the Tropix WesternStar method. The data show that only the peptide corresponding to phospho c-Abl (Tyr 412) blocks the antibody signal, thereby demonstrating the specificity of the antibody.

Peptide Competition: Fibroblasts transfected with oncogenic ? SH3-Abl were resolved by SDS-PAGE on a 10%

Please note: All products are "FOR RESEARCH USE ONLY. NOT FOR USE IN DIAGNOSTIC PROCEDURES"

Our Abpromise to you: Quality guaranteed and expert technical support

- Replacement or refund for products not performing as stated on the datasheet
- Valid for 12 months from date of delivery
- Response to your inquiry within 24 hours
- We provide support in Chinese, English, French, German, Japanese and Spanish
- Extensive multi-media technical resources to help you
- We investigate all quality concerns to ensure our products perform to the highest standards

If the product does not perform as described on this datasheet, we will offer a refund or replacement. For full details of the Abpromise, please visit <https://www.abcam.cn/abpromise> or contact our technical team.

Terms and conditions

- Guarantee only valid for products bought direct from Abcam or one of our authorized distributors