


# Anti-ABIN3 antibody ab113748

[2 References](#) [2 图像](#)

### 概述

产品名称	Anti-ABIN3抗体
描述	兔多克隆抗体to ABIN3
宿主	Rabbit
经测试应用	适用于: WB, IHC-P
种属反应性	与反应: Human 预测可用于: Mouse 
免疫原	Synthetic peptide corresponding to Human ABIN3 (C terminal) conjugated to keyhole limpet haemocyanin. Database link: <a href="#">Q96KP6</a>
阳性对照	IHC-P: Human adrenal tissue WB: Human spleen tissue lysate
常规说明	<p>The Life Science industry has been in the grips of a reproducibility crisis for a number of years. Abcam is leading the way in addressing this with our range of recombinant monoclonal antibodies and knockout edited cell lines for gold-standard validation. Please check that this product meets your needs before purchasing.</p> <p>If you have any questions, special requirements or concerns, please send us an inquiry and/or contact our Support team ahead of purchase. Recommended alternatives for this product can be found below, along with publications, customer reviews and Q&amp;As</p>

### 性能

形式	Liquid
存放说明	Shipped at 4°C. Store at +4°C short term (1-2 weeks). Store at -20°C or -80°C. Avoid freeze / thaw cycle.
存储溶液	pH: 7.4 Preservative: 0.02% Sodium azide Constituent: 99% PBS
纯度	Immunogen affinity purified
克隆	多克隆
同种型	IgG

## 应用

### The Abpromise guarantee

**Abpromise™** 承诺保证使用 ab113748 于以下的经测试应用

“应用说明”部分 下显示的仅为推荐的起始稀释度;实际最佳的稀释度/浓度应由使用者检定。

应用	Ab评论	说明
WB		Use a concentration of 1 - 2 µg/ml. Predicted molecular weight: 38 kDa.
IHC-P		Use a concentration of 5 µg/ml.

## 靶标

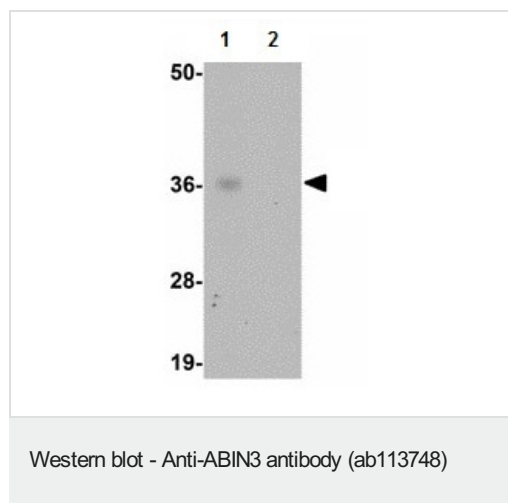
### 相关性

ABIN-3 is a member of the A20-binding inhibitor of NF-kappaB activation (ABIN) protein family. Similar to the previously characterized human ABINs (ABIN-1 and ABIN-2), ABIN-3 can bind to A20 and inhibit NF-kappaB activation. In contrast, mouse ABIN-3 is incapable of inhibiting NF-kappaB activation by proinflammatory stimuli because the protein lacks a complete ABIN homology domain, which is required for the functional activity of human ABIN-3.

### 细胞定位

Cytoplasmic and Nuclear (based on other ABIN family members).

## 图片

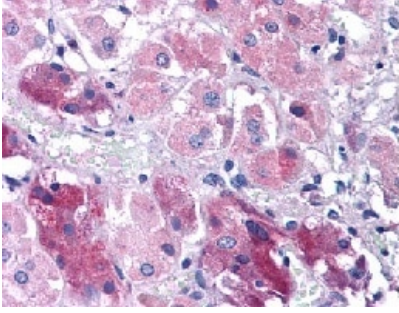


**All lanes :** Anti-ABIN3 antibody (ab113748) at 1 µg/ml

**Lane 1 :** Human spleen tissue lysate

**Lane 2 :** Human spleen tissue lysate with blocking peptide

**Predicted band size:** 38 kDa



ab113748, at 5 µg/ml, staining ABIN3 in formalin fixed, paraffin embedded, Human adrenal tissue by Immunohistochemistry

Immunohistochemistry (Formalin/PFA-fixed paraffin-embedded sections) - Anti-ABIN3 antibody (ab113748)

**Please note:** All products are "FOR RESEARCH USE ONLY. NOT FOR USE IN DIAGNOSTIC PROCEDURES"

### **Our Abpromise to you: Quality guaranteed and expert technical support**

---

- Replacement or refund for products not performing as stated on the datasheet
- Valid for 12 months from date of delivery
- Response to your inquiry within 24 hours
- We provide support in Chinese, English, French, German, Japanese and Spanish
- Extensive multi-media technical resources to help you
- We investigate all quality concerns to ensure our products perform to the highest standards

If the product does not perform as described on this datasheet, we will offer a refund or replacement. For full details of the Abpromise, please visit <https://www.abcam.cn/abpromise> or contact our technical team.

### **Terms and conditions**

---

- Guarantee only valid for products bought direct from Abcam or one of our authorized distributors