

Anti-ABL2 antibody [EPR3906] ab108340

重组 RabMAb

★★★★★ [2 Abreviews](#) [1 References](#) [3 图像](#)

概述

产品名称	Anti-ABL2抗体[EPR3906]
描述	兔单克隆抗体[EPR3906] to ABL2
宿主	Rabbit
经测试应用	适用于: ICC/IF, IHC-P 不适用于: Flow Cyt
种属反应性	与反应: Human 预测可用于: Mouse, Rat 
免疫原	Synthetic peptide. This information is proprietary to Abcam and/or its suppliers.
阳性对照	HeLa, Jurkat, K562, SH-SY5Y and HepG2 cell lysates. Paraffin-embedded Human brain tissue.
常规说明	<p>This product is a recombinant monoclonal antibody, which offers several advantages including:</p> <ul style="list-style-type: none"> - High batch-to-batch consistency and reproducibility - Improved sensitivity and specificity - Long-term security of supply - Animal-free production <p>For more information see here.</p> <p>Our RabMAb[®] technology is a patented hybridoma-based technology for making rabbit monoclonal antibodies. For details on our patents, please refer to RabMAb[®] patents.</p>

性能

形式	Liquid
存放说明	Shipped at 4°C. Store at -20°C. Stable for 12 months at -20°C.
存储溶液	pH: 7.20 Preservative: 0.05% Sodium azide Constituents: 0.1% BSA, 40% Glycerol (glycerin, glycerine), 9.85% Tris glycine, 50% Tissue culture supernatant
纯度	Tissue culture supernatant
克隆	单克隆
克隆编号	EPR3906

同种型IgG

应用

The Abpromise guarantee **Abpromise™**承诺保证使用ab108340于以下的经测试应用
“应用说明”部分 下显示的仅为推荐的起始稀释度;实际最佳的稀释度/浓度应由使用者检定。

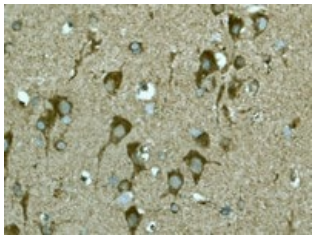
应用	Ab评论	说明
ICC/IF		1/500 - 1/1000.
IHC-P		1/250 - 1/500. Perform heat mediated antigen retrieval with citrate buffer pH 6 before commencing with IHC staining protocol.

应用说明Is unsuitable for Flow Cyt.

靶标

功能	May act in regulation of cell growth and transformation by interacting with nonreceptor tyrosine kinases ABL1 and/or ABL2. Part of the WAVE complex that regulates lamellipodia formation. The WAVE complex regulates actin filament reorganization via its interaction with the Arp2/3 complex. Regulates ABL1/c-Abl-mediated phosphorylation of MENA.
序列相似性	Belongs to the ABI family. Contains 1 SH3 domain. Contains 1 t-SNARE coiled-coil homology domain.
翻译后修饰	Is a substrate for ABL1.
细胞定位	Cytoplasm and Cell projection > lamellipodium. Cell projection > filopodium. Cytoplasm > cytoskeleton. Isoform 1 but not isoform 3 is localized to protruding lamellipodia and filopodia tips.

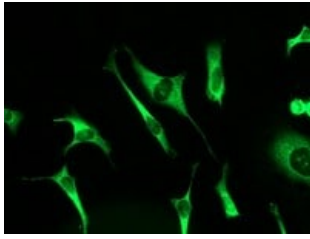
图片



Immunohistochemistry (Formalin/PFA-fixed paraffin-embedded sections) - Anti-ABI2 antibody [EPR3906] (ab108340)

ab108340, at 1/250, staining ABI2 in paraffin-embedded Human brain tissue by Immunohistochemistry.

Perform heat mediated antigen retrieval with citrate buffer pH 6 before commencing with IHC staining protocol.



ab108340, at 1/500, staining ABI2 in HeLa cells by Immunofluorescence.

Immunocytochemistry/ Immunofluorescence - Anti-ABI2 antibody [EPR3906] (ab108340)

Why choose a recombinant antibody?



Research with confidence
Consistent and reproducible results



Long-term and scalable supply
Recombinant technology



Success from the first experiment
Confirmed specificity



Ethical standards compliant
Animal-free production

Anti-ABI2 antibody [EPR3906] (ab108340)

Please note: All products are "FOR RESEARCH USE ONLY. NOT FOR USE IN DIAGNOSTIC PROCEDURES"

Our Abpromise to you: Quality guaranteed and expert technical support

- Replacement or refund for products not performing as stated on the datasheet
- Valid for 12 months from date of delivery
- Response to your inquiry within 24 hours
- We provide support in Chinese, English, French, German, Japanese and Spanish
- Extensive multi-media technical resources to help you
- We investigate all quality concerns to ensure our products perform to the highest standards

If the product does not perform as described on this datasheet, we will offer a refund or replacement. For full details of the Abpromise, please visit <https://www.abcam.cn/abpromise> or contact our technical team.

Terms and conditions

- Guarantee only valid for products bought direct from Abcam or one of our authorized distributors