

### Anti-ABCF2 antibody [2001C1] ab50807

敲除 验证

#### 2 图像

#### 概述

产品名称	Anti-ABCF2抗体[2001C1]
描述	小鼠单克隆抗体[2001C1] to ABCF2
宿主	Mouse
经测试应用	适用于: WB
种属反应性	与反应: Human, Recombinant fragment
免疫原	Recombinant full length protein corresponding to Human ABCF2. Database link: <a href="#">Q9UG63</a>
阳性对照	WB: HEK293 and HeLa cell lysates; Recombinant ABCF2 fragment.
常规说明	<p>The Life Science industry has been in the grips of a reproducibility crisis for a number of years. Abcam is leading the way in addressing this with our range of recombinant monoclonal antibodies and knockout edited cell lines for gold-standard validation. Please check that this product meets your needs before purchasing.</p> <p>If you have any questions, special requirements or concerns, please send us an inquiry and/or contact our Support team ahead of purchase. Recommended alternatives for this product can be found below, along with publications, customer reviews and Q&amp;As</p>

#### 性能

形式	Liquid
存放说明	Shipped at 4°C. Store at +4°C short term (1-2 weeks). Upon delivery aliquot. Store at -20°C long term.
存储溶液	pH: 7.40 Preservative: 0.05% Sodium azide Constituents: 0.0225% Potassium chloride, 1% BSA, 0.03% Potassium phosphate, 0.812% Sodium chloride, 0.1312% Sodium phosphate
纯度	Protein G purified
纯化说明	ab50807 was purified using protein G column chromatography from culture supernatant of hybridoma cultured in a medium containing bovine IgG-depleted (approximately 95%) fetal bovine serum and filtered through a 0.22 µm membrane.

克隆	单克隆
克隆编号	2001C1
同种型	IgG1

应用

The Abpromise guarantee

Abpromise™承诺保证使用ab50807于以下的经测试应用

“应用说明”部分 下显示的仅为推荐的起始稀释度;实际最佳的稀释度/浓度应由使用者检定。

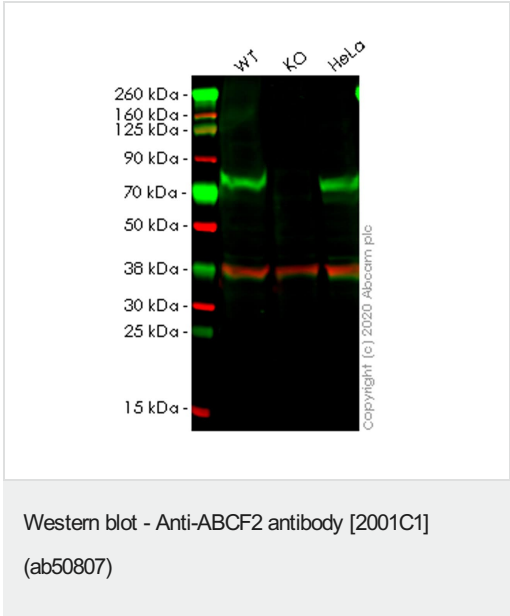
应用	Ab评论	说明
WB		Use at an assay dependent concentration. Predicted molecular weight: 71 kDa.

靶标

相关性

ABCF 2 is a member of the ABC Transporter superfamily and of the GCN20 subfamily. As a member of the ABC Transporter family, it functions to transport various molecules across extra- and intracellular membranes.

图片



**All lanes** : Anti-ABCF2 antibody [2001C1] (ab50807) at 1/500 dilution

**Lane 1** : Wild-type HEK-293T (Human epithelial cell line from embryonic kidney transformed with large T antigen) whole cell lysate

**Lane 2** : ABCF2 knockout HEK-293T (Human epithelial cell line from embryonic kidney transformed with large T antigen) whole cell lysate

**Lane 3** : HeLa (Human epithelial cell line from cervix adenocarcinoma) whole cell lysate

Lysates/proteins at 20 µg per lane.

**Secondary**

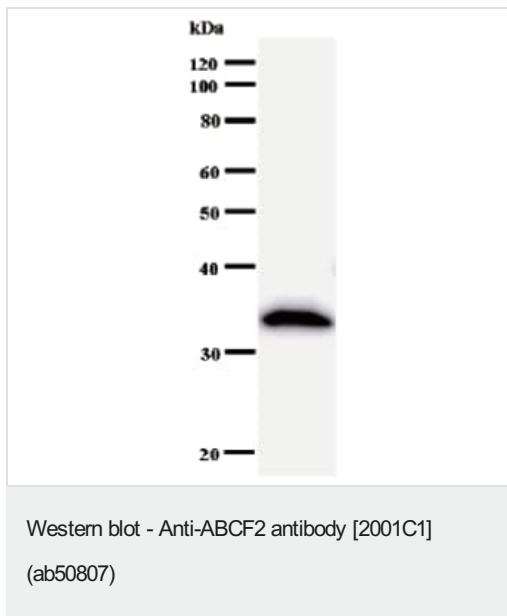
**All lanes** : Goat Anti-Rabbit IgG H&L (IRDye® 680RD) preadsorbed ([ab216777](#)) at 1/10000 dilution

**Predicted band size:** 71 kDa

**Observed band size:** 75 kDa

**Lanes 1-3:** Merged signal (red and green). Green - ab50807 observed at 75 kDa. Red - loading control **ab181602** observed at 36 kDa.

ab50807 Anti-ABCF2 antibody [2001C1] was shown to specifically react with ABCF2 in wild-type HEK-293T cells. Loss of signal was observed when knockout cell line **ab266516** (knockout cell lysate **ab258773**) was used. Wild-type and ABCF2 knockout samples were subjected to SDS-PAGE. ab50807 and Anti-GAPDH antibody[EPR16891] - Loading Control (**ab181602**) were incubated overnight at 4°C at 1 in 500 dilution and 1 in 20000 dilution respectively. Blots were developed with Goat anti-Rabbit IgG H&L (IRDye® 680RD) preadsorbed (**ab216777**) and Goat anti-Mouse IgG H&L (IRDye® 800CW) preadsorbed (**ab216772**) secondary antibodies at 1 in 20000 dilution for 1 hour at room temperature before imaging.



Anti-ABCF2 antibody [2001C1] (ab50807) + Recombinant ABCF2 fragment

**Predicted band size:** 71 kDa

**Observed band size:** 33 kDa

**Please note:** All products are "FOR RESEARCH USE ONLY. NOT FOR USE IN DIAGNOSTIC PROCEDURES"

#### Our Abpromise to you: Quality guaranteed and expert technical support

- Replacement or refund for products not performing as stated on the datasheet
- Valid for 12 months from date of delivery
- Response to your inquiry within 24 hours
- We provide support in Chinese, English, French, German, Japanese and Spanish
- Extensive multi-media technical resources to help you
- We investigate all quality concerns to ensure our products perform to the highest standards

If the product does not perform as described on this datasheet, we will offer a refund or replacement. For full details of the Abpromise,

please visit <https://www.abcam.cn/abpromise> or contact our technical team.

#### **Terms and conditions**

---

- Guarantee only valid for products bought direct from Abcam or one of our authorized distributors