


Anti-ABCE1 antibody ab32270

7 References **3 图像**

概述

产品名称	Anti-ABCE1抗体
描述	兔多克隆抗体to ABCE1
宿主	Rabbit
经测试应用	适用于: ICC/IF, WB
种属反应性	与反应: Mouse, Rat, Human 预测可用于: Chicken, Dog, Zebrafish 
免疫原	Synthetic peptide within Human ABCE1 aa 550 to the C-terminus conjugated to keyhole limpet haemocyanin. The exact sequence is proprietary. Database link: P61221 (Peptide available as ab32269)
阳性对照	HeLa (Human epithelial carcinoma cell line) Whole Cell Lysate Jurkat (Human T cell lymphoblast-like cell line) Whole Cell Lysate A431 (Human epithelial carcinoma cell line) Whole Cell Lysate MEF1 (Mouse embryonic fibroblast cell line) Whole Cell Lysate Testis (Mouse) Tissue Lysate - normal tissue PC12 (Rat adrenal pheochromocytoma cell line) Whole Cell Lysate
常规说明	<p>The Life Science industry has been in the grips of a reproducibility crisis for a number of years. Abcam is leading the way in addressing this with our range of recombinant monoclonal antibodies and knockout edited cell lines for gold-standard validation. Please check that this product meets your needs before purchasing.</p> <p>If you have any questions, special requirements or concerns, please send us an inquiry and/or contact our Support team ahead of purchase. Recommended alternatives for this product can be found below, along with publications, customer reviews and Q&As</p>

性能

形式	Liquid
存放说明	Shipped at 4°C. Store at +4°C short term (1-2 weeks). Upon delivery aliquot. Store at -20°C or -80°C. Avoid freeze / thaw cycle.
存储溶液	pH: 7.40 Preservative: 0.02% Sodium azide Constituent: PBS
Batches of this product that have a concentration < 1mg/ml may have BSA added as a stabilising	

agent. If you would like information about the formulation of a specific lot, please contact our scientific support team who will be happy to help.

纯度	Immunogen affinity purified
克隆	多克隆
同种型	IgG

应用

The Abpromise guarantee **Abpromise™** 承诺保证使用 ab32270 于以下的经测试应用

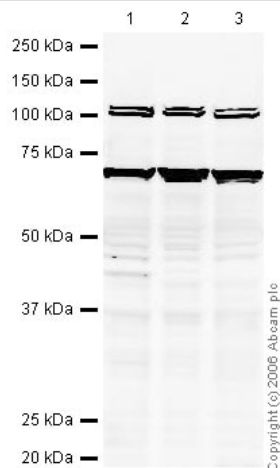
“应用说明”部分 下显示的仅为推荐的起始稀释度; 实际最佳的稀释度/浓度应由使用者检定。

应用	Ab 评论	说明
ICC/IF		Use a concentration of 1 µg/ml.
WB		Use a concentration of 1 µg/ml. Detects a band of approximately 70 kDa (predicted molecular weight: 67 kDa).

靶标

功能	Antagonizes the binding of 2-5A (5'-phosphorylated 2',5'-linked oligoadenylates) by RNase L through direct interaction with RNase L and therefore inhibits its endoribonuclease activity. May play a central role in the regulation of mRNA turnover. Antagonizes the anti-viral effect of the interferon-regulated 2-5A/RNase L pathway. May act as a chaperone for post-translational events during HIV-1 capsid assembly.
序列相似性	Belongs to the ABC transporter superfamily. ABCE family. Contains 2 4Fe-4S ferredoxin-type domains. Contains 2 ABC transporter domains.
细胞定位	Cytoplasm. Mitochondrion. Localized to clusters of virus formation at the plasma membrane.

图片



Western blot - Anti-ABCE1 antibody (ab32270)

All lanes : Anti-ABCE1 antibody (ab32270) at 1 µg/ml

Lane 1 : HeLa (Human epithelial carcinoma cell line) Whole Cell Lysate

Lane 2 : Jurkat whole cell lysate (**ab7899**) at 20 µg

Lane 3 : A-431 whole cell lysate (**ab7909**) at 20 µg

Secondary

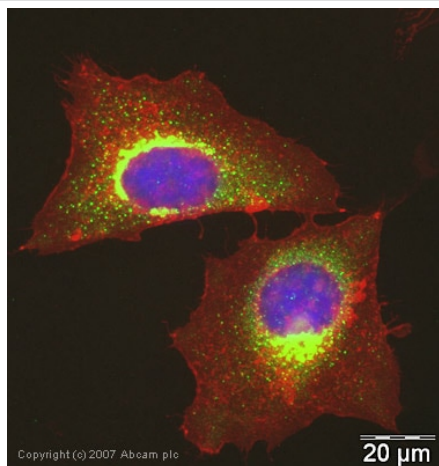
All lanes : Goat polyclonal to Rabbit IgG (Alexa Fluor® 680) at 1/10000 dilution

Performed under reducing conditions.

Predicted band size: 67 kDa

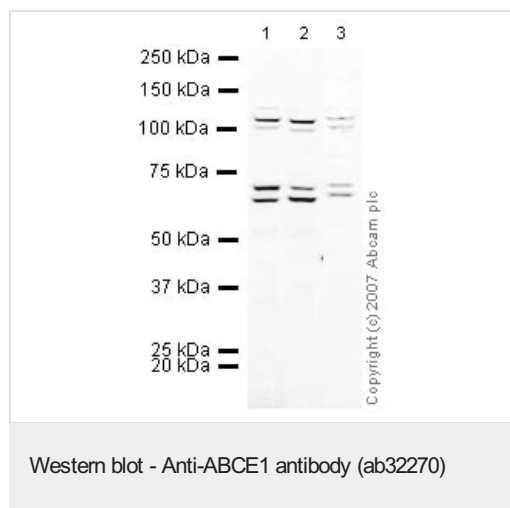
Observed band size: 70 kDa

Additional bands at: 100 kDa. We are unsure as to the identity of these extra bands.



Immunocytochemistry/ Immunofluorescence - Anti-ABCE1 antibody (ab32270)

ICC/IF image of ab32270 stained human HeLa cells. The cells were methanol fixed (5 min), permeabilised in TBS-T (20 min) and incubated with the antibody (ab32270, 1µg/ml) for 1h at room temperature. 1%BSA / 10% normal serum / 0.3M glycine was used to quench autofluorescence and block non-specific protein-protein interactions. The secondary antibody (green) was Alexa Fluor® 488 goat anti-rabbit IgG (H+L) used at a 1/1000 dilution for 1h. Alexa Fluor® 594 WGA was used to label plasma membranes (red). DAPI was used to stain the cell nuclei (blue).



All lanes : Anti-ABCE1 antibody (ab32270) at 1/250 dilution

Lane 1 : MEF1 (Mouse embryonic fibroblast cell line) Whole Cell Lysate

Lane 2 : Testis (Mouse) Tissue Lysate - normal tissue

Lane 3 : PC12 (Rat adrenal pheochromocytoma cell line) Whole Cell Lysate

Lysates/proteins at 10 µg per lane.

Secondary

All lanes : IRDye 680 Conjugated Goat Anti-Rabbit IgG (H+L) at 1/10000 dilution

Performed under reducing conditions.

Predicted band size: 67 kDa

Observed band size: 67,70 kDa

Additional bands at: 110 kDa. We are unsure as to the identity of these extra bands.

Please note: All products are "FOR RESEARCH USE ONLY. NOT FOR USE IN DIAGNOSTIC PROCEDURES"

Our Abpromise to you: Quality guaranteed and expert technical support

- Replacement or refund for products not performing as stated on the datasheet
- Valid for 12 months from date of delivery
- Response to your inquiry within 24 hours
- We provide support in Chinese, English, French, German, Japanese and Spanish
- Extensive multi-media technical resources to help you
- We investigate all quality concerns to ensure our products perform to the highest standards

If the product does not perform as described on this datasheet, we will offer a refund or replacement. For full details of the Abpromise, please visit <https://www.abcam.cn/abpromise> or contact our technical team.

Terms and conditions

- Guarantee only valid for products bought direct from Abcam or one of our authorized distributors