




Anti-ABCB6/PRP antibody ab47837

1 图像

概述

产品名称	Anti-ABCB6/PRP 抗体
描述	兔多克隆抗体 to ABCB6/PRP
宿主	Rabbit
经测试应用	适用于: WB
种属反应性	与反应: Human 预测可用于: Mouse, Rat 
免疫原	Synthetic peptide corresponding to Human ABCB6/PRP aa 440-455 (internal sequence). Sequence: RAMNTQENATRARAVD <div>  Run BLAST with  Run BLAST with </div>
阳性对照	KB cells transfected with the ABCB6/PRP protein.
常规说明	<p>The Life Science industry has been in the grips of a reproducibility crisis for a number of years. Abcam is leading the way in addressing this with our range of recombinant monoclonal antibodies and knockout edited cell lines for gold-standard validation. Please check that this product meets your needs before purchasing.</p> <p>If you have any questions, special requirements or concerns, please send us an inquiry and/or contact our Support team ahead of purchase. Recommended alternatives for this product can be found below, along with publications, customer reviews and Q&As</p>

性能

形式	Liquid
存放说明	Shipped at 4°C. Upon delivery aliquot and store at -20°C or -80°C. Avoid repeated freeze / thaw cycles.
存储溶液	Preservative: 0.01% Sodium azide Constituents: 0.42% Potassium phosphate, 0.87% Sodium chloride
纯度	Immunogen affinity purified
克隆	多克隆
同种型	IgG

应用

The Abpromise guarantee **Abpromise™**承诺保证使用ab47837于以下的经测试应用

“应用说明”部分 下显示的仅为推荐的起始稀释度;实际最佳的稀释度/浓度应由使用者检定。

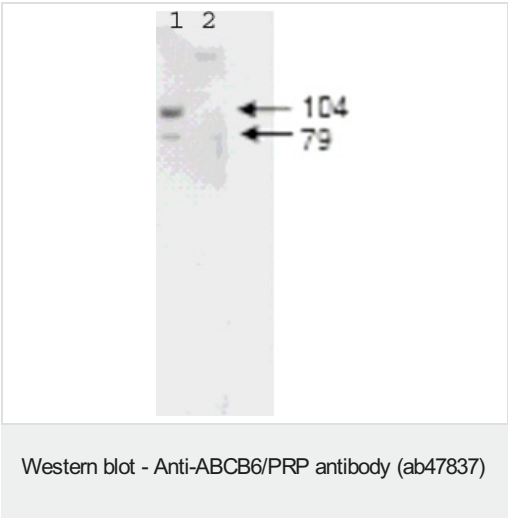
应用	Ab评论	说明
WB		

应用说明	ELISA: 1/40000 - 1/200000. IF (microscopy): Use at an assay dependent dilution. WB: 1/1000 - 1/5000. Predicted molecular weight: 93 kDa. Not yet tested in other applications. Optimal dilutions/concentrations should be determined by the end user.
------	---

靶标

功能	Binds heme and porphyrins and functions in their ATP-dependent uptake into the mitochondria. Plays a crucial role in heme synthesis.
组织特异性	Widely expressed. Highest expression in heart and skeletal muscles.
序列相似性	Belongs to the ABC transporter superfamily. ABCB family. Heavy Metal importer (TC 3.A.1.210) subfamily. Contains 1 ABC transmembrane type-1 domain. Contains 1 ABC transporter domain.
发展阶段	Highly expressed in fetal liver.
细胞定位	Mitochondrion outer membrane.

图片



All lanes : Anti-ABCB6/PRP antibody (ab47837) at 1/1400 dilution

Lane 1 : KB cell lysate expressing Flag™-tagged human ABCB6/PRP protein

Lane 2 : KB cell lysate without a vector insert

Predicted band size: 93 kDa

Observed band size: 104 kDa

Additional bands at: 79 kDa (possible truncated form)

Please note: All products are "FOR RESEARCH USE ONLY. NOT FOR USE IN DIAGNOSTIC PROCEDURES"

Our Abpromise to you: Quality guaranteed and expert technical support

- Replacement or refund for products not performing as stated on the datasheet
- Valid for 12 months from date of delivery
- Response to your inquiry within 24 hours

- We provide support in Chinese, English, French, German, Japanese and Spanish
- Extensive multi-media technical resources to help you
- We investigate all quality concerns to ensure our products perform to the highest standards

If the product does not perform as described on this datasheet, we will offer a refund or replacement. For full details of the Abpromise, please visit <https://www.abcam.cn/abpromise> or contact our technical team.

Terms and conditions

- Guarantee only valid for products bought direct from Abcam or one of our authorized distributors