




Anti-AANAT (phospho T29) antibody ab3439

2 References **1 图像**

概述

产品名称	Anti-AANAT (phospho T29)抗体
描述	兔多克隆抗体to AANAT (phospho T29)
宿主	Rabbit
经测试应用	适用于: WB
种属反应性	与反应: Human 预测可用于: Mouse, Chicken, Hamster, Chimpanzee, Rhesus monkey 
免疫原	Synthetic peptide corresponding to Mouse AANAT aa 24-33 (N terminal) (phospho T29). Sequence: CQRRHT _p LPAS (Peptide available as ab4975)  Run BLAST with  Run BLAST with
阳性对照	Rat pineal gland whole protein extract.
常规说明	<p>The Life Science industry has been in the grips of a reproducibility crisis for a number of years. Abcam is leading the way in addressing this with our range of recombinant monoclonal antibodies and knockout edited cell lines for gold-standard validation. Please check that this product meets your needs before purchasing.</p> <p>If you have any questions, special requirements or concerns, please send us an inquiry and/or contact our Support team ahead of purchase. Recommended alternatives for this product can be found below, along with publications, customer reviews and Q&As</p>

性能

形式	Liquid
存放说明	Shipped at 4°C. Store at +4°C short term (1-2 weeks). Upon delivery aliquot. Store at -20°C or -80°C. Avoid freeze / thaw cycle.
存储溶液	Preservative: 0.05% Sodium azide Constituents: 0.1% BSA, 99% PBS
纯度	Immunogen affinity purified
纯化说明	Total anti-N-terminal AA-NAT-specific IgG was affinity purified on resin-coupled non-phosphopeptide. Phospho-specific N-terminal IgG was subsequently isolated on resin-coupled phosphopeptide.
Primary antibody说明	Pineal gland Serotonin N-acetyltransferase (Arylalkylamine N-acetyltransferase, AA-NAT) is an

~23 kDa protein which is the rate-limiting enzyme in melatonin synthesis. Melatonin serves as the hormonal signal of the daily light / dark cycle, or body clock. The nocturnal oscillation in enzyme activity ranges by 10- to 100-fold depending on species among vertebrates. Studies have shown that AA-NAT is regulated by cAMP at both the mRNA and protein levels. AA-NAT has putative protein kinase A (PKA) sites at Thr 29 and Ser 206. Phosphorylation of AA-NAT at these residues might play a role in protein inactivation via proteasome-dependent degradation.

克隆 多克隆

同种型 IgG

应用

The Abpromise guarantee Abpromise™ 承诺保证使用ab3439于以下的经测试应用

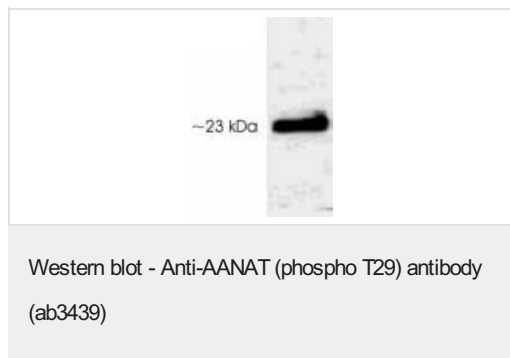
“应用说明”部分 下显示的仅为推荐的起始稀释度;实际最佳的稀释度/浓度应由使用者检定。

应用	Ab评论	说明
WB		Use a concentration of 0.5 µg/ml. Detects a band of approximately 23 kDa (predicted molecular weight: 23 kDa). By Western blot, this antibody detects an ~23 kDa protein representing phospho AA-NAT in rat pineal gland whole protein extract.

靶标

功能	Controls the night/day rhythm of melatonin production in the pineal gland. Catalyzes the N-acetylation of serotonin into N-acetylserotonin, the penultimate step in the synthesis of melatonin.
组织特异性	Highly expressed in pineal gland and at lower levels in the retina. Weak expression in several brain regions and in the pituitary gland.
通路	Aromatic compound metabolism; melatonin biosynthesis; melatonin from serotonin: step 1/2.
疾病相关	Delayed sleep phase syndrome
序列相似性	Belongs to the acetyltransferase family. AANAT subfamily. Contains 1 N-acetyltransferase domain.
翻译后修饰	cAMP-dependent phosphorylation on both N-terminal Thr-31 and C-terminal Ser-205 regulates AANAT activity by promoting interaction with 14-3-3 proteins.
细胞定位	Cytoplasm.

图片



Western blot detection of Serotonin N-acetyltransferase (phospho T29) in transfected 293T cell lysate using ab3439.

Please note: All products are "FOR RESEARCH USE ONLY. NOT FOR USE IN DIAGNOSTIC PROCEDURES"

Our Abpromise to you: Quality guaranteed and expert technical support

- Replacement or refund for products not performing as stated on the datasheet
- Valid for 12 months from date of delivery
- Response to your inquiry within 24 hours
- We provide support in Chinese, English, French, German, Japanese and Spanish
- Extensive multi-media technical resources to help you
- We investigate all quality concerns to ensure our products perform to the highest standards

If the product does not perform as described on this datasheet, we will offer a refund or replacement. For full details of the Abpromise, please visit <https://www.abcam.cn/abpromise> or contact our technical team.

Terms and conditions

- Guarantee only valid for products bought direct from Abcam or one of our authorized distributors