


# Anti-A-Raf (phospho S299) antibody ab112053

## 1 图像

### 概述

产品名称	Anti-A-Raf (phospho S299)抗体
描述	兔多克隆抗体to A-Raf (phospho S299)
宿主	Rabbit
经测试应用	适用于: IHC-P
种属反应性	与反应: Human 预测可用于: Mouse, Rat 
免疫原	Synthetic peptide corresponding to Human A-Raf (phospho S299). Database link: <a href="#">P10398</a>
阳性对照	Human colon carcinoma tissue.
常规说明	<p>The Life Science industry has been in the grips of a reproducibility crisis for a number of years. Abcam is leading the way in addressing this with our range of recombinant monoclonal antibodies and knockout edited cell lines for gold-standard validation. Please check that this product meets your needs before purchasing.</p> <p>If you have any questions, special requirements or concerns, please send us an inquiry and/or contact our Support team ahead of purchase. Recommended alternatives for this product can be found below, along with publications, customer reviews and Q&amp;As</p>

### 性能

形式	Liquid
存放说明	Shipped at 4°C. Store at -20°C. Stable for 12 months at -20°C.
存储溶液	pH: 7.40 Preservative: 0.02% Sodium azide Constituents: 0.88% Sodium chloride, 50% Glycerol (glycerin, glycerine), 49% PBS
纯度	Immunogen affinity purified
纯化说明	ab112053 was affinity-purified from Rabbit antiserum by affinity-chromatography using epitope-specific phosphopeptide. The antibody against non-phosphopeptide was removed by chromatography using non-phosphopeptide corresponding to the phosphorylation site.
克隆	多克隆
同种型	IgG

## 应用

### The Abpromise guarantee

**Abpromise™**承诺保证使用ab112053于以下的经测试应用

“应用说明”部分 下显示的仅为推荐的起始稀释度;实际最佳的稀释度/浓度应由使用者检定。

应用	Ab评论	说明
IHC-P		1/50 - 1/100. Perform heat mediated antigen retrieval with citrate buffer pH 6 before commencing with IHC staining protocol.

## 靶标

### 功能

Involved in the transduction of mitogenic signals from the cell membrane to the nucleus.

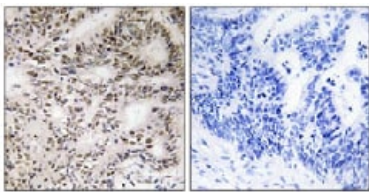
### 组织特异性

Predominantly in urogenital tissues.

### 序列相似性

Belongs to the protein kinase superfamily. TKL Ser/Thr protein kinase family. RAF subfamily.  
Contains 1 phorbol-ester/DAG-type zinc finger.  
Contains 1 protein kinase domain.  
Contains 1 RBD (Ras-binding) domain.

## 图片



ab112053 at 1/50 dilution staining A-Raf in Paraffin-embedded Human colon carcinoma tissue by Immunohistochemistry. The image on the right is treated with the synthesized phospho peptide.

Immunohistochemistry (Formalin/PFA-fixed paraffin-embedded sections) - Anti-A-Raf (phospho S299) antibody (ab112053)

**Please note:** All products are "FOR RESEARCH USE ONLY. NOT FOR USE IN DIAGNOSTIC PROCEDURES"

### Our Abpromise to you: Quality guaranteed and expert technical support

- Replacement or refund for products not performing as stated on the datasheet
- Valid for 12 months from date of delivery
- Response to your inquiry within 24 hours
- We provide support in Chinese, English, French, German, Japanese and Spanish
- Extensive multi-media technical resources to help you
- We investigate all quality concerns to ensure our products perform to the highest standards

If the product does not perform as described on this datasheet, we will offer a refund or replacement. For full details of the Abpromise, please visit <https://www.abcam.cn/abpromise> or contact our technical team.

## Terms and conditions

---

- Guarantee only valid for products bought direct from Abcam or one of our authorized distributors