

Anti-68kDa Neurofilament/NF-L antibody [EP675Y] ab52989

重组 RabMAb

[3 References](#) [2 图像](#)

概述

产品名称	Anti-68kDa Neurofilament/NF-L抗体[EP675Y]
描述	兔单克隆抗体[EP675Y] to 68kDa Neurofilament/NF-L
宿主	Rabbit
经测试应用	适用于: WB, IP 不适用于: ICC/IF
种属反应性	与反应: Mouse, Rat, Human
免疫原	Synthetic peptide. This information is proprietary to Abcam and/or its suppliers.
阳性对照	WB: Human, rat, and mouse brain tissue lysates.
常规说明	This product is a recombinant monoclonal antibody, which offers several advantages including: <ul style="list-style-type: none">- High batch-to-batch consistency and reproducibility- Improved sensitivity and specificity- Long-term security of supply- Animal-free production For more information see here . Our RabMAb [®] technology is a patented hybridoma-based technology for making rabbit monoclonal antibodies. For details on our patents, please refer to RabMAb[®] patents .

性能

形式	Liquid
存放说明	Shipped at 4°C. Store at -20°C. Stable for 12 months at -20°C.
存储溶液	pH: 7.20 Preservative: 0.01% Sodium azide Constituents: 0.05% BSA, 40% Glycerol (glycerin, glycerine), 59% PBS
纯度	Protein A purified
克隆	单克隆
克隆编号	EP675Y
同种型	IgG

应用

The Abpromise guarantee **Abpromise™**承诺保证使用ab52989于以下的经测试应用

“应用说明”部分下显示的仅为推荐的起始稀释度;实际最佳的稀释度/浓度应由使用者检定。

应用	Ab评论	说明
WB		1/1000. Detects a band of approximately 68 kDa (predicted molecular weight: 61 kDa).
IP		1/20.

应用说明 Is unsuitable for ICC/IF.

靶标

功能 Neurofilaments usually contain three intermediate filament proteins: L, M, and H which are involved in the maintenance of neuronal caliber.

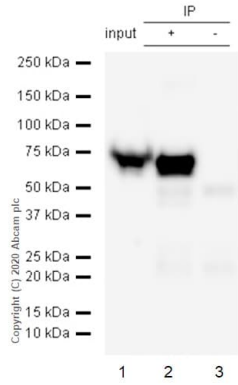
疾病相关 Defects in NEFL are the cause of Charcot-Marie-Tooth disease type 1F (CMT1F) [MIM:607734]. CMT1F is a form of Charcot-Marie-Tooth disease, the most common inherited disorder of the peripheral nervous system. Charcot-Marie-Tooth disease is classified in two main groups on the basis of electrophysiologic properties and histopathology: primary peripheral demyelinating neuropathy or CMT1, and primary peripheral axonal neuropathy or CMT2. Neuropathies of the CMT1 group are characterized by severely reduced nerve conduction velocities (less than 38 m/sec), segmental demyelination and remyelination with onion bulb formations on nerve biopsy, slowly progressive distal muscle atrophy and weakness, absent deep tendon reflexes, and hollow feet. CMT1F is characterized by onset in infancy or childhood (range 1 to 13 years).
Defects in NEFL are the cause of Charcot-Marie-Tooth disease type 2E (CMT2E) [MIM:607684]. CMT2E is an autosomal dominant form of Charcot-Marie-Tooth disease type 2. Neuropathies of the CMT2 group are characterized by signs of axonal regeneration in the absence of obvious myelin alterations, normal or slightly reduced nerve conduction velocities, and progressive distal muscle weakness and atrophy.

序列相似性 Belongs to the intermediate filament family.

结构域 The extra mass and high charge density that distinguish the neurofilament proteins from all other intermediate filament proteins are due to the tailpiece extensions. This region may form a charged scaffolding structure suitable for interaction with other neuronal components or ions.

翻译后修饰 O-glycosylated.
Phosphorylated in the Head and Rod regions by the PKC kinase PKN1, leading to inhibit polymerization.

图片



Immunoprecipitation - Anti-68kDa Neurofilament/NF-L antibody [EP675Y] (ab52989)

Purified ab52989 at 1:20 dilution (2µg) immunoprecipitating 68kDa Neurofilament/NF-L in Human brain lysate.

Lane 1 (input): Human brain lysate 10µg

Lane 2 (+): ab52989 + Human brain lysate.

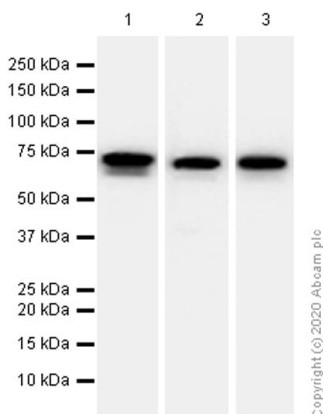
Lane 3 (-): Rabbit monoclonal IgG (**ab172730**) instead of ab52989 in Human brain lysate.

VeriBlot for IP Detection Reagent (HRP)(**ab131366**) (1:1000 dilution) was used for Western blotting.

Blocking Buffer and concentration: 5% NFDm/TBST.

Diluting buffer and concentration: 5% NFDm/TBST.

Observed band size: 68 kDa



Western blot - Anti-68kDa Neurofilament/NF-L antibody [EP675Y] (ab52989)

All lanes : Anti-68kDa Neurofilament/NF-L antibody [EP675Y] (ab52989) at 1/1000 dilution (Purified)

Lane 1 : Human brain lysate

Lane 2 : Mouse brain lysate

Lane 3 : Rat brain lysate

Lysates/proteins at 15 µg per lane.

Secondary

All lanes : Goat Anti-Rabbit IgG (HRP) with minimal cross-reactivity with human IgG at 1/2000 dilution

Predicted band size: 61 kDa

Observed band size: 68 kDa

Blocking buffer: 5% NFDm/TBST

Please note: All products are "FOR RESEARCH USE ONLY. NOT FOR USE IN DIAGNOSTIC PROCEDURES"

Our Abpromise to you: Quality guaranteed and expert technical support

- Replacement or refund for products not performing as stated on the datasheet
- Valid for 12 months from date of delivery
- Response to your inquiry within 24 hours

- We provide support in Chinese, English, French, German, Japanese and Spanish
- Extensive multi-media technical resources to help you
- We investigate all quality concerns to ensure our products perform to the highest standards

If the product does not perform as described on this datasheet, we will offer a refund or replacement. For full details of the Abpromise, please visit <https://www.abcam.cn/abpromise> or contact our technical team.

Terms and conditions

- Guarantee only valid for products bought direct from Abcam or one of our authorized distributors