


Anti-4E-T antibody ab6034

[1 Abreviews](#) [4 References](#) [2 图像](#)

概述

产品名称	Anti-4E-T抗体
描述	山羊多克隆抗体to 4E-T
宿主	Goat
经测试应用	适用于: IHC-P, WB
种属反应性	与反应: Human 预测可用于: Mouse 
免疫原	Synthetic peptide corresponding to Human 4E-T aa 950 to the C-terminus (C terminal). (NP_001157974.1) Database link: NP_062817.2

 [Run BLAST with](#)

 [Run BLAST with](#)

常规说明

The Life Science industry has been in the grips of a reproducibility crisis for a number of years. Abcam is leading the way in addressing this with our range of recombinant monoclonal antibodies and knockout edited cell lines for gold-standard validation. Please check that this product meets your needs before purchasing.

If you have any questions, special requirements or concerns, please send us an inquiry and/or contact our Support team ahead of purchase. Recommended alternatives for this product can be found below, along with publications, customer reviews and Q&As

性能

形式	Liquid
存放说明	Shipped at 4°C. Upon delivery aliquot and store at -20°C or -80°C. Avoid repeated freeze / thaw cycles.
存储溶液	pH: 7.30 Preservative: 0.02% Sodium azide Constituents: Tris buffered saline, 0.5% BSA
纯度	Immunogen affinity purified
纯化说明	Purified from goat serum by ammonium sulphate precipitation followed by antigen affinity chromatography using the immunizing peptide.
克隆	多克隆
同种型	IgG

应用

The Abpromise guarantee **Abpromise™**承诺保证使用ab6034于以下的经测试应用

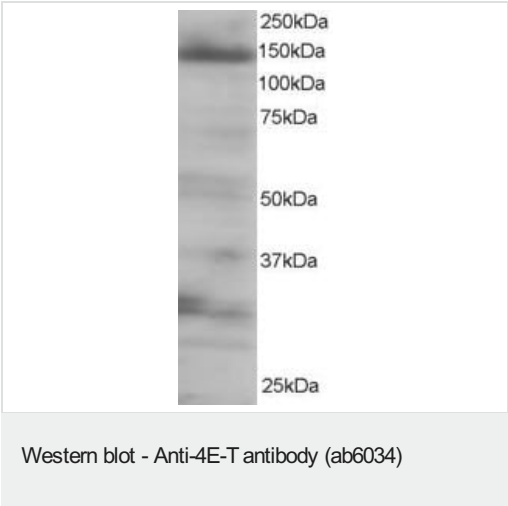
“应用说明”部分 下显示的仅为推荐的起始稀释度;实际最佳的稀释度/浓度应由使用者检定。

应用	Ab评论	说明
IHC-P		Use a concentration of 5 µg/ml.
WB		Use a concentration of 0.25 - 0.5 µg/ml. Detects a band of approximately 140-150 kDa. A 1 hour primary incubation is recommended for this product. The predicted molecular weight is 108 kDa according to NP_062817, however our observation agrees with that of Dostie et al, PMID: 10856257.

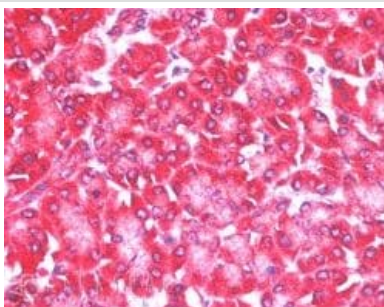
靶标

功能	Nucleoplasmic shuttling protein. Mediates the nuclear import of EIF4E by a piggy-back mechanism.
组织特异性	Widely expressed.
细胞定位	Cytoplasm. Nucleus. Predominantly cytoplasmic. Shuttles between the nucleus and the cytoplasm in a CRM1-dependent manner.

图片



ab6034 at 0.25µg/ml staining approximately 140-150kDa band of 4E-T in HEK293 Lysate by Western blot (ECL). ab6034 at 0.25µg/ml staining approximately 140-150kDa band of EIF4ENIF1 in HEK293 Lysate by Western blot (ECL).



Immunohistochemistry (Formalin/PFA-fixed paraffin-embedded sections) - Anti-4E-T antibody (ab6034)

ab6034 at 5ug/ml staining 4E-T in human pancreas tissue section by Immunohistochemistry (Formalin/PFA fixed paraffin-embedded sections). Tissue underwent antigen retrieval in steam with citrate buffer (pH 6.0). The AP-staining procedure was used for detection.

Please note: All products are "FOR RESEARCH USE ONLY. NOT FOR USE IN DIAGNOSTIC PROCEDURES"

Our Abpromise to you: Quality guaranteed and expert technical support

- Replacement or refund for products not performing as stated on the datasheet
- Valid for 12 months from date of delivery
- Response to your inquiry within 24 hours
- We provide support in Chinese, English, French, German, Japanese and Spanish
- Extensive multi-media technical resources to help you
- We investigate all quality concerns to ensure our products perform to the highest standards

If the product does not perform as described on this datasheet, we will offer a refund or replacement. For full details of the Abpromise, please visit <https://www.abcam.cn/abpromise> or contact our technical team.

Terms and conditions

- Guarantee only valid for products bought direct from Abcam or one of our authorized distributors