

Anti-4-1BBL antibody ab64912

4 References 2 图像

| | |
|-------|---|
| 概述 | |
| 产品名称 | Anti-4-1BBL抗体 |
| 描述 | 兔多克隆抗体to 4-1BBL |
| 宿主 | Rabbit |
| 经测试应用 | 适用于: ELISA, WB, ICC/IF, IHC-P |
| 种属反应性 | 与反应: Human |
| 免疫原 | Synthetic peptide corresponding to Human 4-1BBL (internal sequence). |
| 常规说明 | <p>The Life Science industry has been in the grips of a reproducibility crisis for a number of years. Abcam is leading the way in addressing this with our range of recombinant monoclonal antibodies and knockout edited cell lines for gold-standard validation. Please check that this product meets your needs before purchasing.</p> <p>If you have any questions, special requirements or concerns, please send us an inquiry and/or contact our Support team ahead of purchase. Recommended alternatives for this product can be found below, along with publications, customer reviews and Q&As</p> |
| 性能 | |
| 形式 | Liquid |
| 存放说明 | Shipped at 4°C. Store at -20°C. Stable for 12 months at -20°C. |
| 存储溶液 | pH: 7.40 Preservative: 0.02% Sodium azide Constituents: PBS, 50% Glycerol (glycerin, glycerine), 0.87% Sodium chloride |
| 纯度 | Without Mg2+ and Ca2+ |
| 克隆 | Immunogen affinity purified |
| 同种型 | 多克隆 IgG |
| 应用 | |

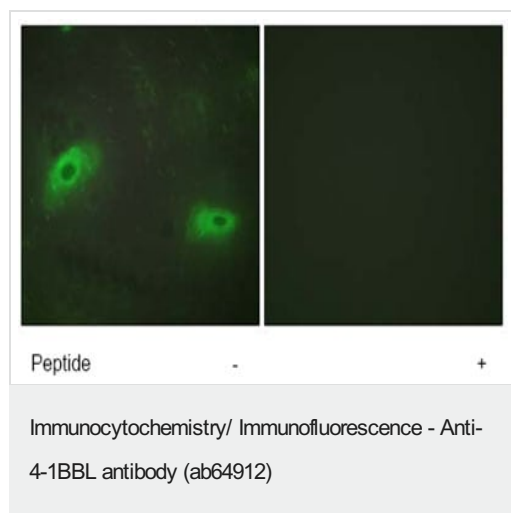
“应用说明”部分 下显示的仅为推荐的起始稀释度;实际最佳的稀释度/浓度应由使用者检定。

| 应用 | Ab评论 | 说明 |
|--------|------|--|
| ELISA | | Use at an assay dependent concentration. |
| WB | | 1/500 - 1/1000. Detects a band of approximately 25 kDa (predicted molecular weight: 27 kDa). |
| ICC/IF | | 1/500 - 1/1000. |
| IHC-P | | Use at an assay dependent concentration. PubMed: 25409517 |

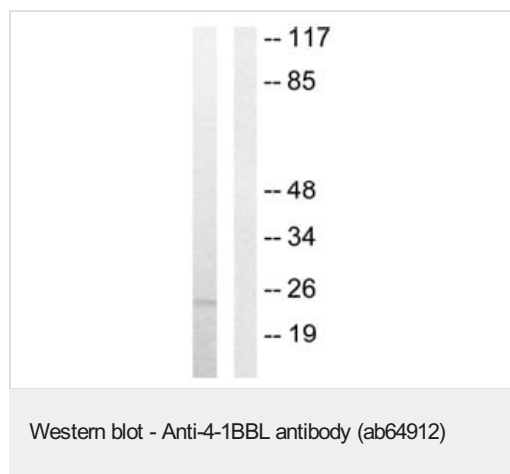
靶标

| | |
|-------|--|
| 功能 | Cytokine that binds to TNFRSF9. Induces the proliferation of activated peripheral blood T-cells. May have a role in activation-induced cell death (AICD). May play a role in cognate interactions between T-cells and B-cells/macrophages. |
| 组织特异性 | Expressed in brain, placenta, lung, skeletal muscle and kidney. |
| 序列相似性 | Belongs to the tumor necrosis factor family. |
| 细胞定位 | Membrane. |

图片



ab64912, at a 1/500 dilution, staining Human 4-1BBL in HeLa cells, by Immunofluorescence, with (+) or without (-) immunising peptide.



All lanes : Anti-4-1BBL antibody (ab64912) at 1/500 dilution

Lane 1 : Extracts from HUVEC cells

Lane 2 : Extracts from HUVEC cells with immunising peptide at 5 μ g

Lysates/proteins at 5 μ g per lane.

Predicted band size: 27 kDa

Observed band size: 25 kDa

Please note: All products are "FOR RESEARCH USE ONLY. NOT FOR USE IN DIAGNOSTIC PROCEDURES"

Our Abpromise to you: Quality guaranteed and expert technical support

- Replacement or refund for products not performing as stated on the datasheet
- Valid for 12 months from date of delivery
- Response to your inquiry within 24 hours
- We provide support in Chinese, English, French, German, Japanese and Spanish
- Extensive multi-media technical resources to help you
- We investigate all quality concerns to ensure our products perform to the highest standards

If the product does not perform as described on this datasheet, we will offer a refund or replacement. For full details of the Abpromise, please visit <https://www.abcam.cn/abpromise> or contact our technical team.

Terms and conditions

- Guarantee only valid for products bought direct from Abcam or one of our authorized distributors