

### Anti-15 Lipoxygenase 1 antibody [OTI3G8] ab119774

★★★★★ [1 Abreviews](#) [24 References](#) [8 图像](#)

#### 概述

产品名称	Anti-15 Lipoxygenase 1抗体[OTI3G8]
描述	小鼠单克隆抗体[OTI3G8] to 15 Lipoxygenase 1
宿主	Mouse
经测试应用	适用于: IHC-P, ICC/IF
种属反应性	与反应: Human, African green monkey
免疫原	Recombinant full length, Human 15 Lipoxygenase 1 produced in HEK293T cells (NP_001131).
阳性对照	HEK293T cells transfected with pCMV6-ENTRY 15 Lipoxygenase 1 cDNA; HepG2, HeLa, A549, COS7, MDCK, PC12 and MCF7 cell extracts; Human breast, Human pancreas carcinoma, Human thyroid carcinoma, Human endometrium, Human endometrium adenocarcinoma, Human prostate carcinoma and Human bladder carcinoma; COS7 cells transiently transfected by pCMV6-ENTRY 15 Lipoxygenase 1.
常规说明	<p>The clone number has been updated from 3G8 to OTI3G8, both clone numbers name the same clone.</p> <p>The Life Science industry has been in the grips of a reproducibility crisis for a number of years. Abcam is leading the way in addressing this with our range of recombinant monoclonal antibodies and knockout edited cell lines for gold-standard validation. Please check that this product meets your needs before purchasing.</p> <p>If you have any questions, special requirements or concerns, please send us an inquiry and/or contact our Support team ahead of purchase. Recommended alternatives for this product can be found below, along with publications, customer reviews and Q&amp;As</p>

#### 性能

形式	Liquid
存放说明	Shipped at 4°C. Upon delivery aliquot and store at -20°C. Avoid repeated freeze / thaw cycles.
存储溶液	<p>pH: 7.30</p> <p>Preservative: 0.02% Sodium azide</p> <p>Constituents: PBS, 1% BSA, 50% Glycerol</p>
纯度	Protein A purified
纯化说明	Purified from TCS
克隆	单克隆

克隆编号 OTI3G8

同种型 IgG2b

应用

The Abpromise guarantee      **Abpromise™**承诺保证使用ab119774于以下的经测试应用

“应用说明”部分 下显示的仅为推荐的起始稀释度;实际最佳的稀释度/浓度应由使用者检定。

应用	Ab评论	说明
IHC-P	★★★★★ (1)	1/150.
ICC/IF		1/100.

靶标

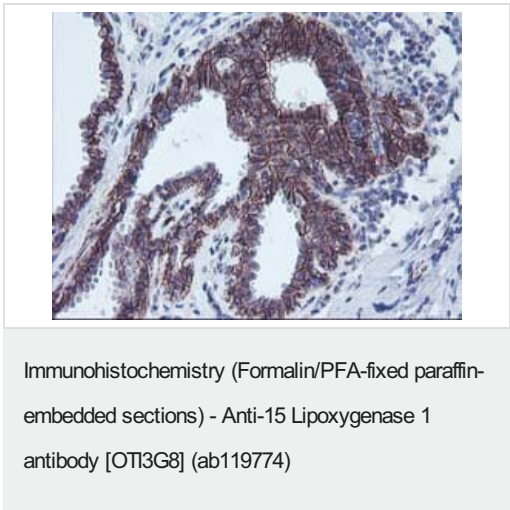
功能      Converts arachidonic acid to 15S-hydroperoxyeicosatetraenoic acid. Also acts on C-12 of arachidonate as well as on linoleic acid.

通路      Lipid metabolism; leukotriene D4 biosynthesis.

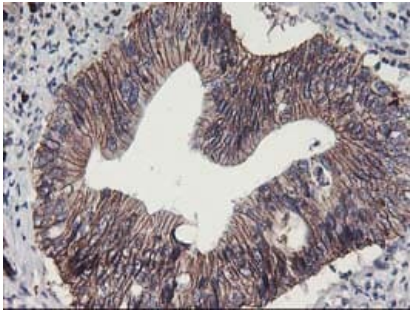
序列相似性      Belongs to the lipoxygenase family.  
Contains 1 lipoxygenase domain.  
Contains 1 PLAT domain.

细胞定位      Cytoplasm.

图片

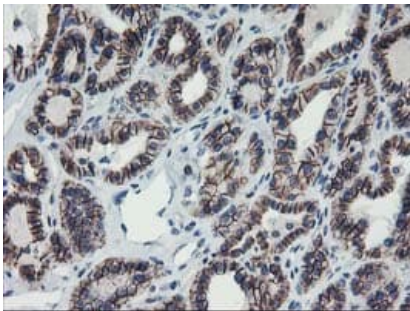


ab119774 at 1/150 dilution, staining 15 Lipoxygenase 1 in formalin-fixed, paraffin-embedded Human breast tissue by Immunohistochemistry.



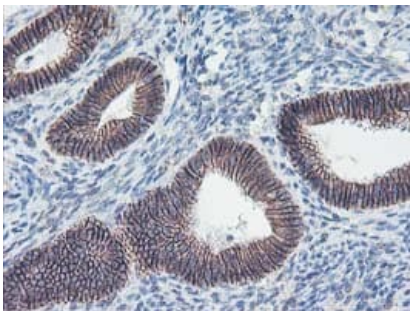
Immunohistochemistry (Formalin/PFA-fixed paraffin-embedded sections) - Anti-15 Lipoxygenase 1 antibody [OTI3G8] (ab119774)

ab119774 at 1/150 dilution, staining 15 Lipoxygenase 1 in formalin-fixed, paraffin-embedded Human pancreas carcinoma tissue by Immunohistochemistry.



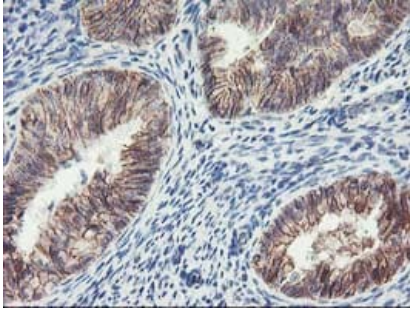
Immunohistochemistry (Formalin/PFA-fixed paraffin-embedded sections) - Anti-15 Lipoxygenase 1 antibody [OTI3G8] (ab119774)

ab119774 at 1/150 dilution, staining 15 Lipoxygenase 1 in formalin-fixed, paraffin-embedded Human thyroid carcinoma tissue by Immunohistochemistry.



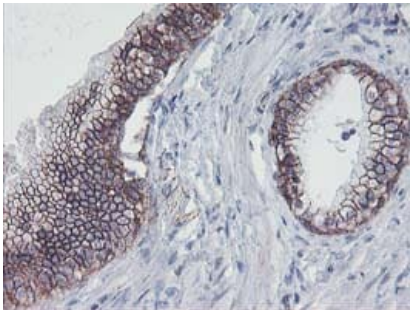
Immunohistochemistry (Formalin/PFA-fixed paraffin-embedded sections) - Anti-15 Lipoxygenase 1 antibody [OTI3G8] (ab119774)

ab119774 at 1/150 dilution, staining 15 Lipoxygenase 1 in formalin-fixed, paraffin-embedded Human endometrium tissue by Immunohistochemistry.



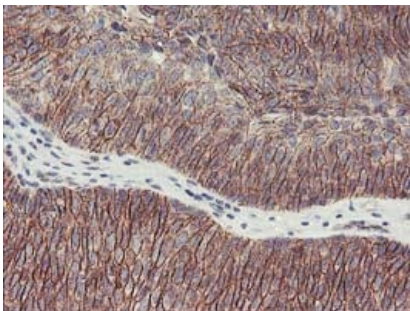
Immunohistochemistry (Formalin/PFA-fixed paraffin-embedded sections) - Anti-15 Lipoxygenase 1 antibody [OTI3G8] (ab119774)

ab119774 at 1/150 dilution, staining 15 Lipoxygenase 1 in formalin-fixed, paraffin-embedded Human endometrium adenocarcinoma tissue by Immunohistochemistry.



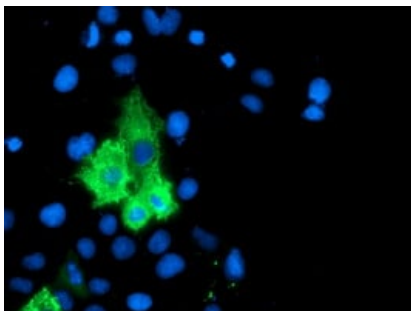
Immunohistochemistry (Formalin/PFA-fixed paraffin-embedded sections) - Anti-15 Lipoxygenase 1 antibody [OTI3G8] (ab119774)

ab119774 at 1/150 dilution, staining 15 Lipoxygenase 1 in formalin-fixed, paraffin-embedded Human prostate carcinoma tissue by Immunohistochemistry.



Immunohistochemistry (Formalin/PFA-fixed paraffin-embedded sections) - Anti-15 Lipoxygenase 1 antibody [OTI3G8] (ab119774)

ab119774 at 1/150 dilution, staining 15 Lipoxygenase 1 in formalin-fixed, paraffin-embedded Human bladder carcinoma tissue by Immunohistochemistry.



ab119774 at 1/100, staining 15 Lipoxygenase 1 in COS7 cells transiently transfected with pCMV6-ENTRY 15 Lipoxygenase 1, by immunofluorescence.

Immunocytochemistry/ Immunofluorescence - Anti-15 Lipoxygenase 1 antibody [OTI3G8] (ab119774)

**Please note:** All products are "FOR RESEARCH USE ONLY. NOT FOR USE IN DIAGNOSTIC PROCEDURES"

#### Our Abpromise to you: Quality guaranteed and expert technical support

---

- Replacement or refund for products not performing as stated on the datasheet
- Valid for 12 months from date of delivery
- Response to your inquiry within 24 hours
- We provide support in Chinese, English, French, German, Japanese and Spanish
- Extensive multi-media technical resources to help you
- We investigate all quality concerns to ensure our products perform to the highest standards

If the product does not perform as described on this datasheet, we will offer a refund or replacement. For full details of the Abpromise, please visit <https://www.abcam.cn/abpromise> or contact our technical team.

#### Terms and conditions

---

- Guarantee only valid for products bought direct from Abcam or one of our authorized distributors