


Anti-14-3-3 gamma/YWHAG antibody [EPR9655(B)] ab137106

重组 RabMAb

2 References 4 图像

概述

产品名称	Anti-14-3-3 gamma/YWHAG抗体[EPR9655(B)]
描述	兔单克隆抗体[EPR9655(B)] to 14-3-3 gamma/YWHAG
宿主	Rabbit
经测试应用	适用于: Flow Cyt (Intra), WB 不适用于: ICC/IF, IHC-P or IP
种属反应性	与反应: Human 预测可用于: Mouse, Rat 
免疫原	Synthetic peptide within Human 14-3-3 gamma/YWHAG aa 150-250. The exact sequence is proprietary.
阳性对照	HeLa, A431, 293T and K562 cell lysates; K562 cells. WB: 14-3-3 gamma (YWHAG) Human Recombinant Protein
常规说明	This product is a recombinant monoclonal antibody, which offers several advantages including: <ul style="list-style-type: none"> - High batch-to-batch consistency and reproducibility - Improved sensitivity and specificity - Long-term security of supply - Animal-free production For more information see here . Our RabMAb [®] technology is a patented hybridoma-based technology for making rabbit monoclonal antibodies. For details on our patents, please refer to RabMAb[®] patents .

性能

形式	Liquid
存放说明	Shipped at 4°C. Store at -20°C.
存储溶液	pH: 7.2 Preservative: 0.01% Sodium azide Constituents: 9% PBS, 40% Glycerol (glycerin, glycerine), 0.05% BSA, 50% Tissue culture supernatant
纯度	Tissue culture supernatant
克隆	单克隆

克隆编号EPR9655(B)

同种型IgG

应用

The Abpromise guarantee

Abpromise™承诺保证使用ab137106于以下的经测试应用

“应用说明”部分 下显示的仅为推荐的起始稀释度;实际最佳的稀释度/浓度应由使用者检定。

应用	Ab评论	说明
Flow Cyt (Intra)		1/10 - 1/100. ab172730 - Rabbit monoclonal IgG, is suitable for use as an isotype control with this antibody.
WB		1/1000 - 1/10000. Predicted molecular weight: 28 kDa.

应用说明

Is unsuitable for ICC/IF,IHC-P or IP.

靶标

功能

Adapter protein implicated in the regulation of a large spectrum of both general and specialized signaling pathways. Binds to a large number of partners, usually by recognition of a phosphoserine or phosphothreonine motif. Binding generally results in the modulation of the activity of the binding partner.

组织特异性

Highly expressed in brain, skeletal muscle, and heart.

序列相似性

Belongs to the 14-3-3 family.

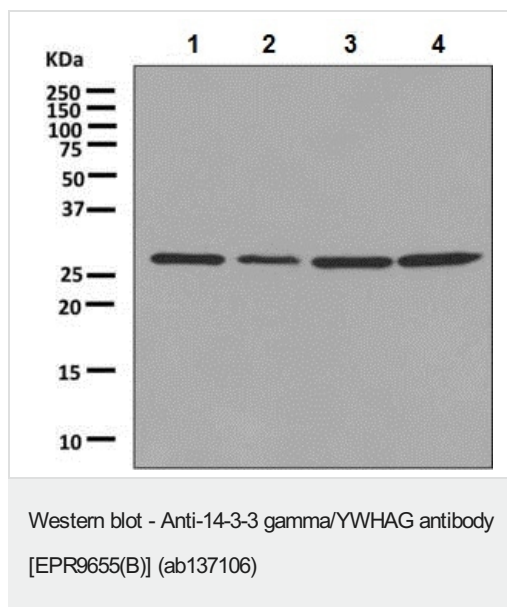
翻译后修饰

Phosphorylated by various PKC isozymes.

细胞定位

Cytoplasm.

图片



All lanes : Anti-14-3-3 gamma/YWHAG antibody [EPR9655(B)] (ab137106) at 1/1000 dilution

Lane 1 : HeLa cell lysate

Lane 2 : A431 cell lysate

Lane 3 : 293T cell lysate

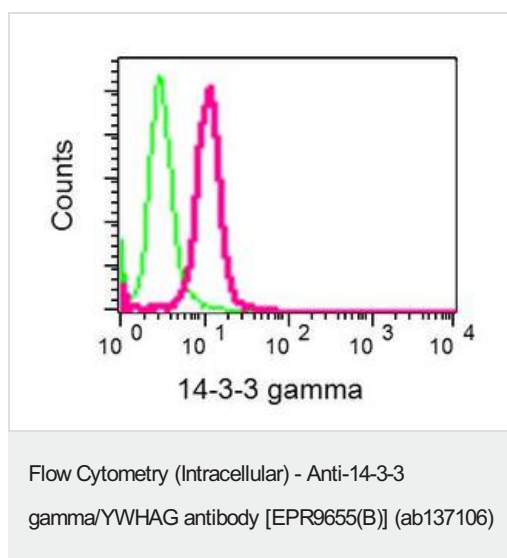
Lane 4 : K562 cell lysate

Lysates/proteins at 10 µg per lane.

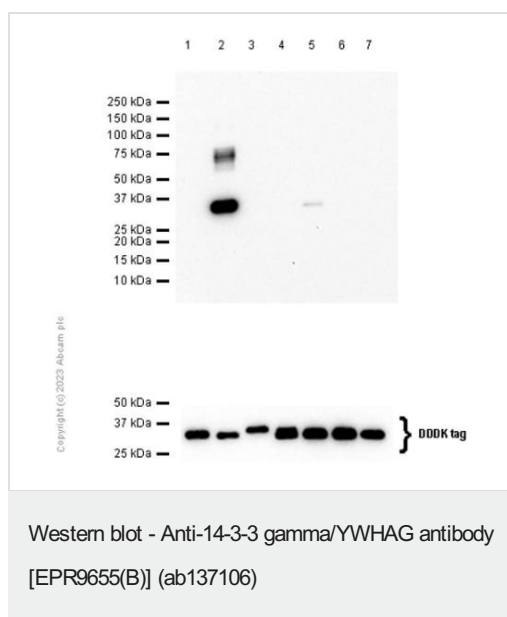
Secondary

All lanes : HRP-labelled Goat anti-Rabbit at 1/2000 dilution

Predicted band size: 28 kDa



Intracellular flow cytometric analysis of K562 cells labelling 14-3-3-gamma with ab137106 at 1/10 dilution (red). Negative Rabbit IgG control shown in green.



All lanes : Anti-14-3-3 gamma/YWHAG antibody [EPR9655(B)] (ab137106) at 1/1000 dilution

Lane 1 : 14-3-3 beta (YWHAB) Human Recombinant Protein 50 ng, with DDDK tagged

Lane 2 : 14-3-3 gamma (YWHAG) Human Recombinant Protein 50 ng, with DDDK tagged

Lane 3 : 14-3-3 epsilon (YWHA E) Human Recombinant Protein 50 ng, with DDDK tagged

Lane 4 : 14-3-3 zeta (YWHA Z) Human Recombinant Protein 50 ng, with DDDK tagged

Lane 5 : 14-3-3 eta (YWHA H) Human Recombinant Protein 50 ng, with DDDK tagged

Lane 6 : 14-3-3 theta (YWHA Q) Human Recombinant Protein 50 ng, with DDDK tagged

Lane 7 : 14-3-3 sigma (SFN) Human Recombinant Protein 50 ng,
with DDDK tagged

Secondary

All lanes : Goat Anti-Rabbit IgG H&L (HRP) (**ab97051**) at 1/20000
dilution

Predicted band size: 28 kDa

Observed band size: 28 kDa

Exposure time: 20 seconds

Blocking and dilution buffer: 5% NFDM/TBST

Why choose a recombinant antibody?



- Research with confidence**
Consistent and reproducible results
- Long-term and scalable supply**
Recombinant technology
- Success from the first experiment**
Confirmed specificity
- Ethical standards compliant**
Animal-free production

Anti-14-3-3 gamma/YWHAG antibody [EPR9655(B)]
(ab137106)

Please note: All products are "FOR RESEARCH USE ONLY. NOT FOR USE IN DIAGNOSTIC PROCEDURES"

Our Abpromise to you: Quality guaranteed and expert technical support

- Replacement or refund for products not performing as stated on the datasheet
- Valid for 12 months from date of delivery
- Response to your inquiry within 24 hours
- We provide support in Chinese, English, French, German, Japanese and Spanish
- Extensive multi-media technical resources to help you
- We investigate all quality concerns to ensure our products perform to the highest standards

If the product does not perform as described on this datasheet, we will offer a refund or replacement. For full details of the Abpromise, please visit <https://www.abcam.cn/abpromise> or contact our technical team.

Terms and conditions

- Guarantee only valid for products bought direct from Abcam or one of our authorized distributors