

Mounting Medium for IHC - Aqueous ab64230

[9 References](#) [1 图像](#)

概述

产品名称

封固剂for IHC - Aqueous

经测试应用

适用于: IHC-P

常规说明

Mounting Medium ab64230 is an aqueous mounting medium designed for use with chromogenic tissue and cell staining. It can be used with chromogens such as Fast-Red or AEC that require an aqueous mounting medium, or those that do not, such as DAB. When it is dry, it generates an even surface and can be used without a glass coverslip.

Mounting media products

For fluorescent cell and tissue staining, Abcam recommends aqueous, anti-fade [Fluorescence Mounting Medium ab104135](#), [Mounting Medium with DAPI ab104139](#), and [Mounting Medium with PI ab104129](#). For thick sections or tissues containing lots of fat, we recommend [Glycerol Mounting Medium with DAPI ab188804](#).

For chromogenic immunohistochemistry, such as with DAB, AEC, or Fast Red, we recommend this product, Mounting Medium ab64230, or organic [Limonene Mounting Medium ab104141](#).

IHC protocol suitable for use with Mounting Medium ab64230:

1. Deparaffinize and rehydrate formalin-fixed paraffin-embedded tissue section.
2. Use appropriate [antigen retrieval buffer or enzyme](#) (primary antibody dependent) to treat sections. Wash 3 times in buffer.
3. Add enough [hydrogen peroxide blocking solution](#) to cover the sections. Incubate for 10 minutes. Wash 2 times in buffer. If necessary, use [avidin biotin blocking](#).
4. Apply [protein block](#) (or [normal serum](#) from same species as secondary antibody) and incubate for 5 minutes at room temperature to block nonspecific background staining. Wash once in buffer.
5. Apply primary antibody in [antibody diluent](#) and incubate.
6. Wash 4 times in buffer. Incubate slide with [biotinylated secondary antibody](#) (or [HRP polymer secondary antibody](#) and skip step 7). Wash 4 times in buffer.
7. Apply [streptavidin-HRP](#) and incubate for 10 minutes at room temperature.
8. Rinse 4 times in buffer. Place slide in [DAB substrate](#) or [AEC Substrate](#) and incubate until desired color is achieved (1-10 mins). Rinse 4 times in buffer.
9. Add enough drops of [hematoxylin](#) to cover the section. Incubate for 1 minute.

10. Rinse 7-8 times in tap water. Add Mounting Medium ab64230 to cover the section.

Find complete IHC kits, and reagents for antigen retrieval, blocking, signal amplification, visualization, counterstaining, and mounting in the [IHC kits and reagents guide](#).

性能

形式	Liquid
存放说明	Store at room temperature.
存储溶液	Preservative: 0.1% Sodium azide
Reagent说明	ab64230 is formulated for coverslipping sections. It can be used with chromogens such as Fast-Red or AEC that require an aqueous mounting medium, or those that do not, such as DAB. When it is dry, it generates an even surface and can be used without a glass coverslip.

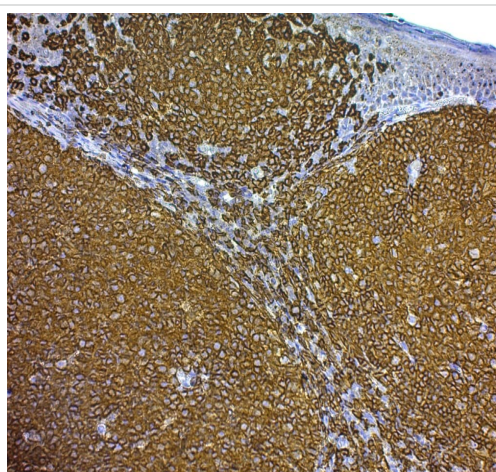
应用

The Abpromise guarantee **Abpromise™** 承诺保证使用ab64230于以下的经测试应用

“应用说明”部分 下显示的仅为推荐的起始稀释度；实际最佳的稀释度/浓度应由使用者检定。

应用	Ab评论	说明
IHC-P		Use at an assay dependent dilution.

图片



ab64230 Mounting Medium used along with anti-CD20 antibody on Human Tonsil

Immunohistochemistry (Formalin/PFA-fixed paraffin-embedded sections) - Mounting Medium (ab64230)

Please note: All products are "FOR RESEARCH USE ONLY. NOT FOR USE IN DIAGNOSTIC PROCEDURES"

Our Abpromise to you: Quality guaranteed and expert technical support

- Replacement or refund for products not performing as stated on the datasheet
- Valid for 12 months from date of delivery
- Response to your inquiry within 24 hours

- We provide support in Chinese, English, French, German, Japanese and Spanish
- Extensive multi-media technical resources to help you
- We investigate all quality concerns to ensure our products perform to the highest standards

If the product does not perform as described on this datasheet, we will offer a refund or replacement. For full details of the Abpromise, please visit <https://www.abcam.cn/abpromise> or contact our technical team.

Terms and conditions

- Guarantee only valid for products bought direct from Abcam or one of our authorized distributors