

Mouse Von Willebrand Factor A2 Matched Antibody Pair Kit ab213466

重组

2 图像

概述

产品名称	小鼠Von Willebrand Factor A2抗体对试剂盒
检测方法	Colorimetric
检测类型	ELISA set
灵敏度	5.7 pg/ml
范围	62.5 pg/ml - 4000 pg/ml
种属反应性	与反应: Mouse
产品概述	<p>Mouse Von Willebrand Factor 2 Matched Antibody Pair Kits include a capture and a biotinylated detector antibody pair, along with a calibrated protein standard, suitable for sandwich ELISA. The Matched Antibody Pair Kit can be used to quantify native and recombinant mouse Von Willebrand Factor 2.</p> <p>Optimization of the kit reagents to sample type, immunoassay format or instrumentation may be required. Guidelines for use of this kit in a standard 96-well microplate sandwich ELISA using HRP/TMB system of colorimetric detection is described in this assay procedure for the purposes of quantification.</p> <p>Protocol information and tips on the use of the Matched Antibody Pair kits for sandwich ELISA can be found on our website. An accessory pack can be purchased which includes buffer reagents required to perform 10 x 96-well plate sandwich ELISAs (ab210905).</p> <p>For additional information on the performance of the antibody pair used in this kit, please see our equivalent SimpleStep ELISA kit ab208980. Please note that while the antibody pair is the same provided in the corresponding SimpleStep ELISA Kit, due to differences in their formulation, this antibody pair cannot be used with the consumables provided with our SimpleStep ELISA Kits.</p>
经测试应用	适用于: ELISA, IA
平台	Reagents

性能

存放说明

Store at -20°C. Please refer to protocols.

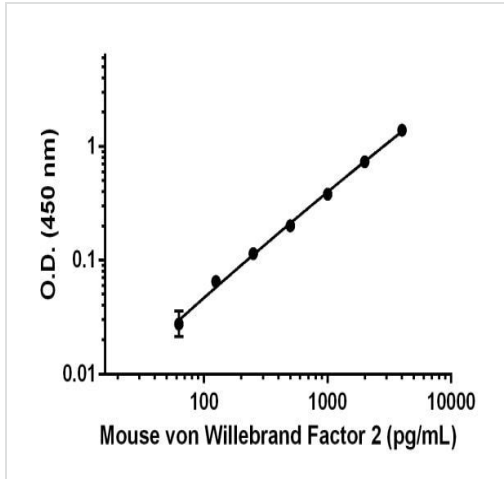
组件	5 x 96 tests
Mouse Von Willebrand Factor 2 Capture Antibody	1 x 50µg
Mouse Von Willebrand Factor 2 Detector Antibody	1 x 12.5µg
Mouse Von Willebrand Factor 2 Lyophilized Protein	1 vial

功能	Important in the maintenance of hemostasis, it promotes adhesion of platelets to the sites of vascular injury by forming a molecular bridge between sub-endothelial collagen matrix and platelet-surface receptor complex GPIb-IX-V. Also acts as a chaperone for coagulation factor VIII, delivering it to the site of injury, stabilizing its heterodimeric structure and protecting it from premature clearance from plasma.
组织特异性	Plasma.
疾病相关	Defects in VWF are the cause of von Willebrand disease (VWD) [MIM:277480]. VWD defines a group of hemorrhagic disorders in which the von Willebrand factor is either quantitatively or qualitatively abnormal resulting in altered platelet function. Symptoms vary depending on severity and disease type but may include prolonged bleeding time, deficiency of factor VIII and impaired platelet adhesion. Type I von Willebrand disease is the most common form and is characterized by partial quantitative plasmatic deficiency of an otherwise structurally and functionally normal Willebrand factor; type II is associated with a qualitative deficiency and functional anomalies of the Willebrand factor; type III is the most severe form and is characterized by total or near-total absence of Willebrand factor in the plasma and cellular compartments, also leading to a profound deficiency of plasmatic factor VIII.
序列相似性	Contains 1 CTCK (C-terminal cystine knot-like) domain. Contains 4 TIL (trypsin inhibitory-like) domains. Contains 3 VWFA domains. Contains 3 VWFC domains. Contains 4 VWFD domains.
结构域	The von Willebrand antigen 2 is required for multimerization of VWF and for its targeting to storage granules.
翻译后修饰	All cysteine residues are involved in intrachain or interchain disulfide bonds. N- and O-glycosylated.
细胞定位	Secreted. Secreted > extracellular space > extracellular matrix. Localized to storage granules.

应用**The Abpromise guarantee****Abpromise™**承诺保证使用ab213466于以下的经测试应用

“应用说明”部分 下显示的仅为推荐的起始稀释度;实际最佳的稀释度/浓度应由使用者检定。

应用	Ab评论	说明
ELISA		Use at an assay dependent concentration.
IA		Use at an assay dependent concentration.



Standard calibration curve. Background subtracted values are graphed.

Mouse Von Willebrand Factor A2 standard curve.

Powered by recombinant antibodies

<p>Research with confidence Consistent and reproducible results</p>	<p>Long-term and scalable supply Recombinant technology</p>
<p>Success from the first experiment Confirmed specificity</p>	<p>Ethical standards compliant Animal-free production</p>

Sandwich ELISA - Mouse Von Willebrand Factor A2
Matched Antibody Pair Kit (ab213466)

To learn more about the advantages of recombinant antibodies see [here](#).

Please note: All products are "FOR RESEARCH USE ONLY. NOT FOR USE IN DIAGNOSTIC PROCEDURES"

Our Abpromise to you: Quality guaranteed and expert technical support

- Replacement or refund for products not performing as stated on the datasheet
- Valid for 12 months from date of delivery
- Response to your inquiry within 24 hours
- We provide support in Chinese, English, French, German, Japanese and Spanish
- Extensive multi-media technical resources to help you
- We investigate all quality concerns to ensure our products perform to the highest standards

If the product does not perform as described on this datasheet, we will offer a refund or replacement. For full details of the Abpromise, please visit <https://www.abcam.cn/abpromise> or contact our technical team.

Terms and conditions

- Guarantee only valid for products bought direct from Abcam or one of our authorized distributors