

# Complex I Enzyme Activity Dipstick Assay Kit ab109720

★★★★★ [1 Abreviews](#) [48 References](#) [4 图像](#)

### 概述

<b>产品名称</b>	Complex I Enzyme Activity Dipstick Assay试剂盒
<b>样品类型</b>	Cell culture supernatant, Cell culture extracts, Tissue
<b>检测类型</b>	Enzyme activity
<b>种属反应性</b>	<b>与反应:</b> Mouse, Rat, Cow, Human
<b>产品概述</b>	<p>Contains 48 dipsticks and necessary components to quantify the activity of the Complex I enzyme complex in human, bovine, rat and mouse samples. The kit includes sufficient materials to generate a standard curve and evaluate several unknown samples.</p> <p>In this assay the specificity of anti-Complex I monoclonal antibodies (mAbs) is combined with the well-characterized Complex I in-gel activity assay that is not rotenone sensitive. First, Complex I is immunocaptured (i.e. immuno-precipitated in active form) on the dipstick. Second, the dipstick is immersed in Complex I activity buffer solution containing NADH as a substrate and nitrotetrazolium blue (NBT) as the electron acceptor. Immunocaptured Complex I oxidizes NADH and the resulting H<sup>+</sup> reduces NBT to form a blue-purple precipitate at the Complex I antibody line on the dipstick. The signal intensity of this precipitate corresponds to the level of Complex I enzyme activity in the sample. Combined with dipstick assay kit for measuring Complex I quantity (<a href="#">ab109722/MS131</a> for human sample; <a href="#">ab109875/MS133</a> for rodent samples), it is possible to determine the relative specific activity of immunocaptured Complex I. The signal intensity is best measured by a dipstick reader or may be analyzed by a standard imaging system.</p>
<b>经测试应用</b>	<b>适用于:</b> Functional Studies
<b>平台</b>	Reagents

### 性能

**存放说明** Store at +4°C. Please refer to protocols.

组件	48 tests
10X Blocking Buffer	1 x 400µl
96-well microplate	2 units
Dipsticks	1 x 48 units

组件	48 tests
Extraction Buffer (ab260490)	1 x 15ml
NADH (lyophilized)	1 vial
NBT (Lyophilized) - 10mg	1 vial
Reaction Buffer	1 x 15ml
Wash buffer	1 x 2ml

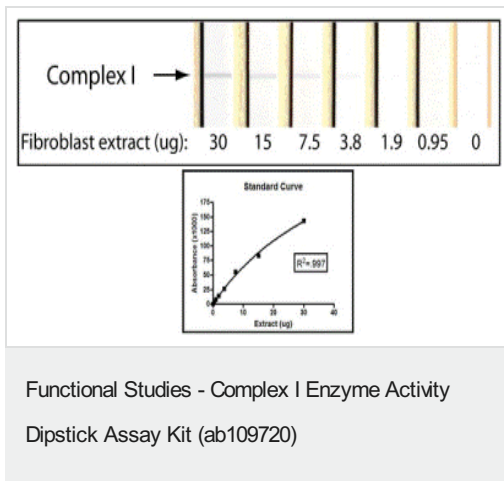
## 应用

**The Abpromise guarantee**      **Abpromise™** 承诺保证使用 ab109720 于以下的经测试应用

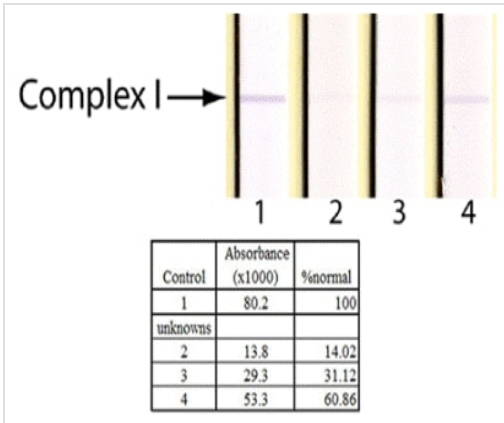
“应用说明”部分下显示的仅为推荐的起始稀释度；实际最佳的稀释度/浓度应由使用者检定。

应用	Ab评论	说明
<b>Functional Studies</b>		Use at an assay dependent dilution.

## 图片

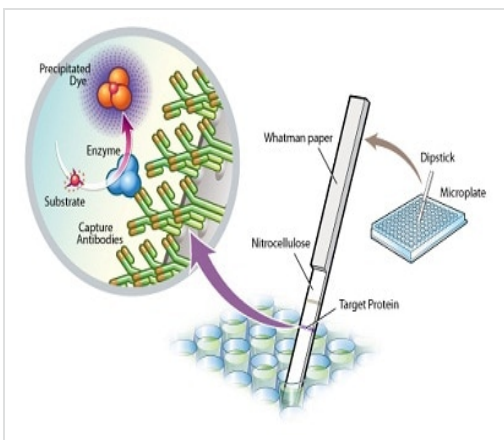


An example using ab109720 to measure Complex I activity in human fibroblast samples. Developed dipsticks from a 1:2 dilution series using a positive control sample and the associated standard curve. Starting material was 30 µg of fibroblast protein extract.



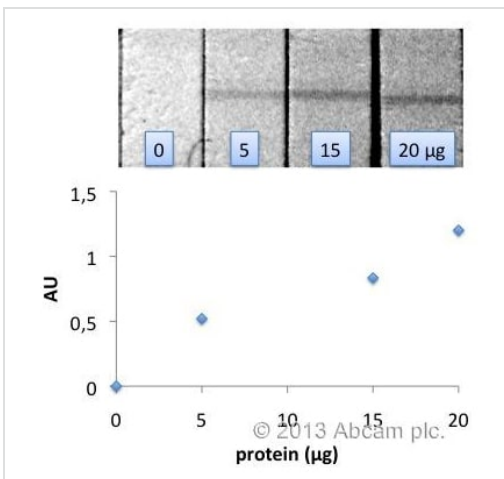
Functional Studies - Complex I Enzyme Activity  
Dipstick Assay Kit (ab109720)

An example using ab109720 to measure Complex I activity in human fibroblast samples. Based on the standard curve, 15 µg of protein extract were loaded onto a dipstick for each sample. The figure shows four developed dipsticks, a control sample (1) and three unknowns (2-4). The analysis of the signal intensity and interpolation from the standard curve showed that the unknown samples have between 14-61% of normal Complex I activity levels.



Functional Studies - Complex I Enzyme Activity  
Dipstick Assay Kit - 48 tests (ab109720)

Abcam's enzyme activity assays apply a novel approach, whereby target enzymes are first immunocaptured from tissue or cell samples before subsequent functional analysis. Dipstick ELISA Kits extend this concept by utilizing the well-established lateral flow concept, wherein capture antibodies are striped onto nitrocellulose membrane and a wicking pad draws the sample through the antibody bands. All of our ELISA kits utilize highly validated monoclonal antibodies and proprietary buffers, which are able to capture even very large enzyme complexes in their fully-intact, functionally-active states.



Functional Studies - Complex I Enzyme Activity  
Dipstick Assay Kit (ab109720)

This image is courtesy of an Abreview submitted by Christian Marx

ab109720 was used to quantify complex I activity in HCT116 cells. The kit was used as described in the manual.

Shortly: cells were scraped and lysed in extraction buffer. Cell fragments were removed by centrifugation and protein concentration was measured by Bradford assay. Increasing amounts of protein (as shown in image) were applied to each well as standard curve. A standard flatbed scanner was used instead of a Dipstick-reader. Due to the low contrast of the resulting bands, the brightness and contrast of the image was adjusted afterwards. Developed for 45 minutes as recommended by the manual.

## **Our Abpromise to you: Quality guaranteed and expert technical support**

---

- Replacement or refund for products not performing as stated on the datasheet
- Valid for 12 months from date of delivery
- Response to your inquiry within 24 hours
  
- We provide support in Chinese, English, French, German, Japanese and Spanish
- Extensive multi-media technical resources to help you
- We investigate all quality concerns to ensure our products perform to the highest standards

If the product does not perform as described on this datasheet, we will offer a refund or replacement. For full details of the Abpromise, please visit <https://www.abcam.cn/abpromise> or contact our technical team.

## **Terms and conditions**

---

- Guarantee only valid for products bought direct from Abcam or one of our authorized distributors