

STAT4 (Tyr693) In-Cell ELISA Kit ab126428

2 图像

概述

产品名称	STAT4 (Tyr693) In-Cell ELISA试剂盒
检测方法	Colorimetric
样品类型	Adherent cells
检测类型	Cell-based (qualitative)
检测时间	5h 10m
实验步骤	Multiple steps standard assay
种属反应性	与反应: Mouse, Human
产品概述	<p>ab126428 is a very rapid, convenient and sensitive assay kit that can monitor the activation or function of important biological pathways in cells. It can be used for measuring the relative amount of STAT4 (Tyr693) phosphorylation and screening the effects of various treatments, inhibitors (such as siRNA or chemicals), or activators in cultured human and mouse cell lines. By determining STAT4 protein phosphorylation in your experimental model system, you can verify pathway activation in your cell lines without spending excess time and effort in preparing cell lysate and performing an analysis of Western Blot.</p> <p>In the STAT4 (Tyr693) In-Cell ELISA Kit, cells are seeded into a 96 well tissue culture plate. The cells are fixed after various treatments, inhibitors or activators. After blocking, Anti Phospho-STAT4 (Tyr693) or Anti-STAT4 (primary antibody) is pipetted into the wells and incubated. The wells are washed, and HRP-conjugated anti-Mouse IgG or HRP-conjugated anti-rabbit IgG (secondary antibody) is added to the wells. The wells are washed again, a TMB substrate solution is added to the wells and color develops in proportion to the amount of protein. The Stop Solution changes the color from blue to yellow, and the intensity of the color is measured at 450 nm.</p>
平台	Microplate

性能

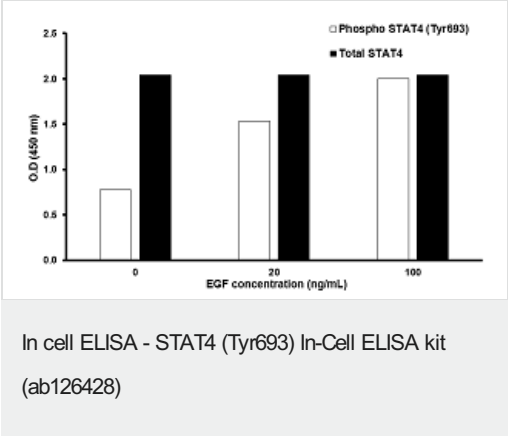
存放说明Store at -20°C. Please refer to protocols.

组件	1 x 96 tests
Blocking Buffer Concentrate (5X)	1 x 20ml
Fixing Solution	1 x 30ml

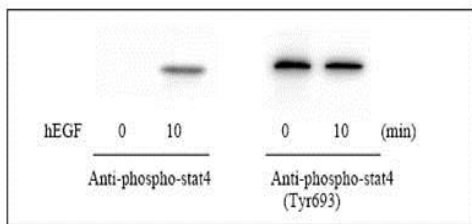
组件	1 x 96 tests
HRP-conjugated Anti-Mouse IgG Concentrate	1 x 10µl
Anti-Rabbit IgG Concentrate (Item I-1)	1 x 10µl
Uncoated 96-well Microplate	1 unit
Mouse Anti-STAT4 Concentrate (Item H)	1 x 7µl
Quenching Buffer Concentrate (30x)	1 x 2ml
Rabbit Anti-Phospho-STAT4 (Tyr693) Concentrate (Item G)	1 x 10µl
Stop Solution	1 x 14ml
TMB One-Step Substrate Reagent	1 x 12ml
Wash Buffer A Concentrate (20X)	1 x 30ml
Wash Buffer B Concentrate (20X)	1 x 30ml

功能	Carries out a dual function: signal transduction and activation of transcription. Involved in IL12 signaling.
疾病相关	Systemic lupus erythematosus 11 Rheumatoid arthritis
序列相似性	Belongs to the transcription factor STAT family. Contains 1 SH2 domain.
翻译后修饰	Tyrosine phosphorylated. Serine phosphorylation is also required for maximal transcriptional activity.
细胞定位	Cytoplasm. Nucleus. Translocated into the nucleus in response to phosphorylation.

图片



A431 cells were stimulated by different concentrations of recombinant human EGF for 10 minutes at 37°C



Western blot - STAT4 (Tyr693) In-Cell ELISA Kit  
(ab126428)

Western blot analysis of extracts from 100 ng/ml hEGF treated A431 cells. Phospho-STAT4 (Tyr693) and STAT4 antibodies were used in both detection assays.

**Please note:** All products are "FOR RESEARCH USE ONLY. NOT FOR USE IN DIAGNOSTIC PROCEDURES"

### Our Abpromise to you: Quality guaranteed and expert technical support

- Replacement or refund for products not performing as stated on the datasheet
- Valid for 12 months from date of delivery
- Response to your inquiry within 24 hours
- We provide support in Chinese, English, French, German, Japanese and Spanish
- Extensive multi-media technical resources to help you
- We investigate all quality concerns to ensure our products perform to the highest standards

If the product does not perform as described on this datasheet, we will offer a refund or replacement. For full details of the Abpromise, please visit <https://www.abcam.cn/abpromise> or contact our technical team.

### Terms and conditions

- Guarantee only valid for products bought direct from Abcam or one of our authorized distributors