

Rat Prolactin R ELISA Kit (PRLR) ab113351

[2 References](#) [1 图像](#)

概述

产品名称	大鼠Prolactin R ELISA试剂盒(PRLR)
检测方法	Colorimetric
样品类型	Cell culture supernatant
检测类型	Sandwich (quantitative)
灵敏度	< 0.4 ng/ml
范围	0.512 ng/ml - 50 ng/ml
回收率	100 %

特定样本回收率

样品类型	平均%	范围
Cell culture supernatant	125.4	117% - 141%

实验步骤 Multiple steps standard assay

种属反应性 与反应: Rat

产品概述 Abcam's Prolactin R Rat ELISA (Enzyme-Linked Immunosorbent Assay) kit is an *in vitro* enzyme-linked immunosorbent assay for the quantitative measurement of rat Prolactin R in cell culture supernatants.

This assay employs an antibody specific for rat Prolactin R coated on a 96-well plate. Standards and samples are pipetted into the wells and Prolactin R present in a sample is bound to the wells by the immobilized antibody. The wells are washed and biotinylated anti-rat Prolactin R antibody is added. After washing away unbound biotinylated antibody, HRP conjugated streptavidin is pipetted to the wells. The wells are again washed, a TMB substrate solution is added to the wells and color develops in proportion to the amount of Prolactin R bound. The Stop Solution changes the color from blue to yellow, and the intensity of the color is measured at 450 nm.

We have not been able to detect the endogenous Rat Prolactin R in normal serum with ab113351, only in serum spiked with Rat Prolactin R.

说明 **Note:** very low signal were obtained in normal plasma.

平台 Microplate

性能

存放说明

Store at -20°C. Please refer to protocols.

组件	1 x 96 tests
20X Wash Buffer	1 x 25ml
400X HRP-Streptavidin Concentrate	1 x 200µl
5X Assay Diluent B	1 x 15ml
5X Assay Diluent D	1 x 15ml
Biotinylated anti-rat Prolactin R	2 vials
Prolactin R Microplate (12 x 8 wells)	1 unit
Recombinant rat Prolactin R Standard (lyophilized)	2 vials
Stop Solution	1 x 8ml
TMB One-Step Substrate Reagent	1 x 12ml

功能

This is a receptor for the anterior pituitary hormone prolactin (PRL). Isoform 4 is unable to transduce prolactin signaling. Isoform 6 is unable to transduce prolactin signaling.

组织特异性

Expressed in breast, placenta, kidney, liver and pancreas.

序列相似性

Belongs to the type I cytokine receptor family. Type 1 subfamily.
Contains 2 fibronectin type-III domains.

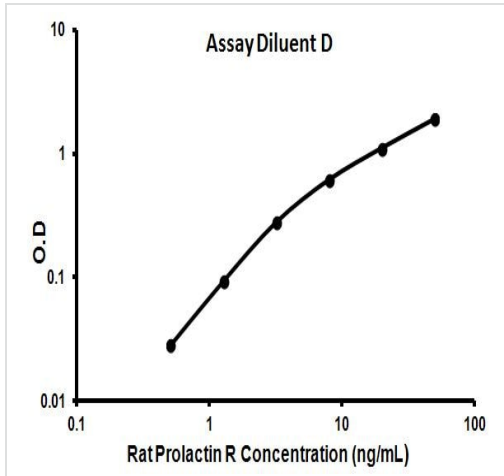
结构域

The WSXWS motif appears to be necessary for proper protein folding and thereby efficient intracellular transport and cell-surface receptor binding.
The box 1 motif is required for JAK interaction and/or activation.

细胞定位

Secreted and Membrane.

图片



Representative standard curve using ab113351

Typical data

Please note: All products are "FOR RESEARCH USE ONLY. NOT FOR USE IN DIAGNOSTIC PROCEDURES"

Our Abpromise to you: Quality guaranteed and expert technical support

- Replacement or refund for products not performing as stated on the datasheet
- Valid for 12 months from date of delivery
- Response to your inquiry within 24 hours
- We provide support in Chinese, English, French, German, Japanese and Spanish
- Extensive multi-media technical resources to help you
- We investigate all quality concerns to ensure our products perform to the highest standards

If the product does not perform as described on this datasheet, we will offer a refund or replacement. For full details of the Abpromise, please visit <https://www.abcam.cn/abpromise> or contact our technical team.

Terms and conditions

- Guarantee only valid for products bought direct from Abcam or one of our authorized distributors