

Rat ANP ELISA Kit (NPPA) ab108797

★★★★★ [1 Abreviews](#) [11 References](#) [2 图像](#)

概述

产品名称	大鼠ANP ELISA试剂盒(NPPA)			
检测方法	Colorimetric			
精确度	批次内			
	样品	n	Mean	SD
	Overall			6.3%
	批次间			
	样品	n	Mean	SD
	Overall			10.7%
样品类型	Cell culture supernatant, Serum, Plasma, Tissue			
检测类型	Sandwich (quantitative)			
灵敏度	= 6.1 pg/ml			
范围	0.008 ng/ml - 2 ng/ml			
回收率	102 %			
检测时间	5h 00m			
实验步骤	Multiple steps standard assay			
种属反应性	与反应: Rat 预测可用于: Pig 			
产品概述	Abcam's ANP (NPPA) Rat <i>in vitro</i> ELISA (Enzyme-Linked Immunosorbent Assay) kit is designed for the quantitative measurement of ANP concentrations in cell culture supernatants, tissue-extract, serum and plasma.			

An ANP specific antibody has been precoated onto 96-well plates and blocked. Standards or test samples are added to the wells and subsequently an ANP specific biotinylated detection antibody is added and then followed by washing with wash buffer. Streptavidin-Peroxidase Conjugate is added and unbound conjugates are washed away with wash buffer. TMB is then used to visualize Streptavidin-Peroxidase enzymatic reaction. TMB is catalyzed by Streptavidin-Peroxidase to produce a blue color product that changes into yellow after adding acidic stop solution. The

density of yellow coloration is directly proportional to the amount of ANP captured in plate.

The entire kit may be stored at -20°C for long term storage before reconstitution - Avoid repeated freeze-thaw cycles.

平台 Microplate

性能

存放说明 Store at -20°C. Please refer to protocols.

组件	1 x 96 tests
100X Streptavidin-Peroxidase Conjugate	1 x 80µl
10X Diluent N Concentrate	1 x 30ml
20X Wash Buffer Concentrate	2 x 30ml
40X Biotinylated Rat ANP Antibody	1 x 150µl
ANP Microplate (12 x 8 well strips)	1 unit
ANP Standard	1 vial
Chromogen Substrate	1 x 7ml
Sealing Tapes	3 units
Stop Solution	1 x 11ml

功能 Hormone playing a key role in cardiovascular homeostasis through regulation of natriuresis, diuresis, and vasodilation. Also plays a role in female pregnancy by promoting trophoblast invasion and spiral artery remodeling in uterus. Specifically binds and stimulates the cGMP production of the NPR1 receptor. Binds the clearance receptor NPR3.

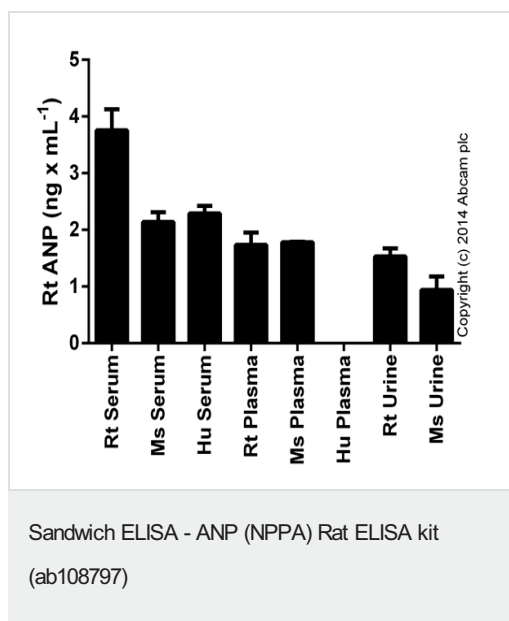
疾病相关 Atrial standstill 2
Atrial fibrillation, familial, 6

序列相似性 Belongs to the natriuretic peptide family.

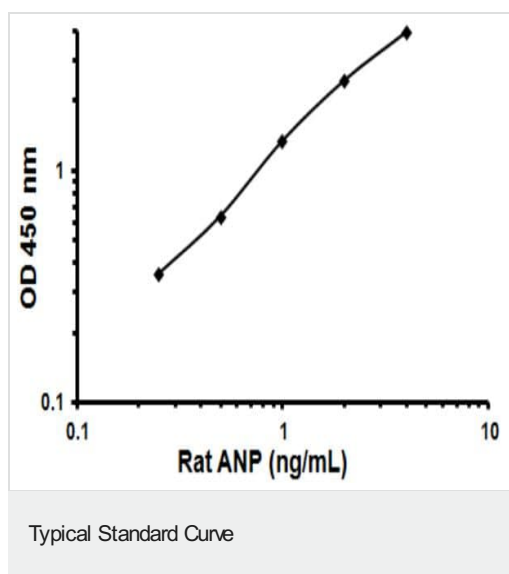
翻译后修饰 Cleaved by CORIN upon secretion to produce the functional hormone.
Atrial natriuretic factor: Cleaved by MME. The cleavage initiates degradation of the factor and thereby regulate its activity.

细胞定位 Secreted.

图片



Rat ANP measured in biological fluids, background signal subtracted (duplicates +/- SD).



Representative Standard Curve using ab108797.

Please note: All products are "FOR RESEARCH USE ONLY. NOT FOR USE IN DIAGNOSTIC PROCEDURES"

Our Abpromise to you: Quality guaranteed and expert technical support

- Replacement or refund for products not performing as stated on the datasheet
- Valid for 12 months from date of delivery
- Response to your inquiry within 24 hours
- We provide support in Chinese, English, French, German, Japanese and Spanish
- Extensive multi-media technical resources to help you
- We investigate all quality concerns to ensure our products perform to the highest standards

If the product does not perform as described on this datasheet, we will offer a refund or replacement. For full details of the Abpromise, please visit <https://www.abcam.cn/abpromise> or contact our technical team.

Terms and conditions

- Guarantee only valid for products bought direct from Abcam or one of our authorized distributors