

Rat Albumin ELISA Kit ab235642

重组 SimpleStep ELISA

3 References [5 图像](#)

概述

产品名称 大鼠Albumin ELISA试剂盒

检测方法 Colorimetric

精确度 批次内

| 样品 | n | Mean | SD | CV% |
|-------|---|------|----|------|
| Serum | 9 | | | 3.7% |

批次间

| 样品 | n | Mean | SD | CV% |
|-------|---|------|----|------|
| Serum | 3 | | | 3.3% |

样品类型 Urine, Serum, Hep Plasma, EDTA Plasma, Cit plasma

检测类型 Sandwich (quantitative)

灵敏度 94.64 pg/ml

范围 312.5 pg/ml - 20000 pg/ml

回收率 特定样本回收率

| 样品类型 | 平均% | 范围 |
|-------------|-----|-------------|
| Urine | 113 | 111% - 116% |
| Serum | 109 | 108% - 111% |
| Hep Plasma | 104 | 102% - 106% |
| EDTA Plasma | 107 | 106% - 108% |
| Cit plasma | 113 | 108% - 117% |

检测时间 1h 30m

实验步骤 One step assay

种属反应性**与反应:** Rat**不与反应:** Cow, Rhesus monkey**产品概述**

Rat Albumin ELISA Kit (ab235642) is a single-wash 90 min sandwich ELISA designed for the quantitative measurement of Albumin protein in cit plasma, edta plasma, hep plasma, serum, and urine. It uses our proprietary SimpleStep ELISA® technology. Quantitate Rat Albumin with 94.64 pg/ml sensitivity.

SimpleStep ELISA® technology employs capture antibodies conjugated to an affinity tag that is recognized by the monoclonal antibody used to coat our SimpleStep ELISA® plates. This approach to sandwich ELISA allows the formation of the antibody-analyte sandwich complex in a single step, significantly reducing assay time. See the SimpleStep ELISA® protocol summary in the image section for further details. Our SimpleStep ELISA® technology provides several benefits:

- Single-wash protocol reduces assay time to 90 minutes or less
- High sensitivity, specificity and reproducibility from superior antibodies
- Fully validated in biological samples
- 96-wells plate breakable into 12 x 8 wells strips

A 384-well SimpleStep ELISA® microplate (**ab203359**) is available to use as an alternative to the 96-well microplate provided with SimpleStep ELISA® kits.

平台

Pre-coated microplate (12 x 8 well strips)

性能**存放说明**

Store at +4°C. Please refer to protocols.

| 组件 | 1 x 96 tests | 10 x 96 tests |
|-----------------------------------------------------|--------------|---------------|
| 10X Rat Albumin Capture Antibody | 1 x 600µl | 1 x 6000µl |
| 10X Rat Albumin Detector Antibody | 1 x 600µl | 1 x 6000µl |
| 10X Wash Buffer PT (ab206977) | 1 x 20ml | 1 x 200ml |
| Antibody Diluent 5BR | 1 x 6ml | 10 x 6ml |
| Plate Seals | 1 unit | 1 x 10 units |
| Rat Albumin Lyophilized Recombinant Protein | 2 vials | 2 x 10 vials |
| Sample Diluent NS (ab193972) | 1 x 50ml | 2 x 250ml |
| SimpleStep Pre-Coated 96-Well Microplate (ab206978) | 1 unit | 1 x 10 units |
| Stop Solution | 1 x 12ml | 1 x 120ml |
| TMB Development Solution | 1 x 12ml | 1 x 120ml |

功能

Serum albumin, the main protein of plasma, has a good binding capacity for water, Ca(2+), Na(+),

K(+), fatty acids, hormones, bilirubin and drugs. Its main function is the regulation of the colloidal osmotic pressure of blood. Major zinc transporter in plasma, typically binds about 80% of all plasma zinc.

组织特异性

Plasma.

疾病相关

Defects in ALB are a cause of familial dysalbuminemic hyperthyroxinemia (FDH) [MIM:103600]. FDH is a form of euthyroid hyperthyroxinemia that is due to increased affinity of ALB for T(4). It is the most common cause of inherited euthyroid hyperthyroxinemia in Caucasian population.

序列相似性

Belongs to the ALB/AFP/VDB family.
Contains 3 albumin domains.

翻译后修饰

Kenitra variant is partially O-glycosylated at Thr-620. It has two new disulfide bonds Cys-600 to Cys-602 and Cys-601 to Cys-606.

Glycated in diabetic patients.

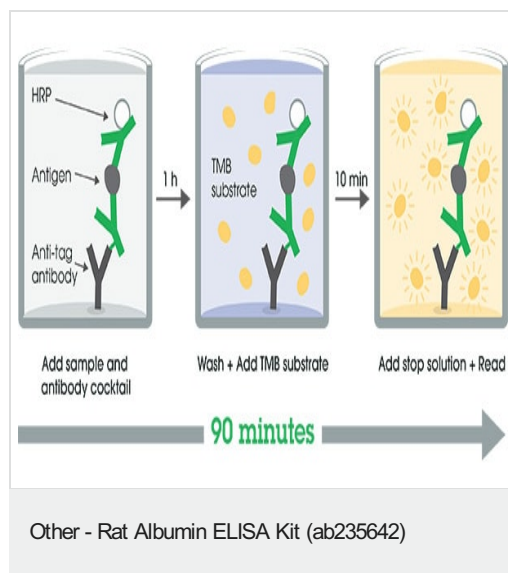
Phosphorylation sites are present in the extracellular medium.

Acetylated on Lys-223 by acetylsalicylic acid.

细胞定位

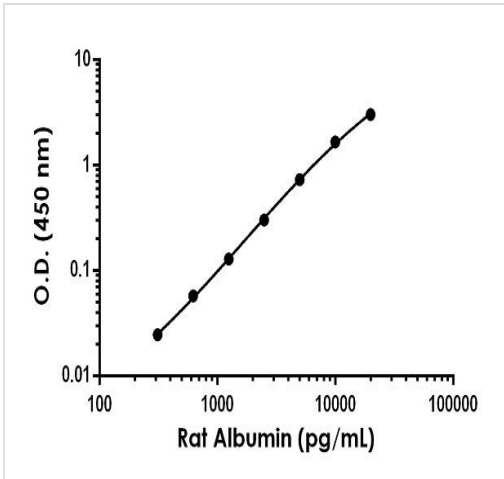
Secreted.

图片



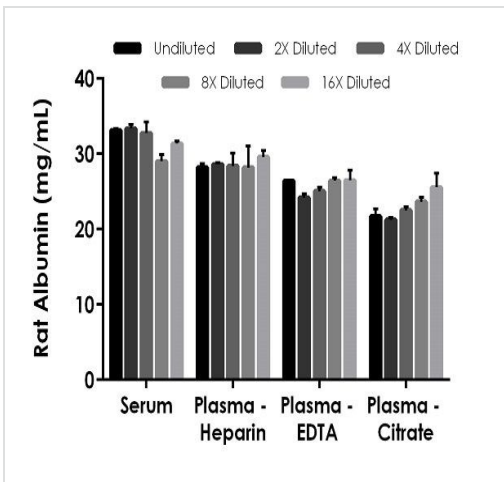
SimpleStep ELISA technology allows the formation of the antibody-antigen complex in one single step, reducing assay time to 90 minutes. Add samples or standards and antibody mix to wells all at once, incubate, wash, and add your final substrate. See protocol for a detailed step-by-step guide.

Other - Rat Albumin ELISA Kit (ab235642)



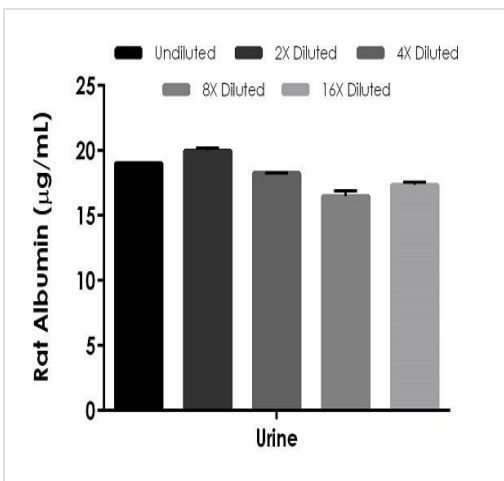
Example of rat Albumin standard curve in Sample Diluent NS.

The Albumin standard curve was prepared as described in Section 10. Raw data values are shown in the table. Background-subtracted data values (mean +/- SD) are graphed.



Interpolated concentrations of native Albumin in rat serum and plasma samples.

The concentrations of Albumin were measured in duplicates, interpolated from the Albumin standard curves and corrected for sample dilution. Undiluted samples are as follows: serum 1:2 million, plasma (heparin) 1:8 million, plasma (EDTA) 1:4 million, and plasma (citrate) 1:4 million. The interpolated dilution factor corrected values are plotted (mean +/- SD, n=2). The mean Albumin concentration in the neat samples was determined to be 32 mg/mL in serum, 29 mg/mL in plasma (heparin), 26 mg/mL in plasma (EDTA), and 23 mg/mL in plasma (citrate).



Interpolated concentrations of native Albumin in rat urine.

The concentrations of Albumin were measured in duplicate and interpolated from the Albumin standard curve and corrected for sample dilution. Undiluted samples are 1:1,000. The interpolated dilution factor corrected values are plotted (mean +/- SD, n=2). The mean Albumin concentration in the neat sample was determined to be 18 µg/mL.

Powered by
recombinant antibodies



Research with confidence
Consistent and reproducible results



Long-term and scalable supply
Recombinant technology



Success from the first experiment
Confirmed specificity



Ethical standards compliant
Animal-free production

Sandwich ELISA - Rat Albumin ELISA Kit
(ab235642)

To learn more about the advantages of recombinant antibodies see [here](#).

Please note: All products are "FOR RESEARCH USE ONLY. NOT FOR USE IN DIAGNOSTIC PROCEDURES"

Our Abpromise to you: Quality guaranteed and expert technical support

- Replacement or refund for products not performing as stated on the datasheet
- Valid for 12 months from date of delivery
- Response to your inquiry within 24 hours
- We provide support in Chinese, English, French, German, Japanese and Spanish
- Extensive multi-media technical resources to help you
- We investigate all quality concerns to ensure our products perform to the highest standards

If the product does not perform as described on this datasheet, we will offer a refund or replacement. For full details of the Abpromise, please visit <https://www.abcam.cn/abpromise> or contact our technical team.

Terms and conditions

- Guarantee only valid for products bought direct from Abcam or one of our authorized distributors