

Rat Albumin ELISA Kit ab108789

18 References 3 图像

概述

产品名称	大鼠Albumin ELISA试剂盒			
检测方法	Colorimetric			
精确度	批次内			
	样品	n	Mean	SD
	Overall			5.4%
	批次间			
	样品	n	Mean	SD
	Overall			10.6%
样品类型	Urine, Serum, Plasma			
检测类型	Sandwich (quantitative)			
灵敏度	0.39 ng/ml			
范围	0.781 ng/ml - 200 ng/ml			
回收率	97 %			
检测时间	3h 00m			
实验步骤	Multiple steps standard assay			
种属反应性	与反应: Rat			
产品概述	Rat Albumin <i>in vitro</i> ELISA (Enzyme-Linked Immunosorbent Assay) kit is designed for the quantitative measurement of Albumin in plasma, serum and urine sample.			

An Albumin specific antibody has been precoated onto 96-well plates and blocked. Standards or test samples are added to the wells and subsequently an Albumin specific biotinylated detection antibody is added and then followed by washing with wash buffer. Streptavidin-Peroxidase Conjugate is added and unbound conjugates are washed away with wash buffer. TMB is then used to visualize Streptavidin-Peroxidase enzymatic reaction. TMB is catalyzed by Streptavidin-Peroxidase to produce a blue color product that changes into yellow after adding acidic stop solution. The density of yellow coloration is directly proportional to the amount of Albumin captured in plate.

The entire kit may be stored at -20°C for long term storage before reconstitution - Avoid repeated freeze-thaw cycles.

平台 Microplate

性能

存放说明 Store at -20°C. Please refer to protocols.

组 件	1 x 96 tests
100X Streptavidin-Peroxidase Conjugate	1 x 80µl
10X Diluent N Concentrate	1 x 30ml
20X Wash Buffer Concentrate	2 x 30ml
50X Biotinylated Rat Albumin Antibody	1 x 120µl
Albumin Microplate (12 x 8 well strips)	1 unit
Albumin Standard	1 vial
Chromogen Substrate	1 x 7ml
Sealing Tapes	3 units
Stop Solution	1 x 11ml

功能 Serum albumin, the main protein of plasma, has a good binding capacity for water, Ca(2+), Na(+), K(+), fatty acids, hormones, bilirubin and drugs. Its main function is the regulation of the colloidal osmotic pressure of blood. Major zinc transporter in plasma, typically binds about 80% of all plasma zinc.

组织特异性 Plasma.

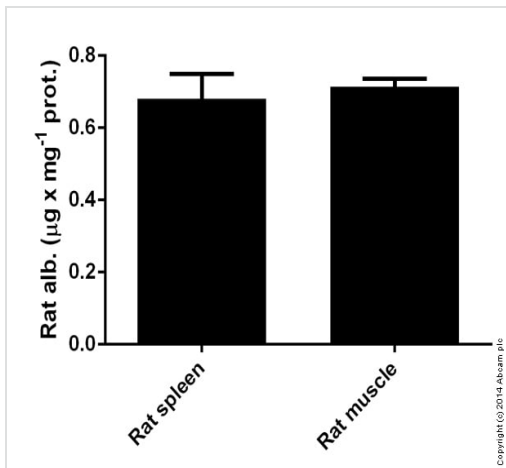
疾病相关 Defects in ALB are a cause of familial dysalbuminemic hyperthyroxinemia (FDH) [MIM:103600]. FDH is a form of euthyroid hyperthyroxinemia that is due to increased affinity of ALB for T(4). It is the most common cause of inherited euthyroid hyperthyroxinemia in Caucasian population.

序列相似性 Belongs to the ALB/AFP/VDB family.
Contains 3 albumin domains.

翻译后修饰 Kenitra variant is partially O-glycosylated at Thr-620. It has two new disulfide bonds Cys-600 to Cys-602 and Cys-601 to Cys-606.
Glycated in diabetic patients.
Phosphorylation sites are present in the extracellular medium.
Acetylated on Lys-223 by acetylsalicylic acid.

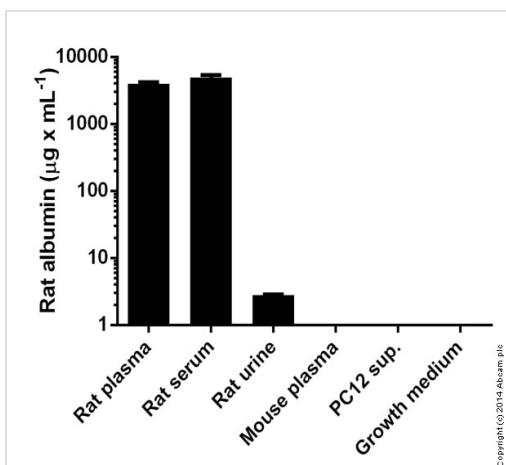
细胞定位 Secreted.

图片



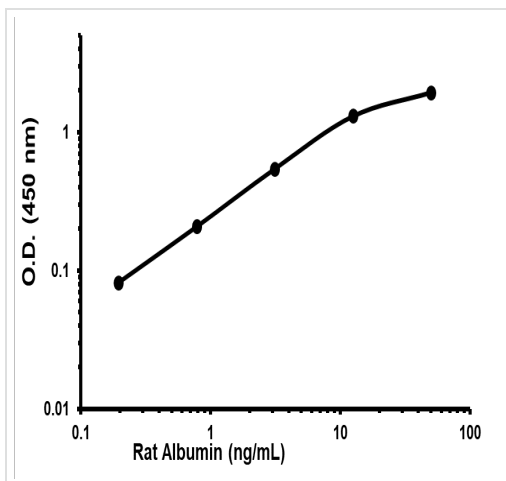
Rat albumin measured in tissue lysates showing quantity (microgram) per mg protein

Sandwich ELISA - ab108789 Albumin Rat ELISA kit



Rat albumin measured in various samples showing quantity (microgram) per mL of tested sample

Sandwich ELISA - ab108789 Albumin Rat ELISA kit



Representative Standard Curve using ab108789.

Typical Standard Curve

Please note: All products are "FOR RESEARCH USE ONLY. NOT FOR USE IN DIAGNOSTIC PROCEDURES"

Our Abpromise to you: Quality guaranteed and expert technical support

- Replacement or refund for products not performing as stated on the datasheet
- Valid for 12 months from date of delivery
- Response to your inquiry within 24 hours

- We provide support in Chinese, English, French, German, Japanese and Spanish
- Extensive multi-media technical resources to help you
- We investigate all quality concerns to ensure our products perform to the highest standards

If the product does not perform as described on this datasheet, we will offer a refund or replacement. For full details of the Abpromise, please visit <https://www.abcam.cn/abpromise> or contact our technical team.

Terms and conditions

- Guarantee only valid for products bought direct from Abcam or one of our authorized distributors